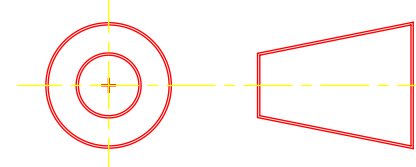
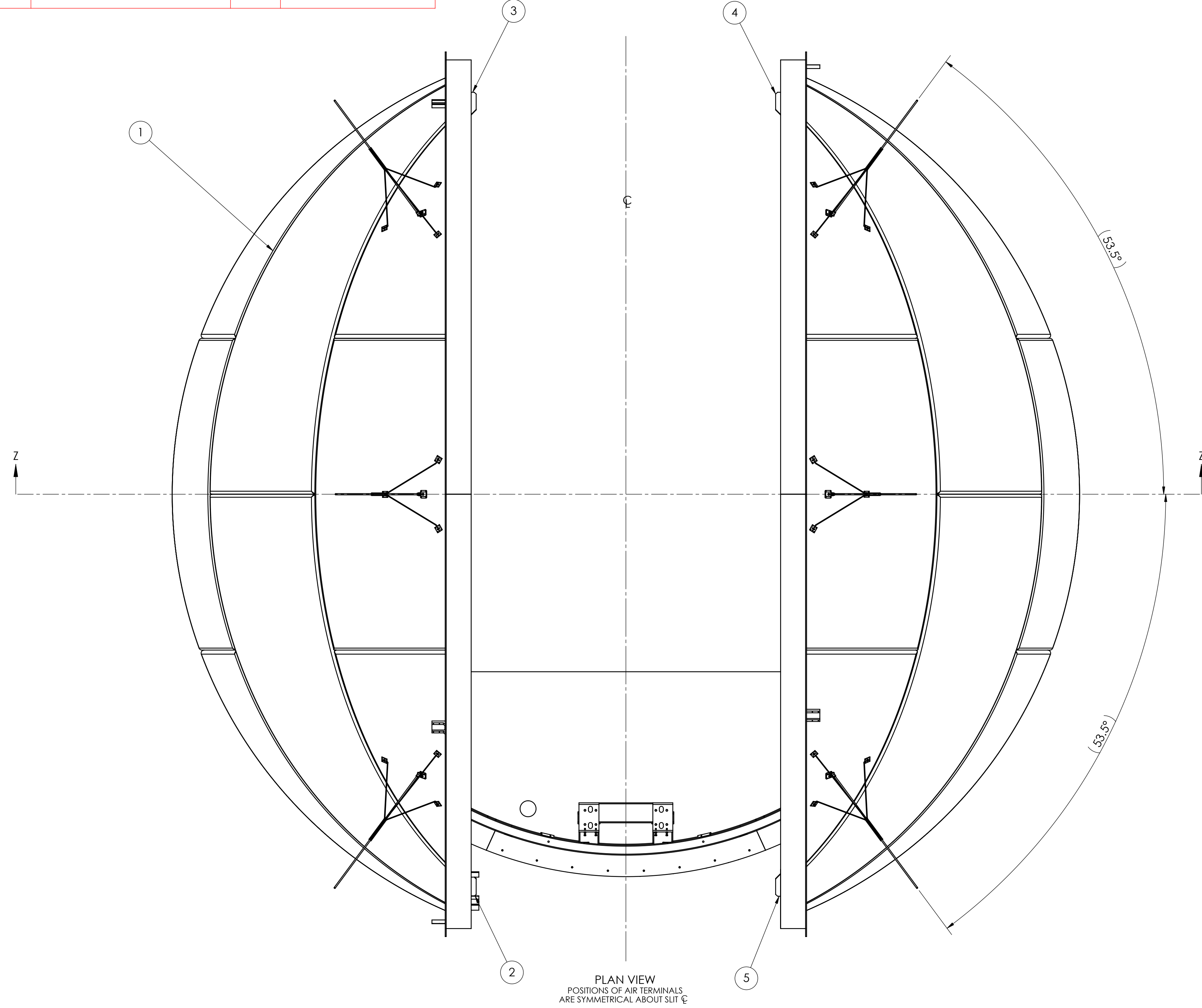


DO NOT SCALE

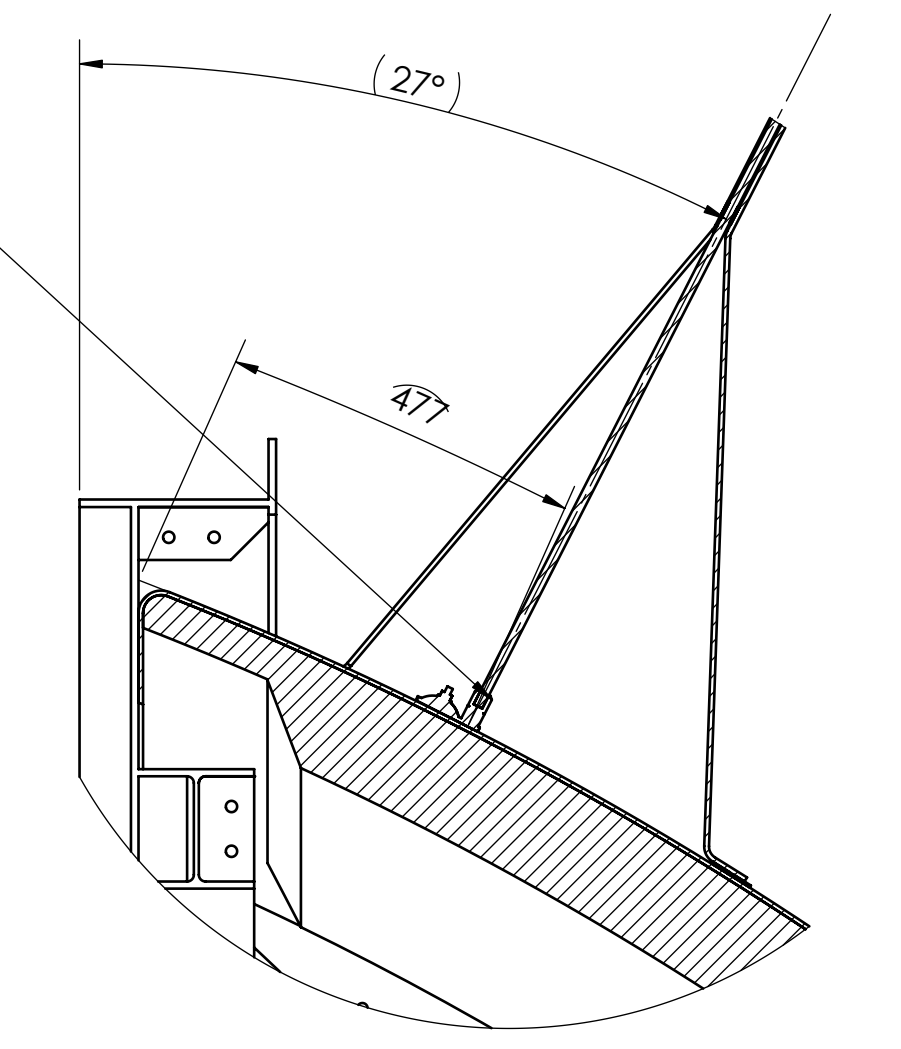


ISSUE	DATE	DESCRIPTION	CHECKED	APPROVED	ZONE
1		FIRST ISSUE			

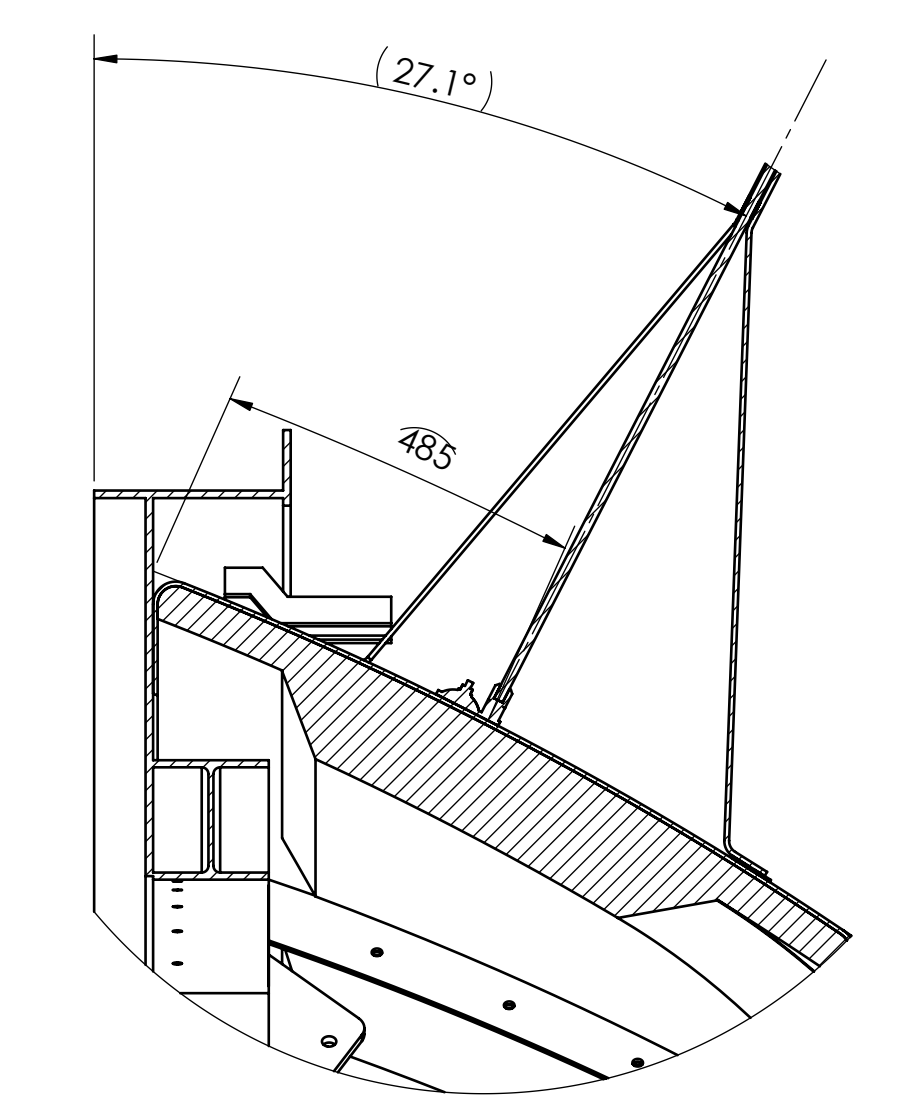
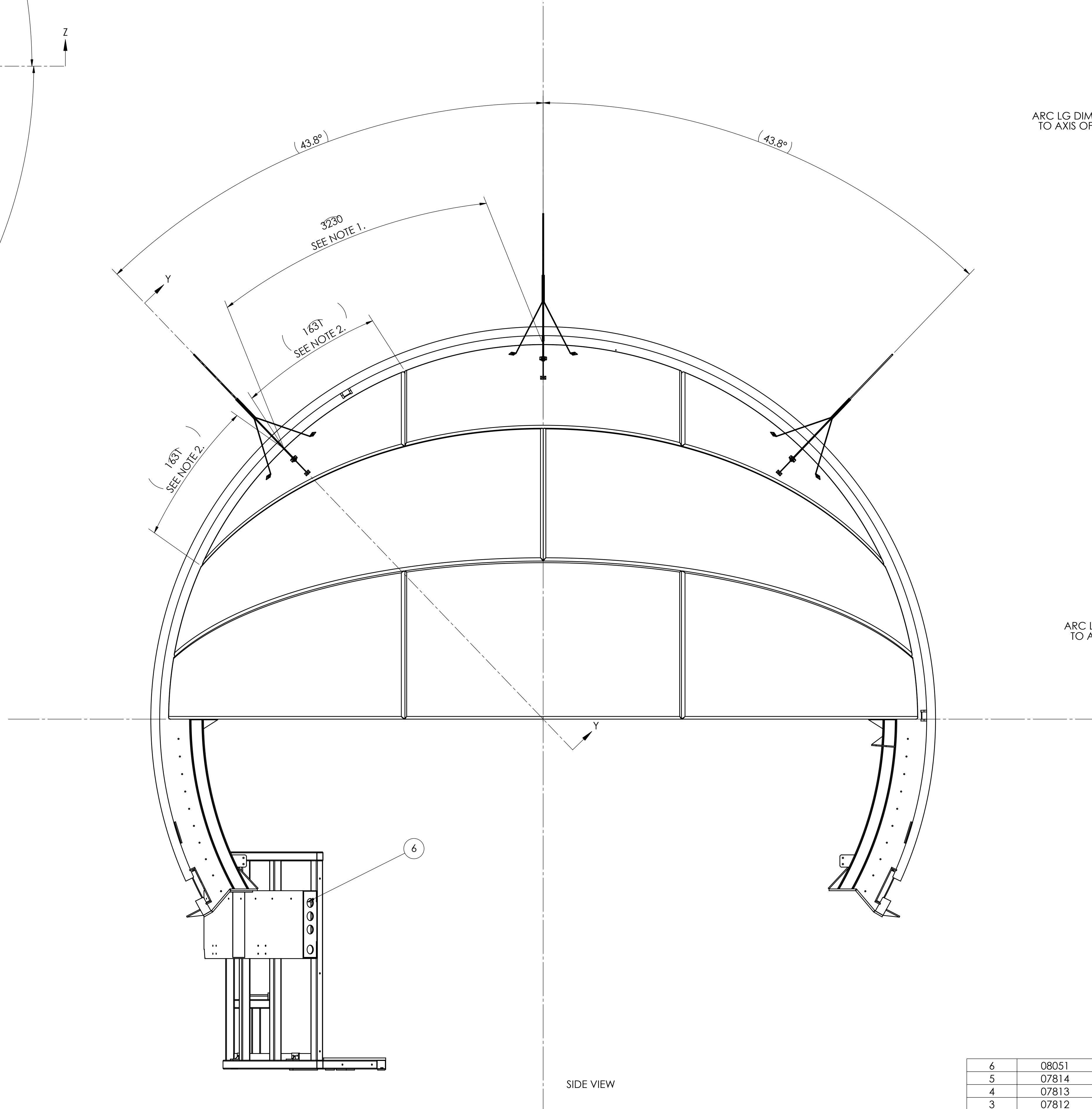


- NOTES:
- ARC LG DIM ON OUTSIDE SURFACE OF FRP PANEL ALONG ARCHBEAM, FROM TOP OF ARCHBEAM TO SECTION Y-Y PLANE.
 - APPROXIMATE ARC LG DIM ON OUTSIDE SURFACE OF FRP PANEL ALONG ARCHBEAM, FROM JUNCTION OF ADJOINING PANEL TO SECTION Y-Y PLANE.
 - FOR CLARITY, ONLY ARCHBEAMS & FRP HEMISPHERE PANELS SHOWN.

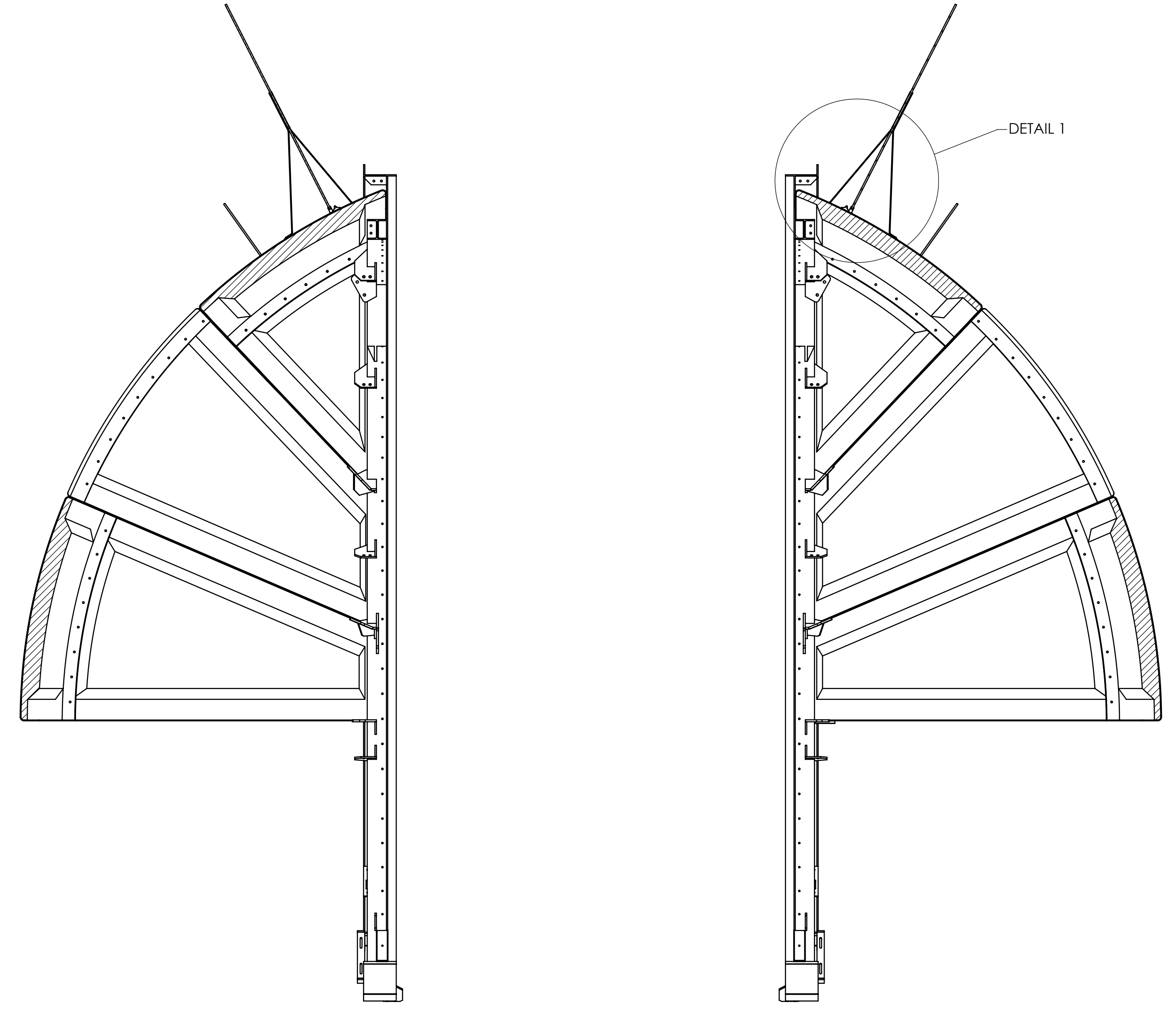
HARGER SWIVEL TRIPOD AND SWIVEL BASE
 6 PLACES TYP



DETAIL 1 - SCALE 1 : 10
 ARC LG DIM ALONG OUTSIDE SURFACE OF FRP PANEL
 TO AXIS OF AIR TERMINAL, NORMAL TO ARCHBEAM



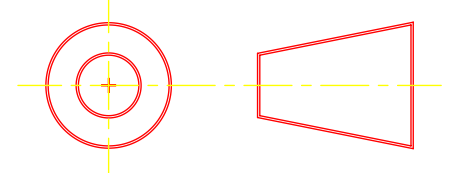
DETAIL 2 - SCALE 1 : 10
 ROTATED PARTIAL SECTION Y-Y
 ARC LG DIM ALONG OUTSIDE SURFACE OF FRP PANEL
 TO AXIS OF AIR TERMINAL, NORMAL TO ARCHBEAM



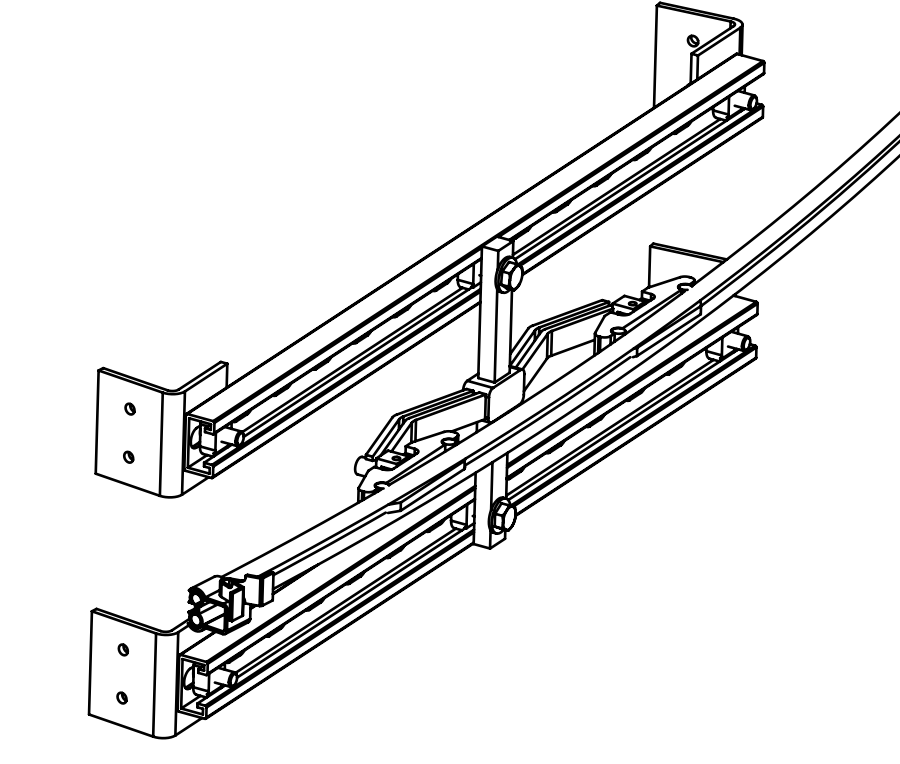
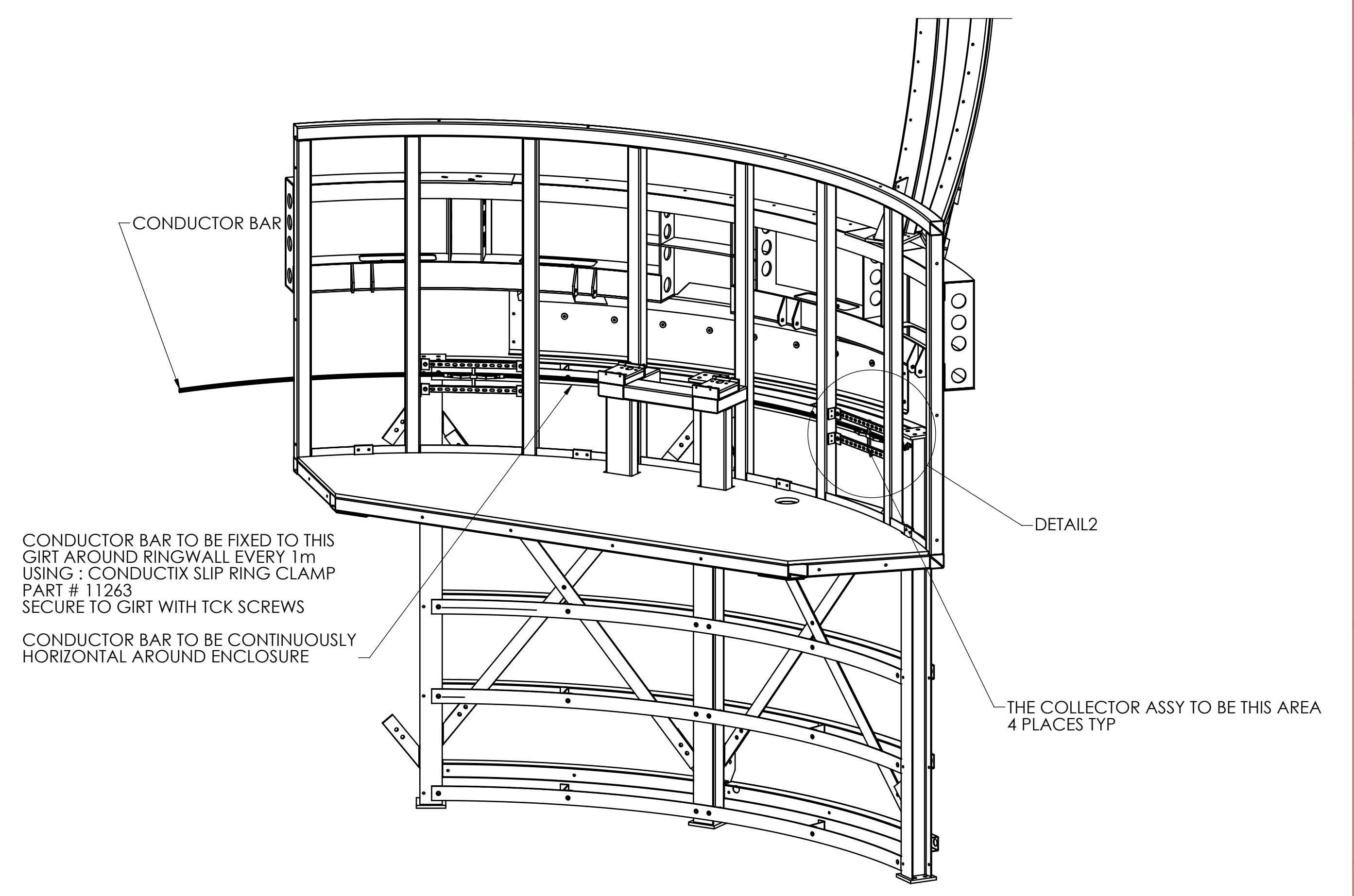
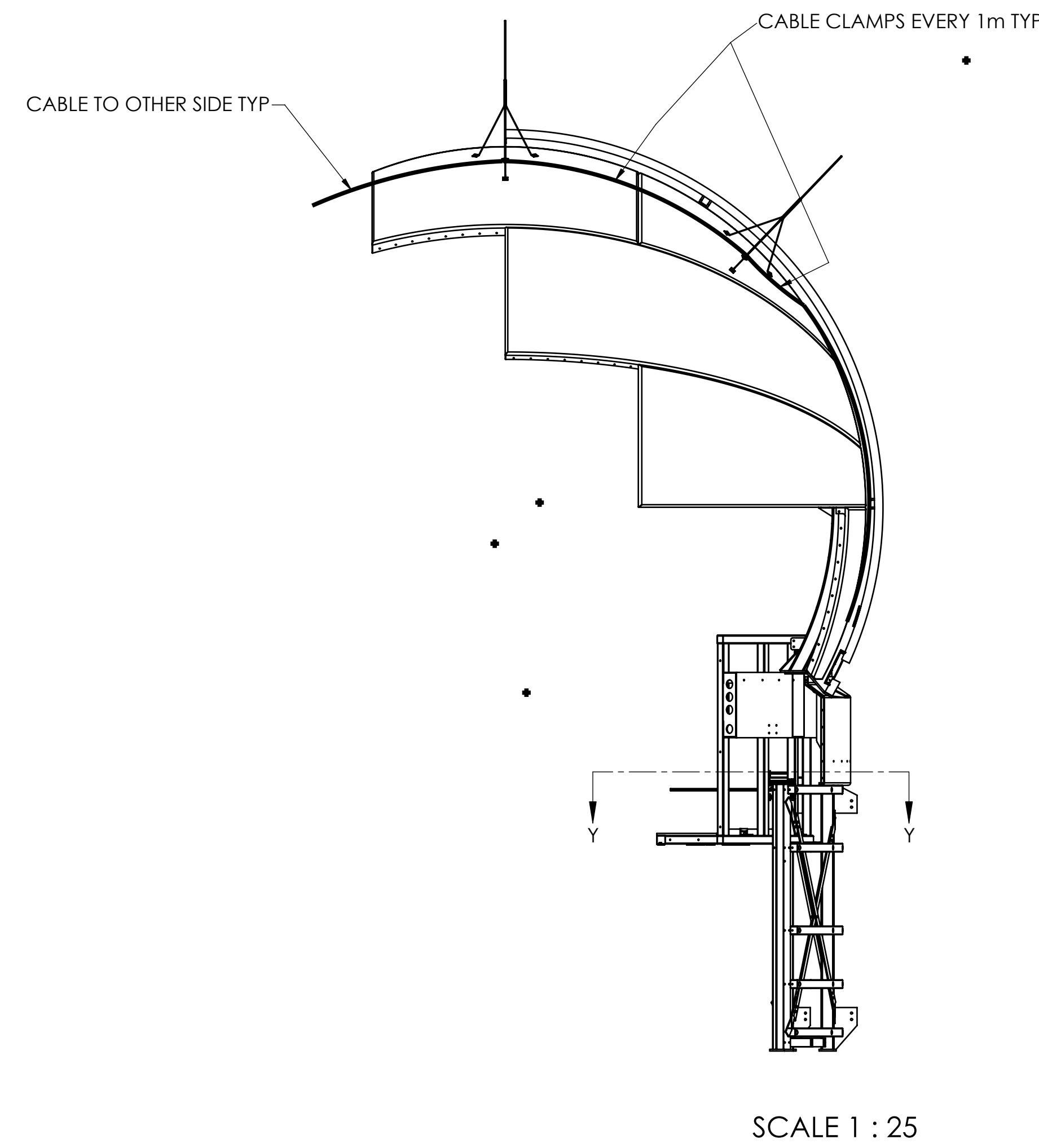
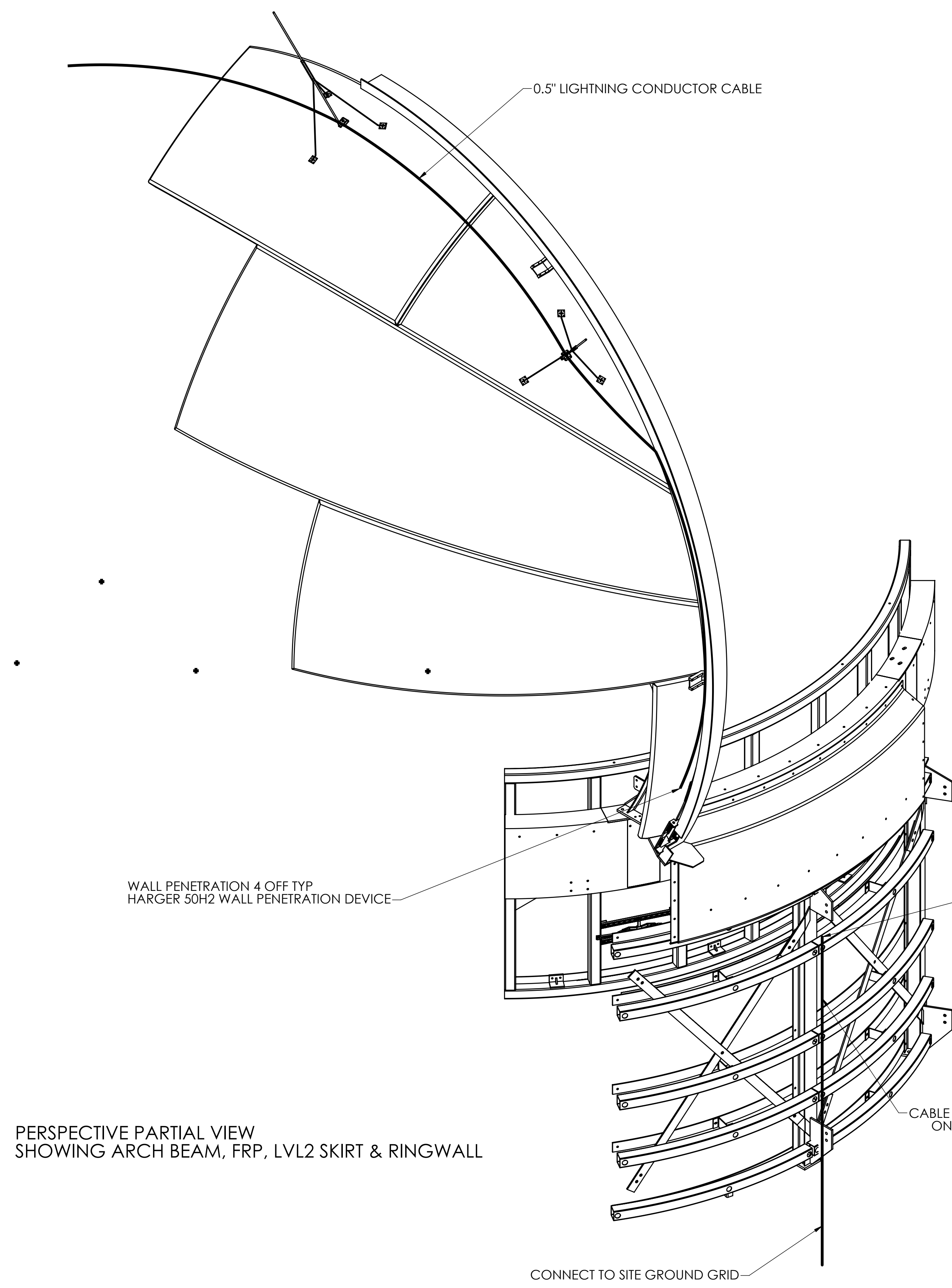
ITEM NO.	PART NUMBER	DESCRIPTION	MASS
6	08051	LEVEL 2 QUADRANT - DRIVE SECTION ASSEMBLY (IS2)	1421 Kg
5	07814	ARCH BEAM - TYPE D (IS2)	936 kg
4	07813	ARCH BEAM - TYPE C (IS2)	955 kg
3	07812	ARCH BEAM - TYPE B (IS2)	944 kg
2	07811	ARCH BEAM - TYPE A (IS2)	944 kg
1	07717	FIXED CLADDING ASSEMBLY (IS2)	15185 Kg

<p>MATERIAL: AS PER COMPONENT</p> <p>MASS: N/A</p> <p>COPYRIGHT THIS DOCUMENT AND ENCLOSED INFORMATION REMAINS THE PROPERTY OF ELECTRO OPTIC SYSTEMS P/L. INFORMATION HEREIN MAY NOT BE COPIED NOR DISCLOSED WITHOUT WRITTEN CONSENT OF EOS P/L MANAGEMENT</p>	<p>GENERAL NOTES: ALL REFERENCES AND SYMBOLS IN ACCORDANCE WITH DEF(AUST)S085. ALL DIMENSIONS APPLY TO FINISHED ITEMS ALL DIMENSIONS IN MILLIMETRES TOLERANCES: ALL TOLERANCES ARE TO BE WITHIN THE LIMITS SPECIFIED HERE UNLESS NOTED OTHERWISE ON THE DRAWING GENERAL = ± 2mm HOLES = ± 0.5mm ANGULAR = ± 0.5°</p>	<p>ALL WELDS TO COMPLY WITH AS/NZS1554.1:2000 BREAK ALL SHARP EDGES INDICATED MACHINED SURFACES ✓ FINISHES: AS PER COMPONENT</p>	DRAWN D.H. DATE 25-Jul-06	EOS SPACE SYSTEMS PTY.LTD. A.B.N. 25 100 248 253 111 CANBERRA AVENUE GRIFFITH, A.C.T. 2603, PH: 02 62227900				
			DESIGN/CHECK T.P. DATE 25-Jul-06	TITLE IS2 LIGHTNING PROTECTION TERMINAL LOCATION				
			APPROVED A.S. DATE 3-Aug-06	DCCM/CAGE GAD	PREFIX GAD	DRAWING NO 500952	ISSUE 01	SHEET SIZE A0
			CONFIGURED K.B. DATE	SCALE 1:25	SHEET 1 OF 2			

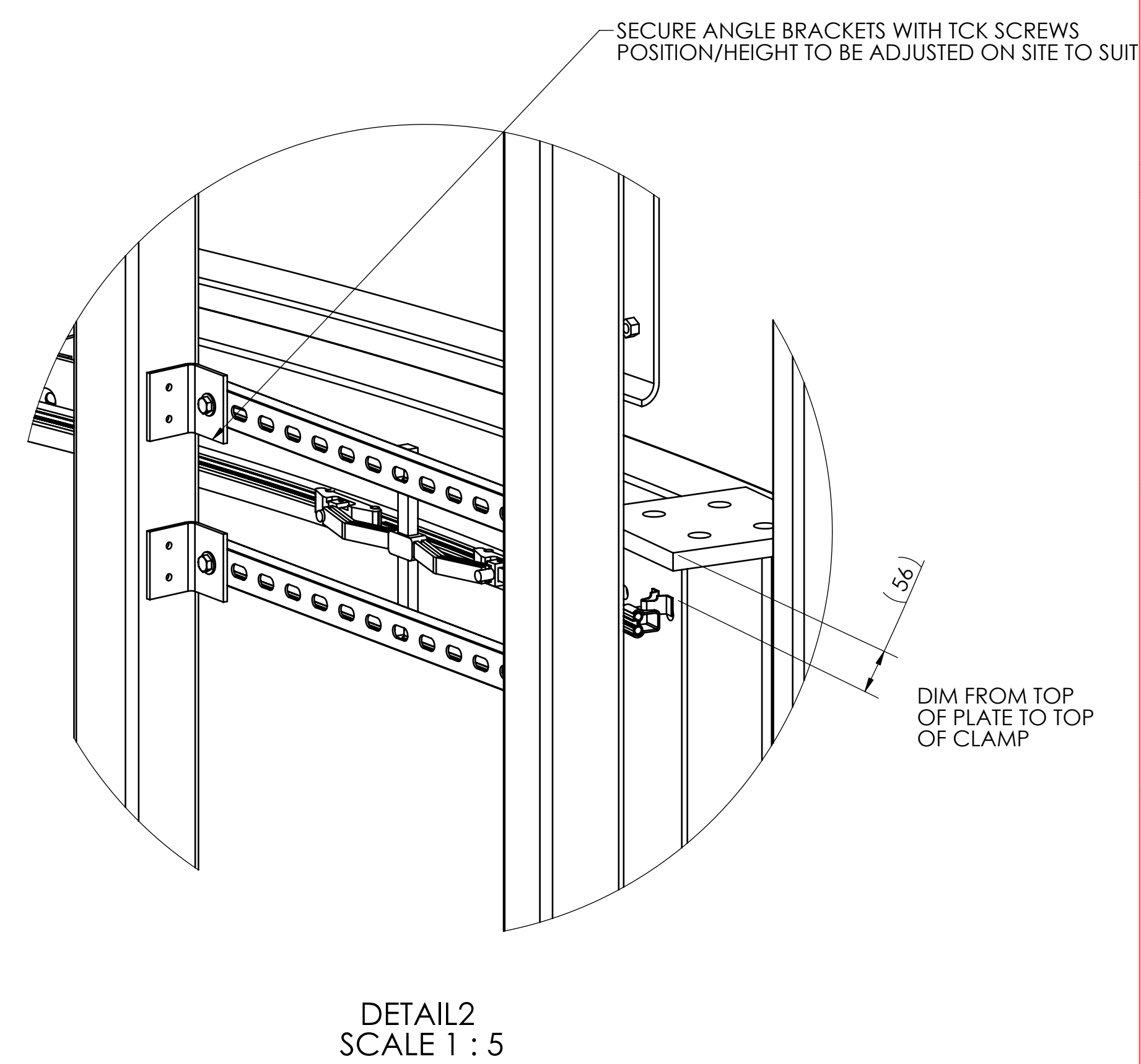
DO NOT SCALE



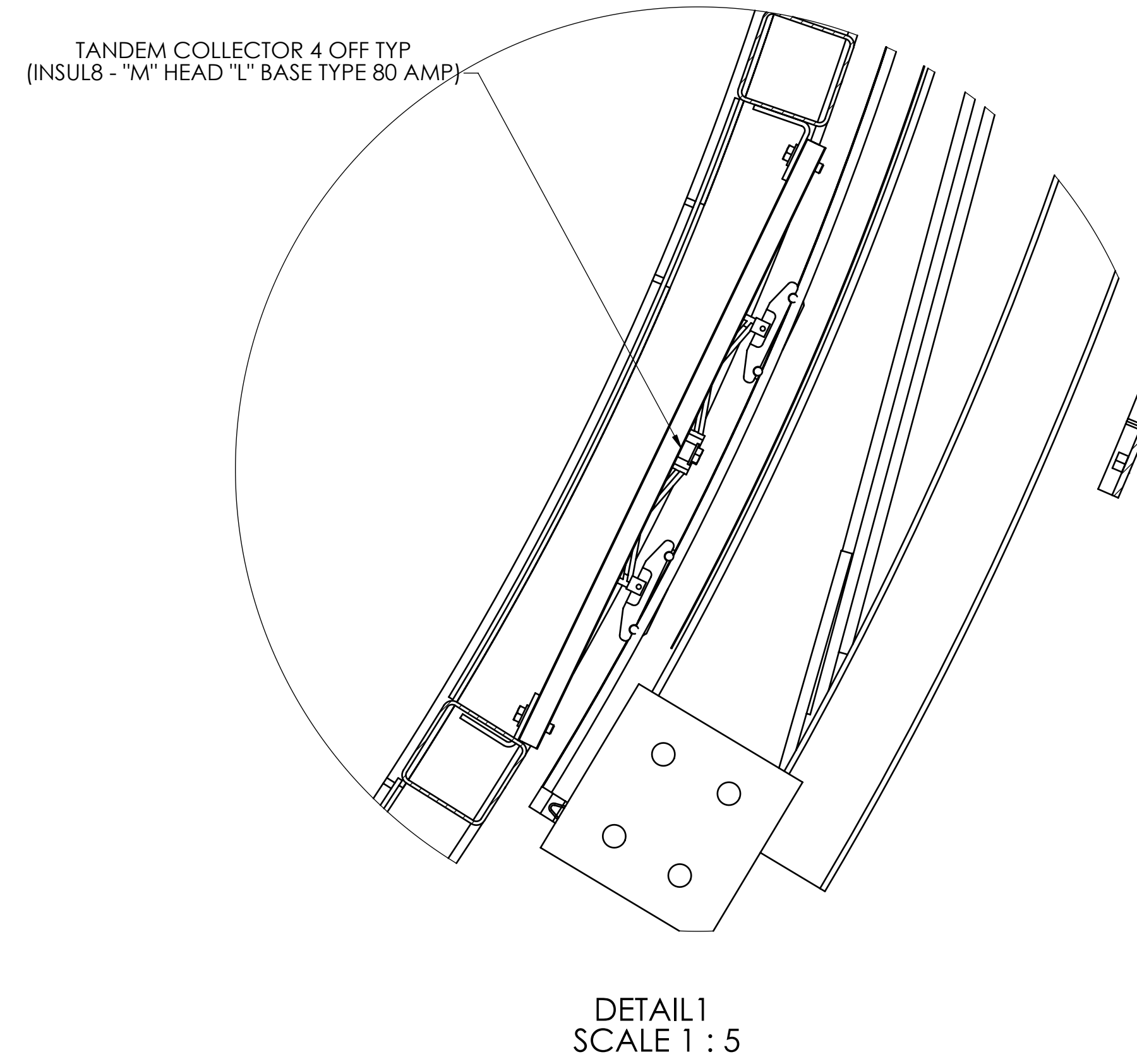
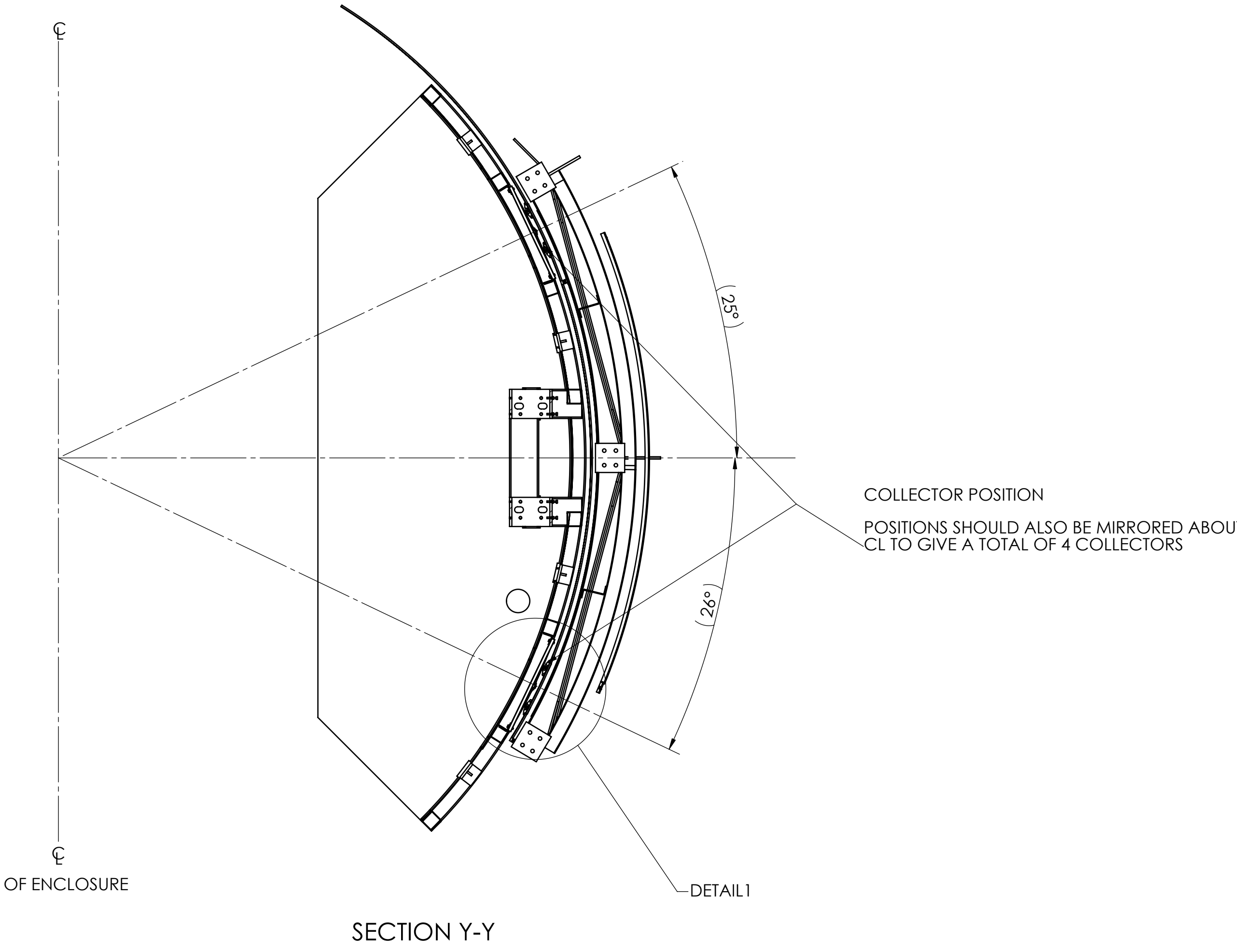
ISSUE	DATE	DESCRIPTION	CHECKED	APPROVED	ZONE
1		FIRST ISSUE			



PICTORIAL VIEW OF CONDUCTOR BAR/COLLECTOR ASSY REFER TO ASSEMBLY DRAWING AD-501109 FOR DETAILS



PERSPECTIVE PARTIAL VIEW SHOWING ARCH BEAM, FRP, LVL2 SKIRT & RINGWALL



- NOTE :
- 1: CABLE ROUTE DETAILS ARE TYPICAL FOR BOTH ARCHES, 4 PLACES
 - 2 : REFER TO SITE PLANS OR TECH SPEC FOR SPECIFIC LOCATIONS OF COLLECTORS & DOWN CABLES ON RINGWALL

<p>MATERIAL: AS PER COMPONENT</p> <p>MASS: N/A</p> <p>COPYRIGHT THIS DOCUMENT AND ENCLOSED INFORMATION REMAINS THE PROPERTY OF ELECTRO OPTIC SYSTEMS P/L INFORMATION HEREIN MAY NOT BE COPIED NOR DISCLOSED WITHOUT WRITTEN CONSENT OF EOS P/L MANAGEMENT</p>	<p>GENERAL NOTES: ALL REFERENCES AND SYMBOLS IN ACCORDANCE WITH DEF(AUST)5085. ALL DIMENSIONS APPLY TO FINISHED ITEMS ALL DIMENSIONS IN MILLIMETRES TOLERANCES: ALL TOLERANCES ARE TO BE WITHIN THE LIMITS SPECIFIED HERE UNLESS NOTED OTHERWISE ON THE DRAWING GENERAL = ± 2mm HOLES = ± 0.5mm ANGULAR = ± 0.5°</p>	<p>ALL WELDS TO COMPLY WITH AS/NZS1554.1:2000 BREAK ALL SHARP EDGES INDICATED MACHINED SURFACES ✓ FINISHES: AS PER COMPONENT</p>	<p>DRAWN</p> <p>D.H</p>	<p>DATE</p> <p>25-Jul-06</p>	<p>EOS SPACE SYSTEMS PTY.LTD. A.B.N. 25 100 248 253 111 CANBERRA AVENUE GRIFFITH, A.C.T. 2603, PH: 02 62227900</p>
			<p>DESIGN/CHECK</p> <p>T.P</p>	<p>DATE</p> <p>25-Jul-06</p>	
			<p>APPROVED</p> <p>A.S</p>	<p>DATE</p> <p>3-Aug-06</p>	<p>DCCM/CAGE</p> <p>GAD</p>
			<p>CONFIGURED</p> <p>K.B</p>	<p>DATE</p>	<p>DRAWING NO</p> <p>500952</p>
			<p>SCALE 1:25</p> <p>SHEET 2 OF 2</p>		<p>ISSUE</p> <p>01</p>
					<p>SHEET SIZE</p> <p>A0</p>