

DRAWING NO.
ASY-10195

REVISION
REL-03

PROJECT CODE:
LICK-51

REQUIRED PER TELESCOPE: 1

MATERIAL: PER COMPONENT

CONDITION: PER COMPONENT

FINISH: PER COMPONENT

FINISH COLOR: PER COMPONENT

APPROXIMATE MASS: 4030 gm

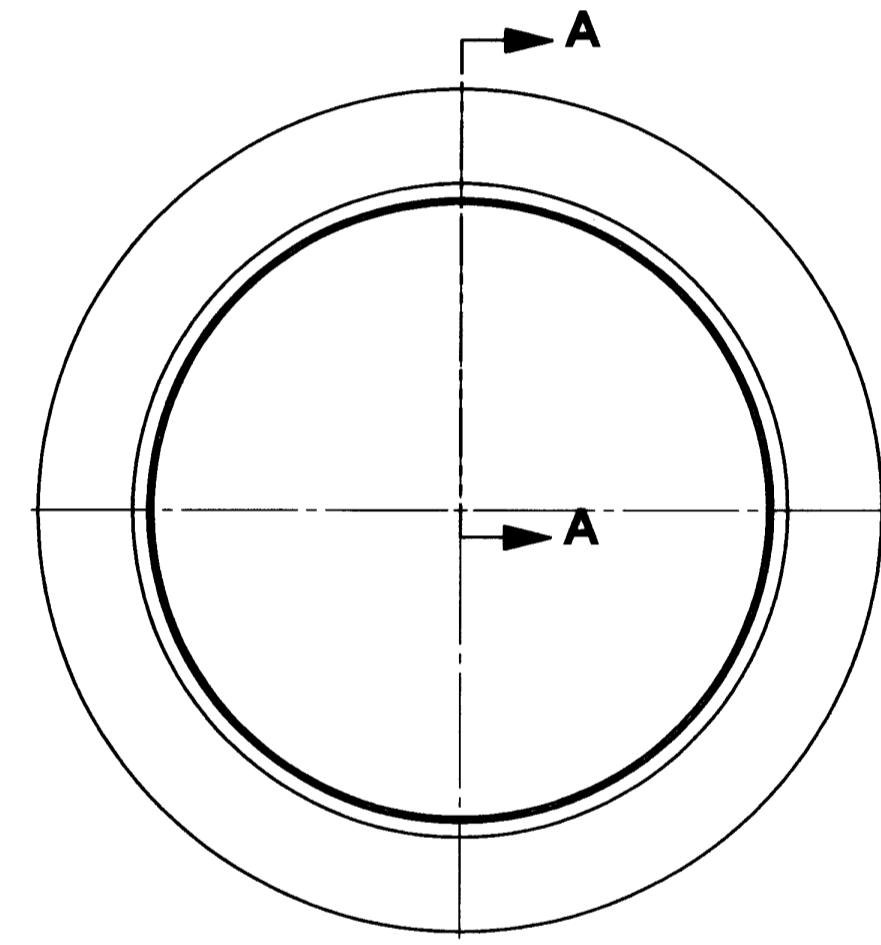
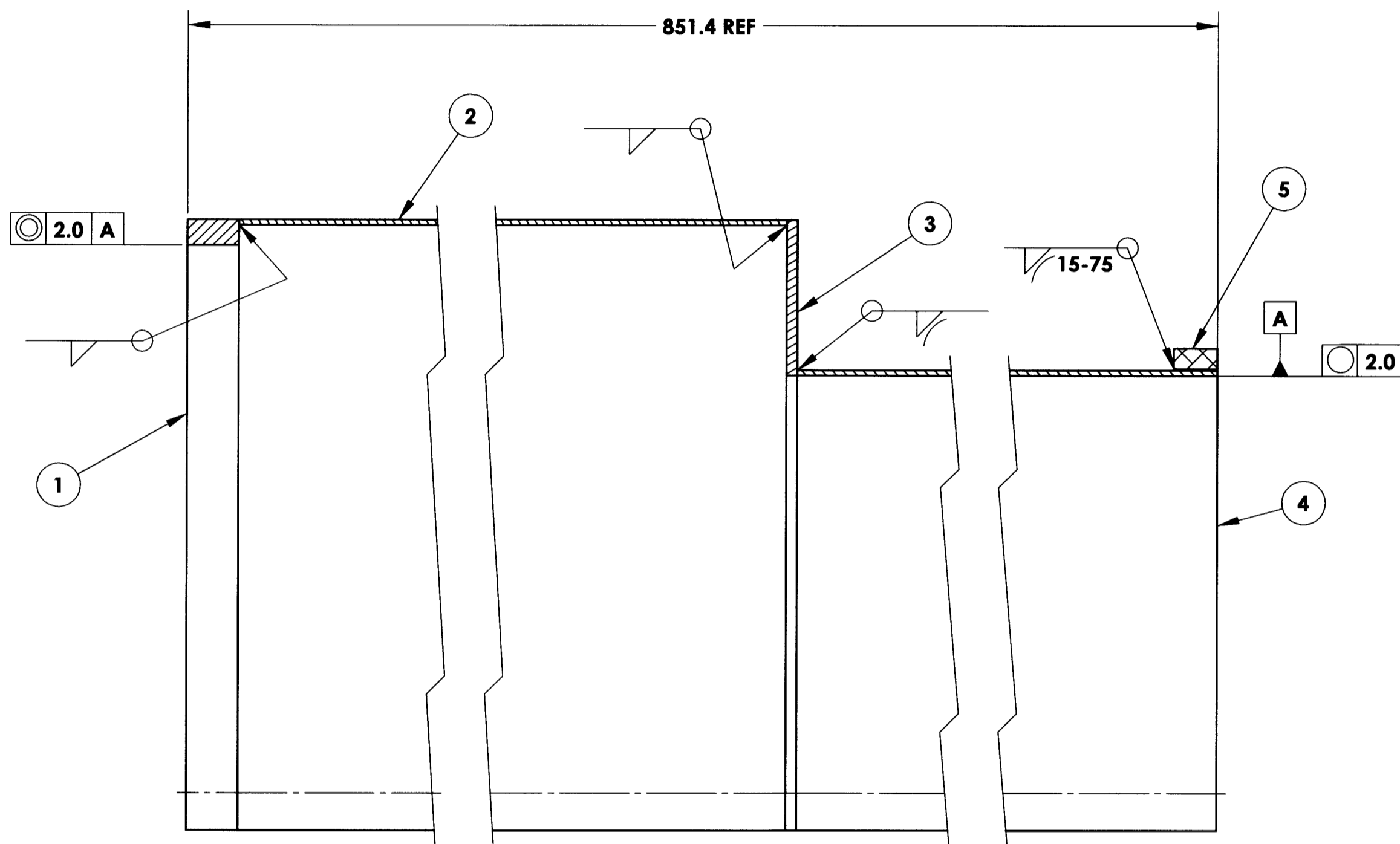
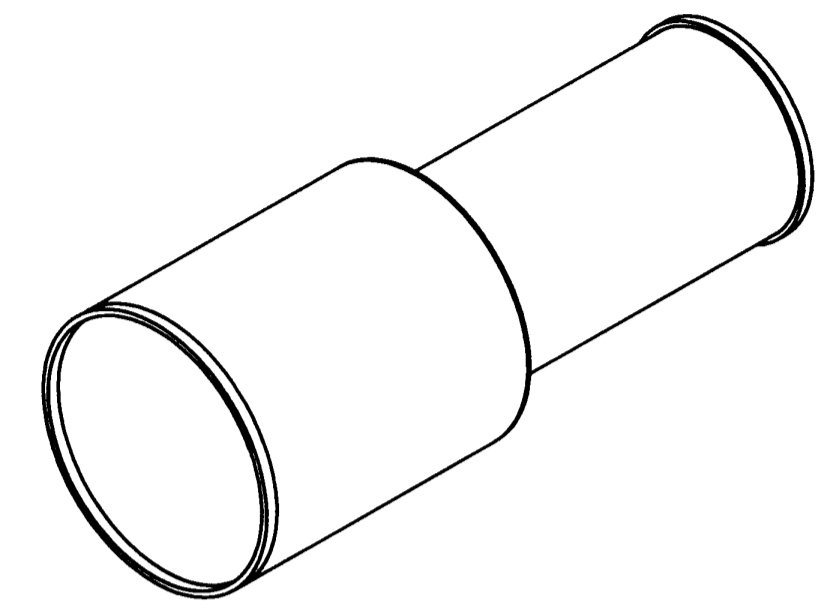
REFERENCE DOCUMENTS: N/A

WELDMENT NOTES:

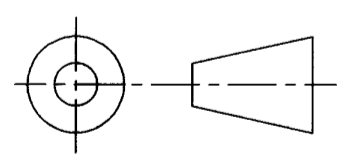
- ALL WELDS TO BE FULL THICKNESS AND CONTINUOUS
- ALL WELDING PROCEDURES TO BE PER THE A.I.S.C. MANUAL OF STEEL CONSTRUCTION
- ALL FILLETS ARE 6MM U.O.S.
- WELDMENT TO BE STRESS RELIEVED PRIOR TO MACHINING

REV.	DATE	DESCRIPTION	CHK'D	APPV'D	ZONE
1	1/30/2006	INITIAL RELEASE	KC	KG	
2	3/14/2008	REVISE PER ECO-1099	LRG	KG	
3	7/8/2009	REVISE PER ECO-1472	<i>zls</i>	<i>kn</i>	

Controlled Document
Confirm revision before using



ITEM NO.	QTY.	PART NUMBER	DESCRIPTION	Material	Weight
5	1	COM-13049	M3 BAFFLE RING	6061-T6 ALUMINUM	164.17
4	1	COM-10199	M3 BAFFLE UPPER TUBE	6061 Alloy ALUMINUM, 1/16" SHEET	1515.43
3	1	COM-10198	M3 BAFFLE TOP PLATE	6061 Alloy ALUMINUM, 1/8" SHEET	355
2	1	COM-10197	M3 BAFFLE LOWER TUBE	6061 Alloy ALUMINUM, 1\16" SHEET	1684
1	1	COM-10196	M3 BAFFLE MOUNTING PLATE	6061 Alloy ALUMINUM	313



DO NOT SCALE DRAWING

<p>COPYRIGHT</p> <p>THIS DOCUMENT & ENCLOSED PROPRIETARY INFORMATION REMAINS THE PROPERTY OF EOS TECHNOLOGIES, INC. THE INTELLECTUAL PROPERTY AND INFORMATION HEREIN MAY NOT BE COPIED NOR DISCLOSED WITHOUT WRITTEN CONSENT OF EOS TECHNOLOGIES, INC. MANAGEMENT</p>	<p>INTERPRET DIMENSIONS PER ASME Y14.5M-1994</p> <p>UNLESS OTHERWISE SPECIFIED:</p> <p>DIMENSIONS ARE IN MILLIMETERS</p> <p>TOLERANCES:</p> <p>X.X = ±0.25MM</p> <p>X.XX = ±0.10MM</p> <p>ANGLES = ±0.5°</p> <p>ROUNDS AND FILLETS ARE R3.0</p> <p>BREAK ALL SHARP EDGES 0.25MM X 0.25MM</p>	<p>WELDS ARE:</p> <p>MAX SIZE FILLET OR FULL PENETRATION GROOVE AS APPROPRIATE.</p> <p>ALL WELDS ARE CONTINUOUS</p> <p>NEAREST NOMINAL STOCK SIZE MAY BE SUBSTITUTED.</p> <p>INDICATED MACHINED SURFACES ✓ 3.2</p>	<p>DESIGN</p> <p>K. WASMER</p>	<p>DATE</p> <p>12-2-05</p>	<p>EOS TECHNOLOGIES, INC.</p> <p>3160 E. TRANCON WAY, SUITE 180, TUCSON, AZ 85706 PH: (520) 624-6399</p>		
			<p>DRAWN</p> <p>K. WASMER</p>	<p>DATE</p> <p>12-2-05</p>			
			<p>CHECKED</p> <p>K. CLARKE</p>	<p>DATE</p> <p>1/30/2006</p>			
			<p>APPROVED</p> <p>K. GONZALES</p>	<p>DATE</p> <p>1/31/2006</p>			
<p>TITLE</p> <p>M3 BAFFLE - WELDING</p>			<p>DRAWING NO.</p> <p>ASY-10195</p>		<p>STATUS</p> <p>Released</p>	<p>REVISION</p> <p>REL-03</p>	<p>SHEET SIZE</p> <p>A2</p>
			<p>SHEET 1 OF 1</p>		<p>SCALE 1:3</p>		

LICK