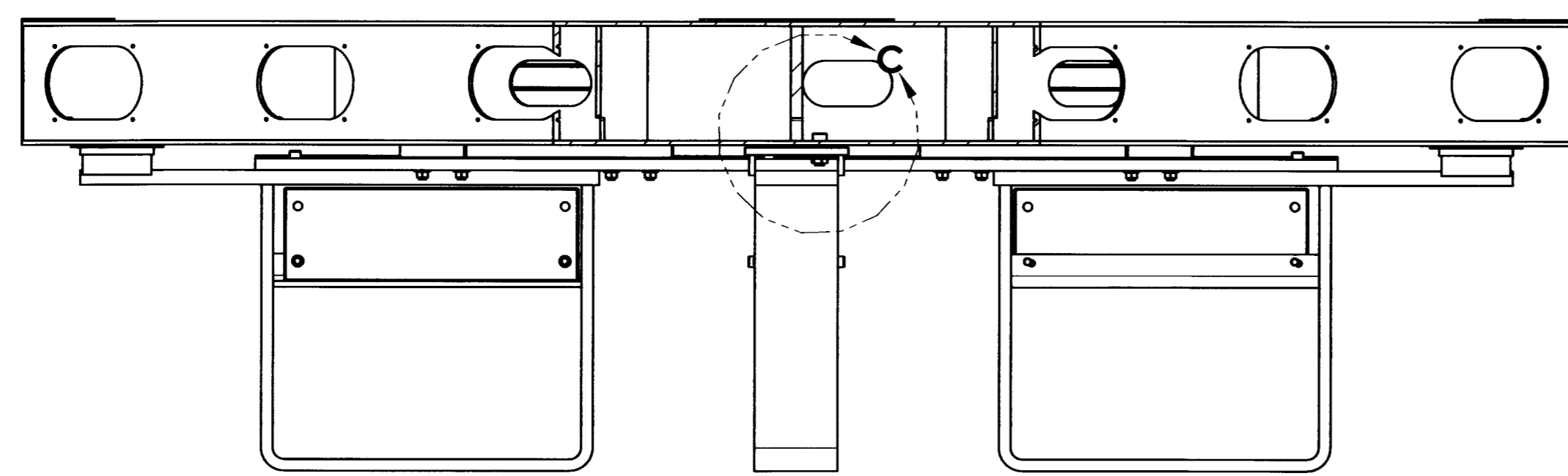


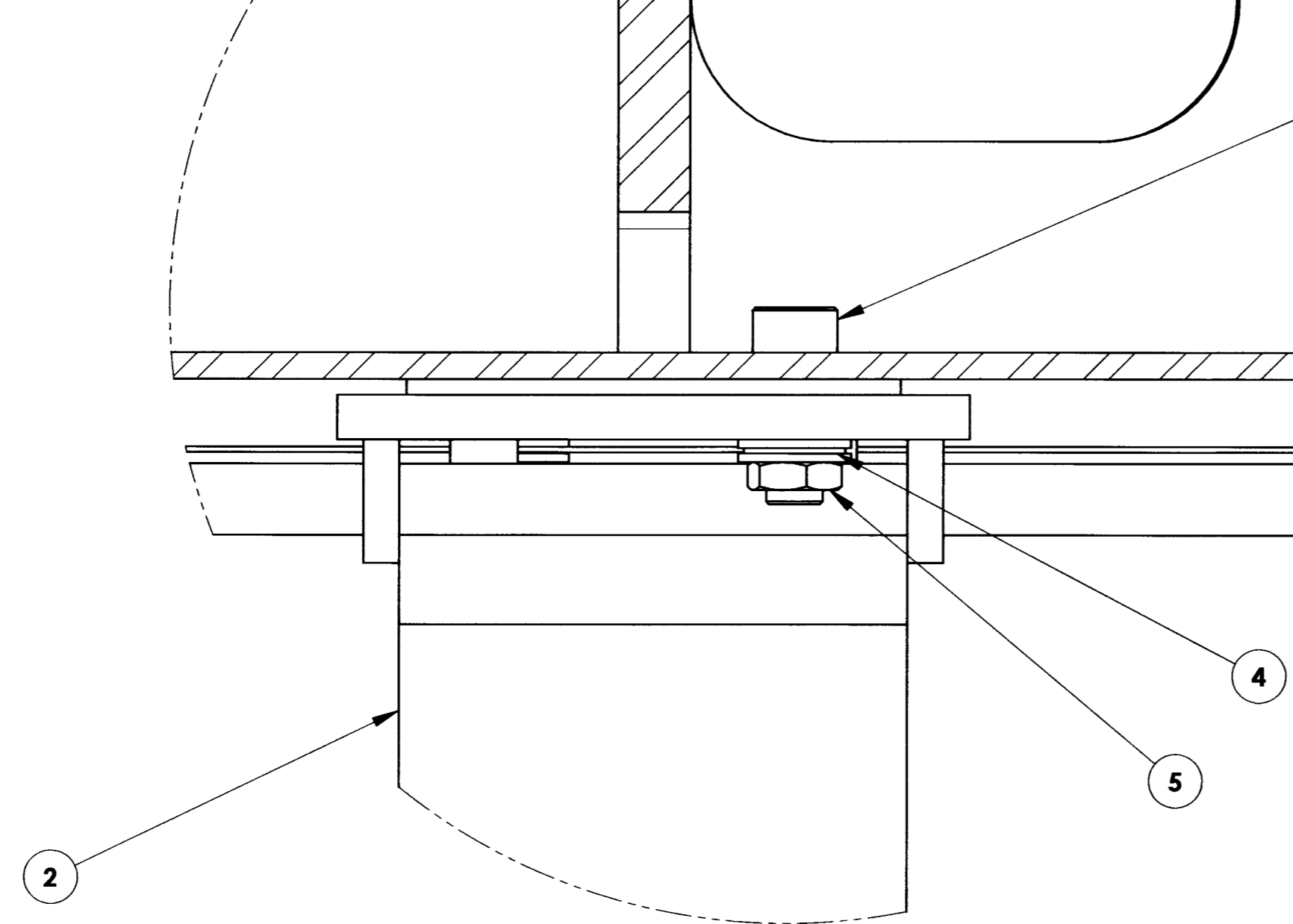
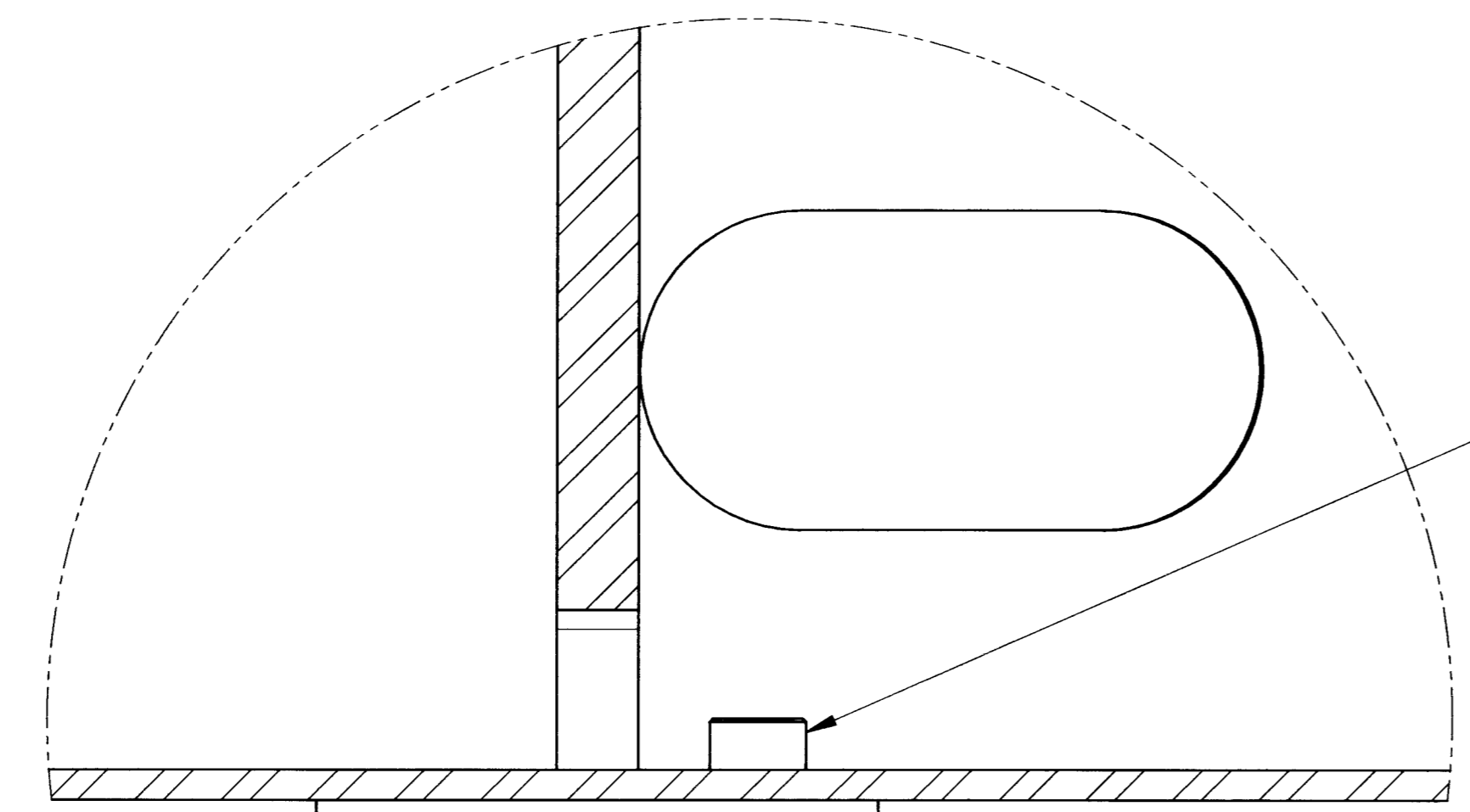
DRAWING NO.	ASY-12184	REVISION	REL-01
PROJECT CODE:	LICK-51		
MATERIAL:	PER COMPONENT		
CONDITION:	PER COMPONENT		
SURFACE FINISH:	PER COMPONENT		
FINISH COLOR:	PER COMPONENT		
APPROXIMATE MASS:	3997470.13 gm		
REFERENCE DOCUMENTS:	N/A		

REV.	DATE	DESCRIPTION	CHKD	APPVD	ZONE
1	4/2/07	INITIAL RELEASE	h	h	

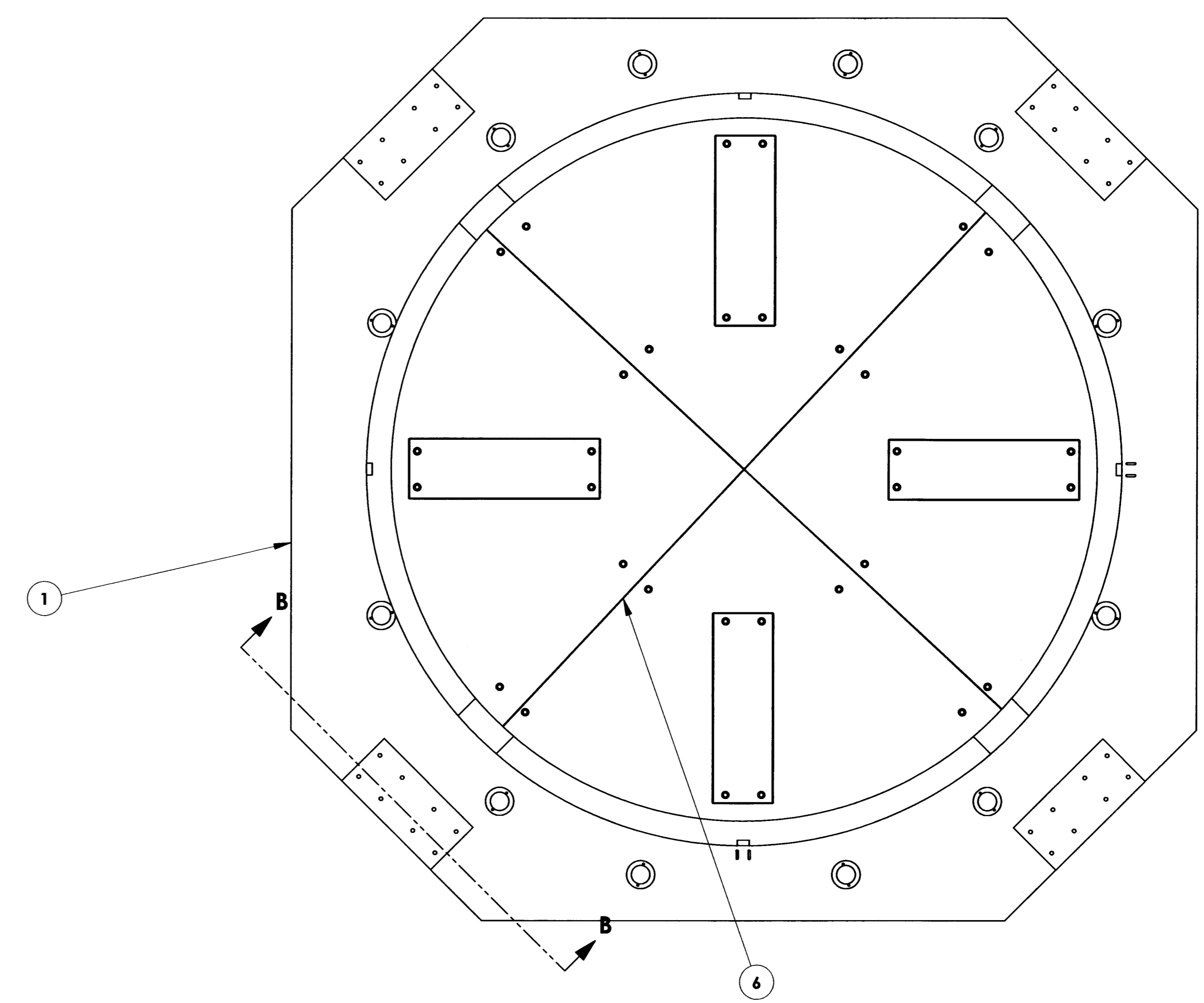
**Controlled Document**  
Confirm revision before using



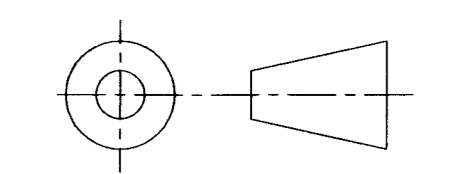
SECTION B-B  
SCALE 1 : 12



DETAIL C  
SCALE 1 : 2



ITEM NO.	QTY.	PART NUMBER	DESCRIPTION	Material	Weight
6	2	LSF TARGET STRING	LSF TARGET STRING	Nylon 6/10	10.34
5	4	0141496	NUT, JAM, M20-2.5	FASTENAL, ZINC PLATED ALLOY STEEL	41.070
4	4	COM-12181	20MM STRING GUIDE SPOOL	300 SERIES SS	54.38
3	4	COM-12180	20MM TARGET CENTERING BOLT	M20 X 50 SHCS, STAINLESS STEEL	189.71
2	1	ASY-8145	M1 DUMMY WEIGHT ASSEMBLY	PER COMPONENT	3051691.07
1	1	COM-5738	LSF WELDMENT MACHINED	ASTM A-36 STEEL	944617.7312 9946



DO NOT SCALE DRAWING

**COPYRIGHT**

THIS DOCUMENT & ENCLOSED PROPRIETARY INFORMATION REMAINS THE PROPERTY OF EOS TECHNOLOGIES, INC. THE INTELLECTUAL PROPERTY AND INFORMATION HEREIN MAY NOT BE COPIED NOR DISCLOSED WITHOUT WRITTEN CONSENT OF EOS TECHNOLOGIES, INC. MANAGEMENT

INTERPRET DIMENSIONS PER ASME Y14.5M-1994 UNLESS OTHERWISE SPECIFIED:

DIMENSIONS ARE IN MILLIMETERS  
X.X = ±0.25MM  
X.XX = ±0.10MM  
ANGLES = ±0.5°

ROUNDS AND FILLETS ARE R3.0  
BREAK ALL SHARP EDGES 0.25MM X 0.25MM

WELDS ARE: MAX SIZE FILLET OR FULL PENETRATION GROOVE WELD AS APPROPRIATE.

ALL WELDS ARE CONTINUOUS

NEAREST NOMINAL STOCK SIZE MAY BE SUBSTITUTED UPON APPROVAL.

INDICATED MACHINED SURFACES

DESIGN	L. GREGERSEN	DATE	3/16/07
DRAWN	L. GREGERSEN	DATE	3/16/07
CHECKED	<i>K. Grady</i>	DATE	4/2/07
APPROVED	<i>K. Grady</i>	DATE	4/2/07
REVIEWED	<i>J. Glass</i>	DATE	4/11/07

		3160 E. TRANSCON WAY, SUITE 180, TUCSON, AZ 85706 PH: (520) 624-6399	
<b>LSF TARGET MOUNT ASSEMBLY</b>			
DRAWING NO.	ASY-12184	STATUS	Released
REVISION	REL-01	SHEET SIZE	A1
SHEET	1 OF 1	SCALE	1:20