

DRAWING NO. **ASY-13716** REVISION **REL-01**

PROJECT CODE: **LICK-51**

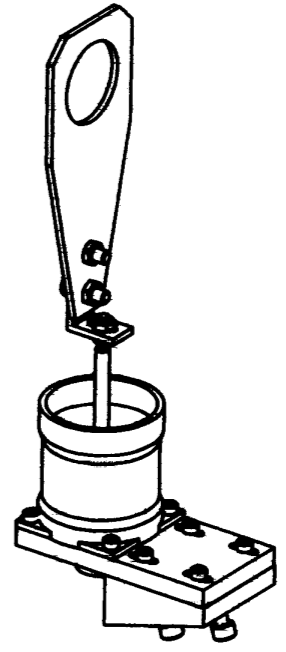
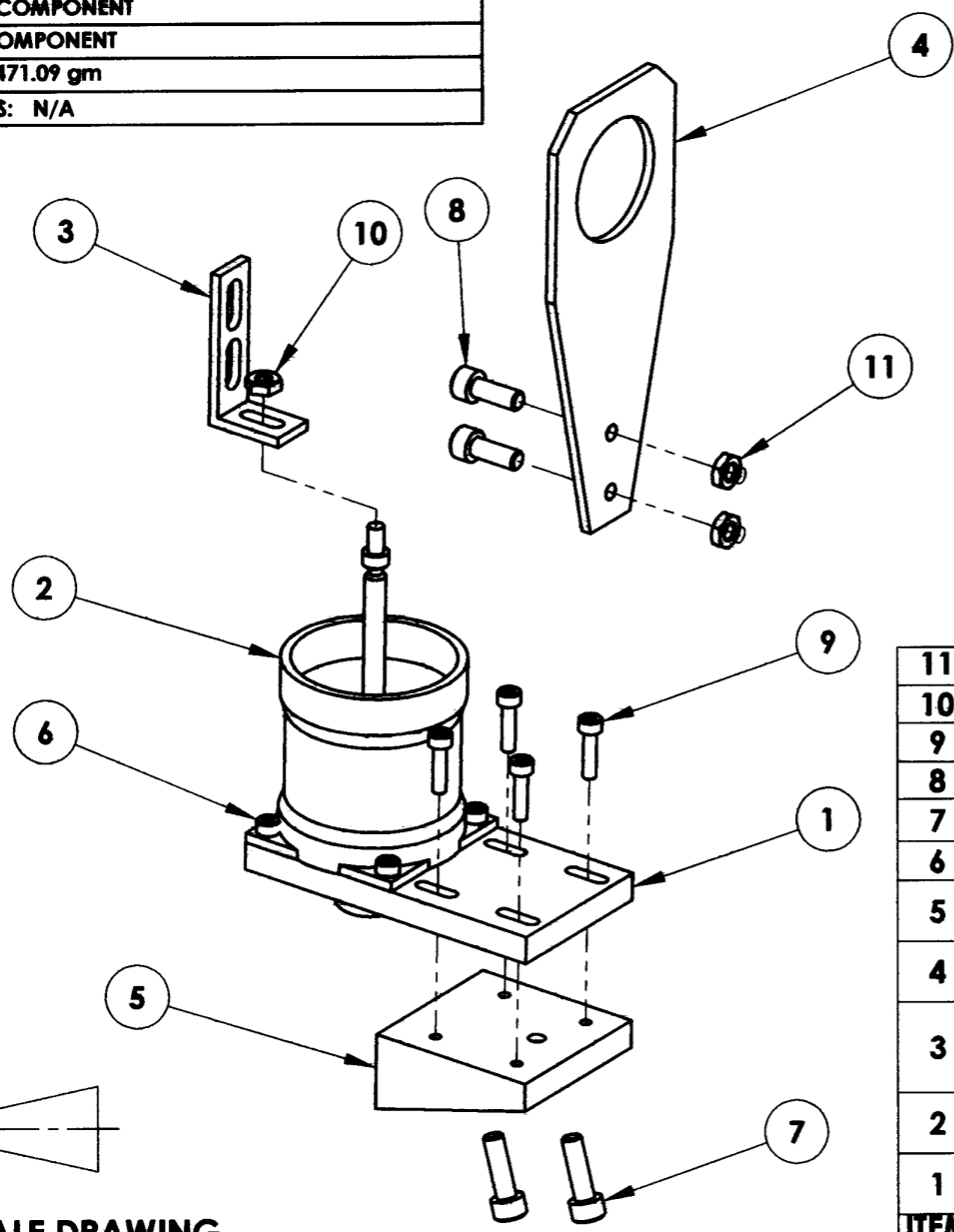
MATERIAL: PER COMPONENT
 CONDITION: PER COMPONENT
 SURFACE FINISH: PER COMPONENT
 FINISH COLOR: PER COMPONENT
 APPROXIMATE MASS: 471.09 gm
 REFERENCE DOCUMENTS: N/A

COPYRIGHT

THIS DOCUMENT & ENCLOSED PROPRIETARY INFORMATION REMAINS THE PROPERTY OF EOS TECHNOLOGIES, INC. THE INTELLECTUAL PROPERTY AND INFORMATION HEREIN MAY NOT BE COPIED NOR DISCLOSED WITHOUT WRITTEN CONSENT OF EOS TECHNOLOGIES, INC. MANAGEMENT

REV.	DATE	DESCRIPTION	CHK'D	APPV'D	ZONE
1	4-3-09	INITIAL RELEASE	<i>[Signature]</i>	<i>[Signature]</i>	

Controlled Document
Confirm revision before using



ITEM NO.	QTY.	PART NUMBER	DESCRIPTION	Material	Weight
11	2	B18.2.4.5M	Hex jam nut, M6 x 1 --D-N		
10	1	MSHXNUT 0.190-24-S-N			
9	4	B18.3.1M	4 x 0.7 x 16 Hex SHCS -- 16NHX		
8	2	B18.3.1M	6 x 1.0 x 16 Hex SHCS -- 16NHX		
7	2	B18.3.1M	6 x 1.0 x 20 Hex SHCS -- 20NHX		
6	4	B18.3.1M	4 x 0.7 x 10 Hex SHCS -- 10NHX		
5	1	COM-13719	AIRPOT ANGLED SHIM	6061-T6 ALUMINUM	134.76
4	1	COM-13718	AIRPOT SHAFT EXTENSION (LONG)	6061-T6 ALUMINUM	48.57
3	1	COM-13714	AIRPOT ANGLE BRACKET	MAKE FROM 6061-T6 ALUMINUM RIGHT ANGLE 2"X1"X1/8"	7.11
2	1	CPP-13713	DASHPOT, AIRPOT, 1" STROKE	VARIOUS	124.92
1	1	COM-13717	AIRPOT MOUNT BRACKET 2	6061-T6 ALUMINUM	106.34

DO NOT SCALE DRAWING

INTERPRET DRAWINGS PER ASME Y14.5M-1994 UNLESS OTHERWISE SPECIFIED: DIMENSIONS ARE IN MILLIMETERS

X.X = ±0.25
 X.XX = ±0.10
 ANGLES = ±0.5°
 ROUNDS AND FILLETS ARE R3.0
 BREAK ALL SHARP EDGES 0.25MM X 0.25MM

INDICATED MACHINED SURFACES

DESIGN	J. LOPEZ	DATE	3/24/09
DRAWN	J. LOPEZ	DATE	3/24/09
CHECKED	<i>[Signature]</i>	DATE	4-3-09
APPROVED	<i>[Signature]</i>	DATE	4/3/09
REVIEWED - DESIGN	<i>[Signature]</i>	DATE	4/6/09
REVIEWED - ASSEMBLY	<i>[Signature]</i>	DATE	4/3/10

EOS TECHNOLOGIES, INC.
 3160 E. TRANCON WAY, SUITE 180, TUCSON, AZ 85706 PH: (520) 624-6399

TITLE: **AIRPOT ASSEMBLY 2**

DRAWING NO. ASY-13716	STATUS Released	REVISION REL-01	SHEET SIZE A3
CONFIG. # FRM-12380-1	SCALE 1:2		