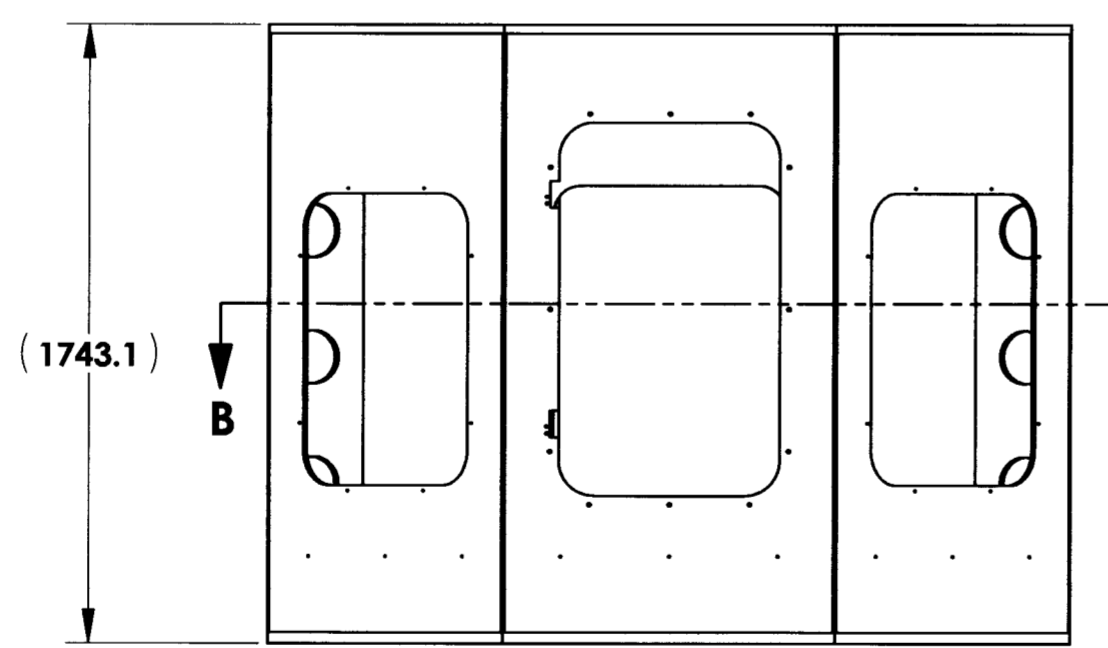
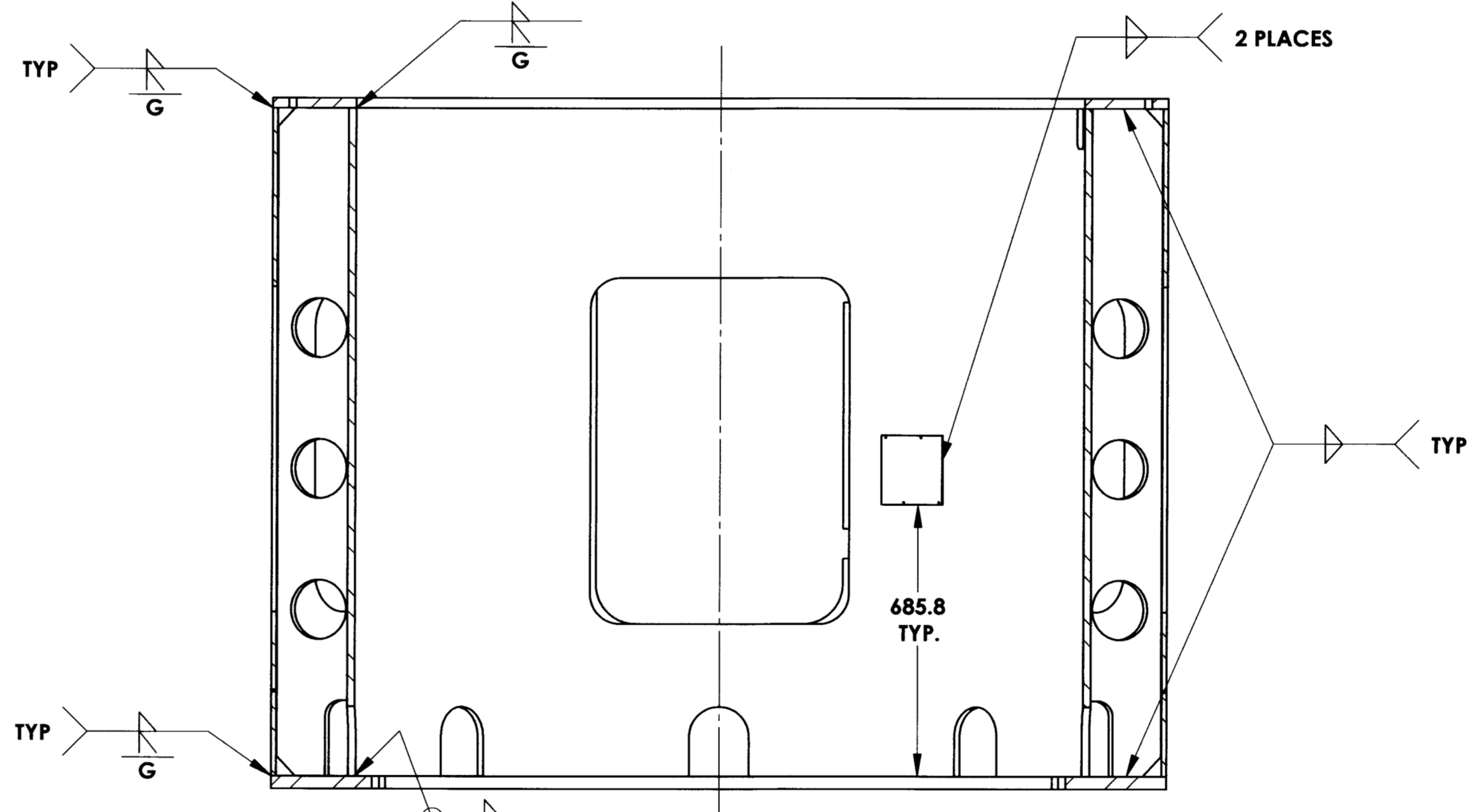
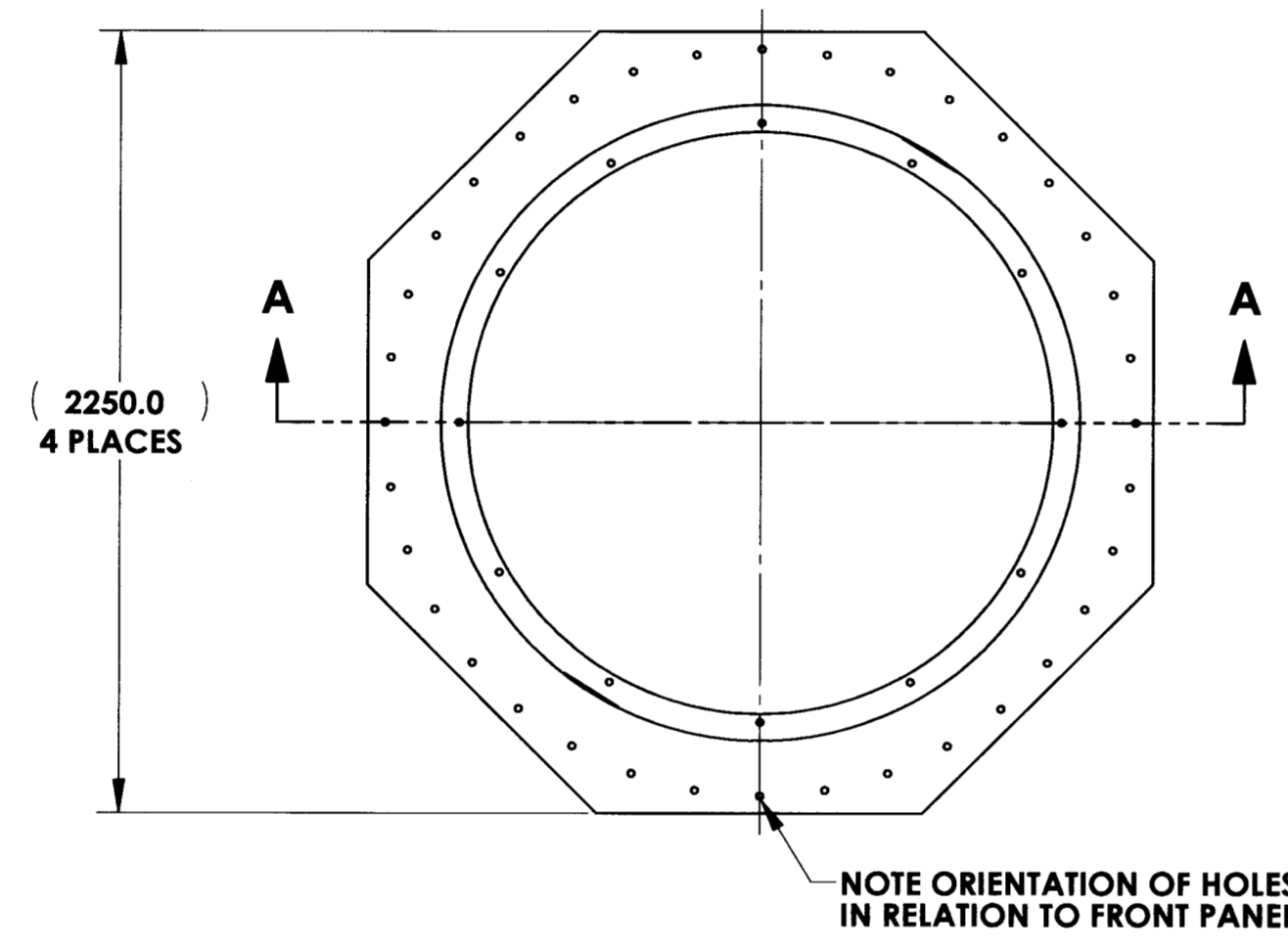
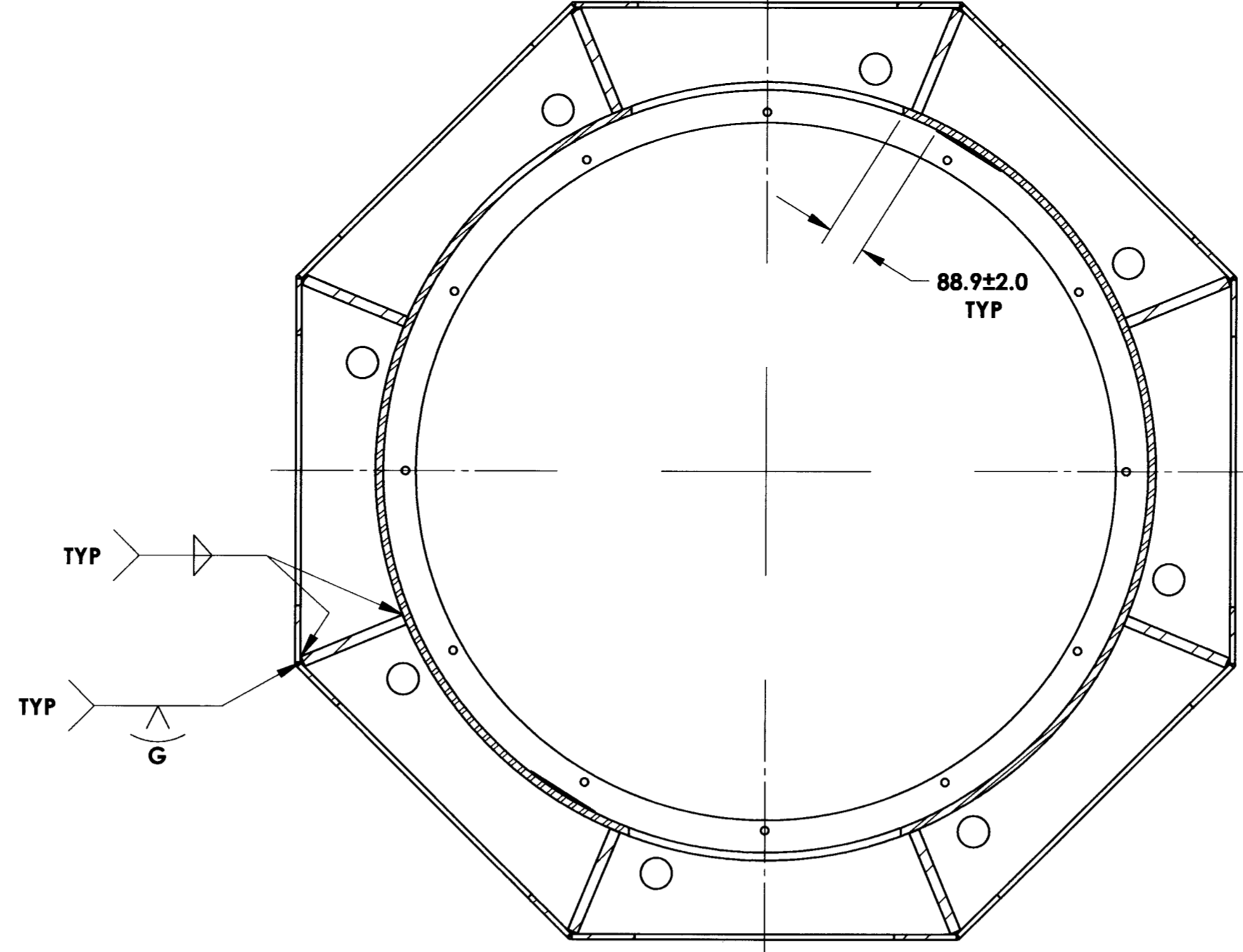
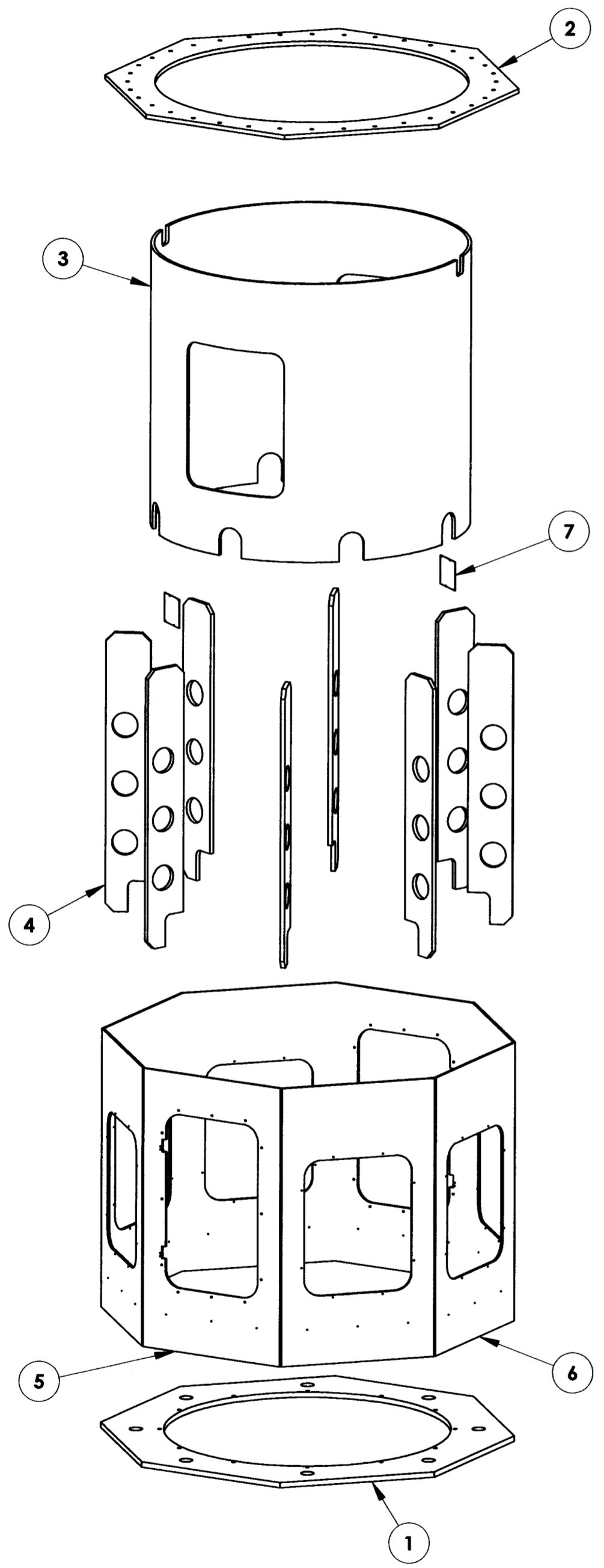
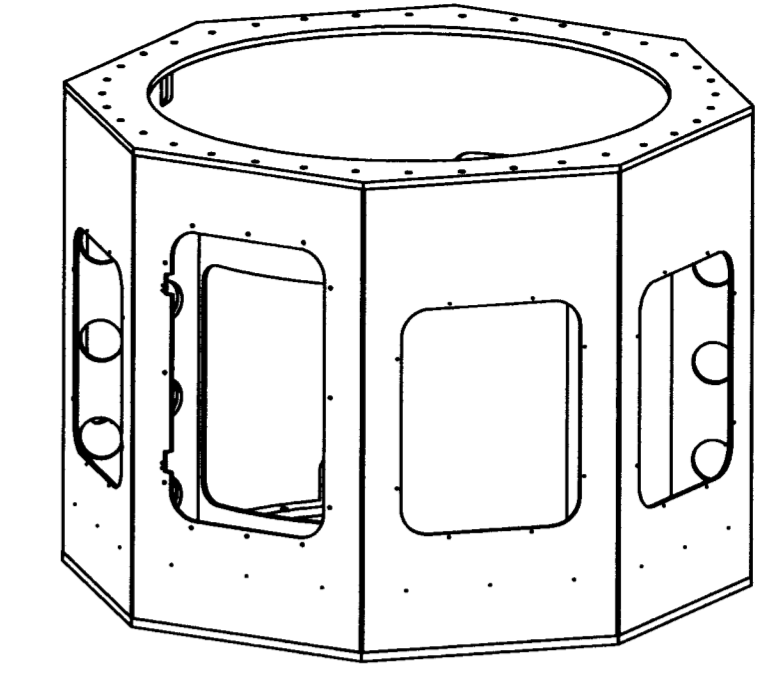


DRAWING NO.	REVISION
<b>ASY-4961</b>	<b>REL-01</b>
PROJECT CODE:	LICK-51
REQUIRED PER TELESCOPE:	1
MATERIAL:	PER COMPONENT
CONDITION:	PER COMPONENT
SURFACE FINISH:	PER COMPONENT
FINISH COLOR:	PER COMPONENT
APPROXIMATE MASS:	3455046.48 gm
REFERENCE DOCUMENTS:	N/A

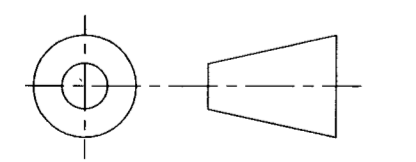
NOTE: ALL WELDS AND WELD PREPS SHALL BE COMPLETED IN ACCORDANCE WITH THE CURRENT AISC MANUAL OF STEEL CONSTRUCTION.

REV.	DATE	DESCRIPTION	CHKD	APPVD	ZONE
1	12/14/04	INITIAL RELEASE	ETD	JXP	

Controlled Document  
Confirm revision before using



ITEM NO.	Default/QT Y.	PART NUMBER	DESCRIPTION	Material	Weight
7	2	COM-6460	PLATE INTERPOLATOR MOUNTING	A-36 STEEL 12 GAUGE SHEET	662.65
6	6	COM-4962	BASE SIDE PANEL	A36 STRUCTURAL STEEL, 1/2" THK	103165.82
5	2	COM-4963	BASE FRONT PANEL	A36 STRUCTURAL STEEL, 1/2" THK	90844.52
4	8	COM-4964	BASE RIB	A36 STRUCTURAL STEEL, 1" THK	72839.23
3	1	COM-4965	BASE INNER TUBE	A36 STRUCTURAL STEEL, 3/4" THK	1269268.78
2	1	COM-4967	BASE TOP PLATE	A36 STRUCTURAL STEEL, 1" THK	311491.63
1	1	COM-4966	BASE BOTTOM PLATE	A36 STRUCTURAL STEEL, 1 1/4" THK	489563.01



DO NOT SCALE DRAWING

**COPYRIGHT**

THIS DOCUMENT & ENCLOSED PROPRIETARY INFORMATION REMAINS THE PROPERTY OF EOS TECHNOLOGIES, INC. THE INTELLECTUAL PROPERTY AND INFORMATION HEREIN MAY NOT BE COPIED NOR DISCLOSED WITHOUT WRITTEN CONSENT OF EOS TECHNOLOGIES, INC. MANAGEMENT

UNLESS OTHERWISE SPECIFIED:

DIMENSIONS ARE IN MILLIMETERS  
 X.X = ±0.25MM  
 X.XX = ±0.10MM  
 ANGLES = ±0.5°  
 ROUNDS AND FILLETS ARE R3.0  
 BREAK ALL SHARP EDGES 0.25MM X 0.25MM

WELDS ARE: MAX SIZE FILLET OR FULL PENETRATION GROOVE WELD AS APPROPRIATE.

ALL WELDS ARE CONTINUOUS  
 NEAREST NOMINAL STOCK SIZE MAY BE SUBSTITUTED UPON APPROVAL.  
 INDICATED MACHINED SURFACES 3.2 ✓

DESIGN	G. J. PENTLAND	DATE	12/14/04
DRAWN	K. WASMER	DATE	12/14/04
CHECKED	<i>[Signature]</i>	DATE	12/16/04
APPROVED	<i>[Signature]</i>	DATE	12/16/04

EOS TECHNOLOGIES, INC. 3160 E. TRANCON WAY, SUITE 180, TUCSON, AZ 85706 PH: (520) 624-6399			
<b>BASE WELDMENT</b>			
DRAWING NO.	ASY-4961	STATUS	Released
REVISION	REL-01	SHEET	1 OF 1
SHEET SIZE	A1	SCALE	1:20