

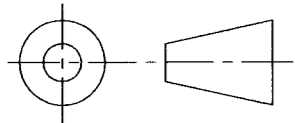
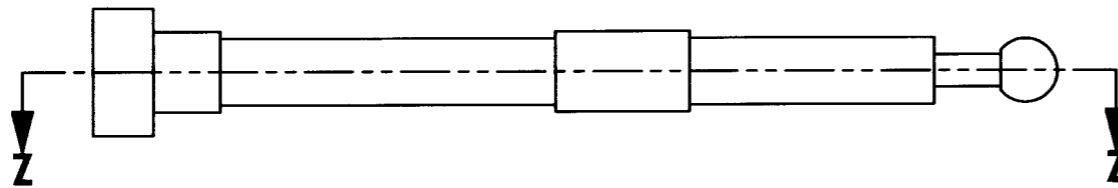
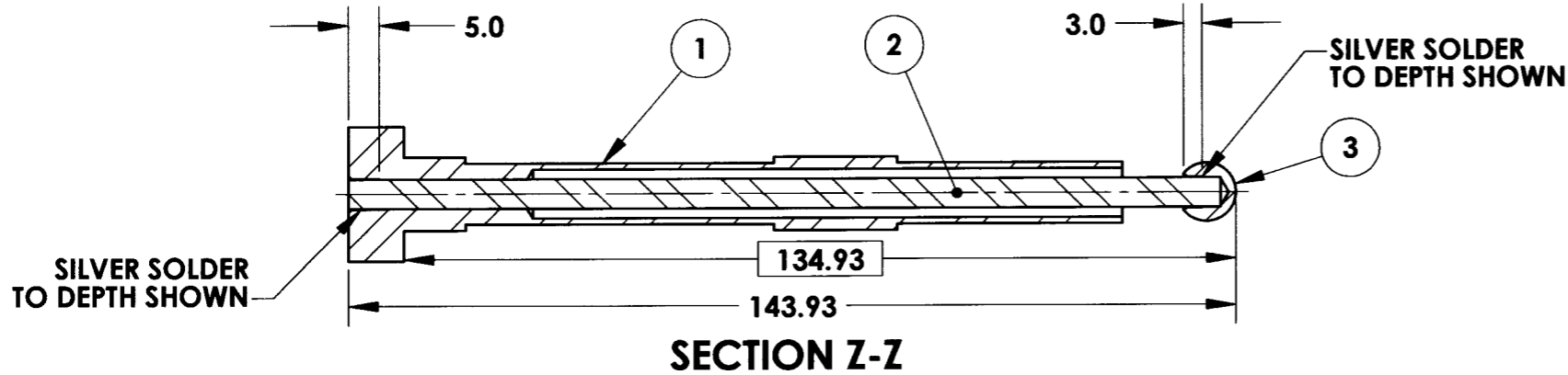
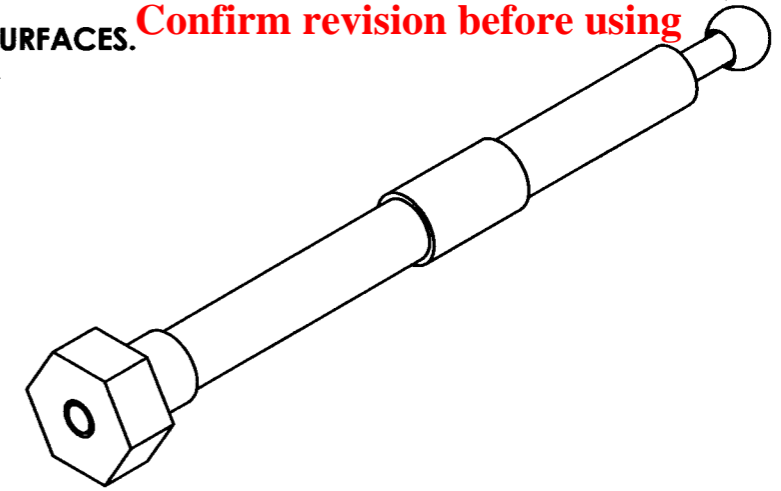
DRAWING NO. ASY-5235	REVISION REL-02
PROJECT CODE: LICK-51	
REQUIRED PER TELESCOPE: 9 TOTAL PER TELESCOPE	
MATERIAL: AISI 304 STAINLESS STEEL	
CONDITION: N/A	
SURFACE FINISH: N/A	
FINISH COLOR: NATURAL	
APPROXIMATE MASS: 85 gm	

COPYRIGHT
THIS DOCUMENT & ENCLOSED PROPRIETARY INFORMATION REMAINS THE PROPERTY OF EOS TECHNOLOGIES, INC. THE INTELLECTUAL PROPERTY AND INFORMATION HEREIN MAY NOT BE COPIED NOR DISCLOSED WITHOUT WRITTEN CONSENT OF EOS TECHNOLOGIES, INC. MANAGEMENT

REV.	DATE	DESCRIPTION	CHK'D	APP'VD	ZONE
1	11/10/04	INITIAL RELEASE	KLW	GJP	
2	1/31/2005	REVISED PER ECO #0278	<i>KLW</i>	<i>Jif</i>	

Controlled Document
Confirm revision before using

NOTES:
1) USE WHITE, GENERAL PURPOSE SILVER BRAZING PASTE FLUX TO CLEAN SURFACES. USE A NICKLE-BEARING, 3/64" DIAMETER SILVER ALLOY FOR SOLDERING.
2) USE CORRECT NOODLE FLEXURE BALL.



ITEM NO.	QTY.	PART NUMBER	DESCRIPTION	Material	Weight
3	1	COM-5234	NOODLE FLEXURE BALL, TYPE II	AISI 304	3
2	1	COM-5233	NOODLE FLEXURE ROD, TYPE II	AISI 304, #10 DRILL ROD STOCK	21
1	1	COM-5232	NOODLE FLEXURE TUBE, TYPE II	AISI 304, 3/4" HEX STOCK	61

UNLESS OTHERWISE SPECIFIED: DIMENSIONS ARE IN MILLIMETERS X.X = ±0.25 X.XX = ±0.10 ANGLES = ±0.5° ROUNDS AND FILLETS ARE R3.0 BREAK ALL SHARP EDGES 0.25MM X 0.25MM INDICATED MACHINED SURFACES	DESIGN	M. NICKERSON	DATE	11/24/03	 EOS TECHNOLOGIES, INC. 925 WEST GRANT ROAD - TUCSON - ARIZONA - 85705 - (520) 624-6399	
	DRAWN	J. CATONE	DATE	1/30/04		
	CHECKED	KEVIN WASMER	DATE	11/10/04		
	APPROVED	GORDON PENTLAND	DATE	11/10/04		
TITLE <h2 align="center">NOODLE FLEXURE, TYPE II</h2>						
DRAWING NO.			STATUS		REVISION	SHEET SIZE
ASY-5235			Released		REL-02	A3
SCALE			1:1			