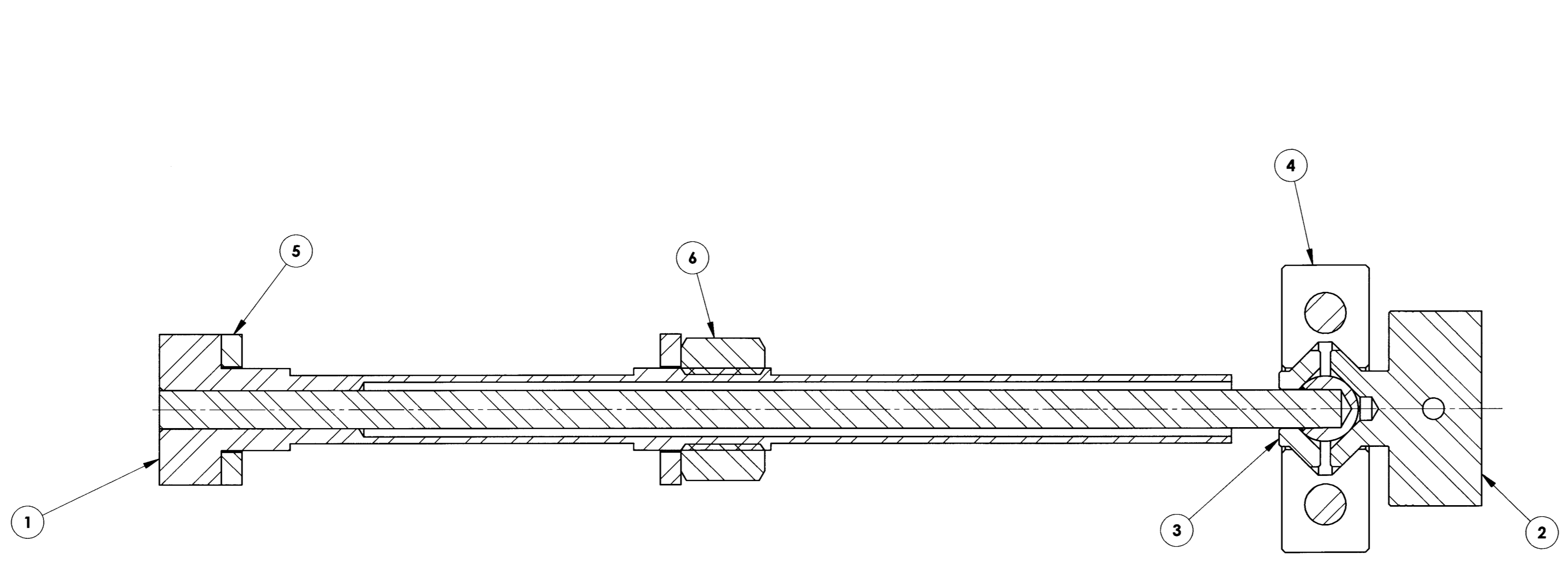


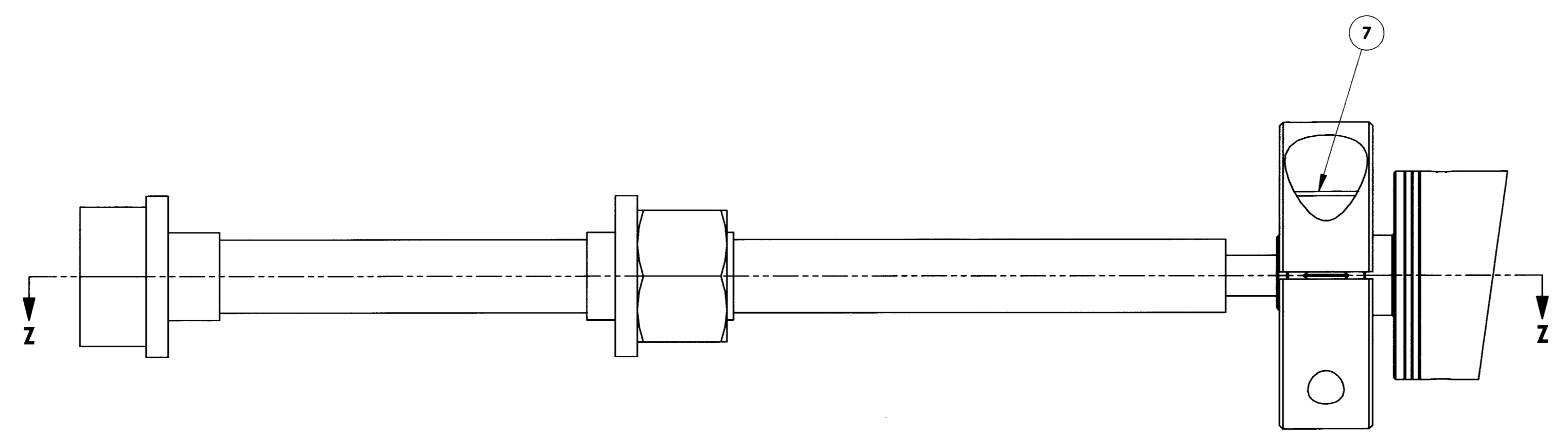
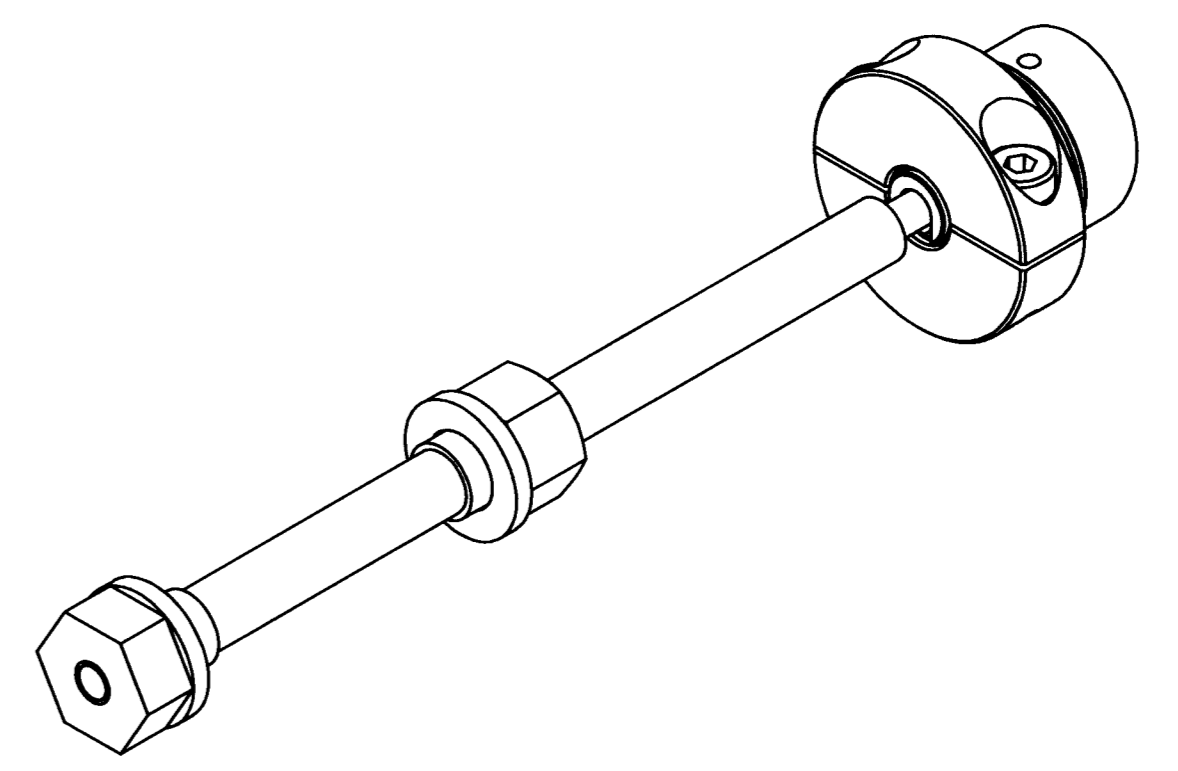
REV.	DATE	DESCRIPTION	CHKD	APPVD	ZONE
1	11-10-04	INITIAL RELEASE	KLW	BSM	

DRAWING NO. <b>ASY-5241</b>	REVISION <b>REL-01</b>
PROJECT CODE: <b>LICK-51</b>	
REQUIRED PER TELESCOPE: 12 TOTAL PER TELESCOPE	
MATERIAL: N/A	
CONDITION: N/A	
SURFACE FINISH: N/A	
FINISH COLOR: N/A	
APPROXIMATE MASS: 323 gm	

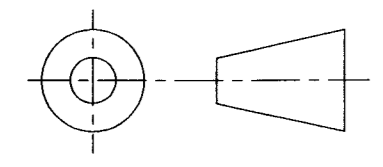
**Controlled Document**  
Confirm revision before using



**SECTION Z-Z**



ITEM NO.	Default/QTY.	PART NUMBER	DESCRIPTION	Material	Weight
7	2	McMASTER-CARR #92855A619 OR EQUAL	M6x20 LOW HEAD SHCS, DIN 7984-A2	18-8 STAINLESS STEEL	6
6	1	McMASTER-CARR #94150A360 OR EQUAL	M12 HEXAGON NUT, DIN 934	316 STAINLESS STEEL	15
5	2	COM-5167	NOODLE FLEXURE SHIM	AISI 304	6
4	1	COM-5166	NOODLE FLEXURE CLAMP	AISI 304, 1/2" THICK	97
3	1	COM-5165	NOODLE FLEXURE CLAMP PAD	AISI 304	4
2	1	COM-5523	INVAR PUCK, TYPE III	INVAR	75
1	1	ASY-5240	NOODLE FLEXURE, TYPE III	AISI 304	102



<p align="center"><b>COPYRIGHT</b></p> <p>THIS DOCUMENT &amp; ENCLOSED PROPRIETARY INFORMATION REMAINS THE PROPERTY OF EOS TECHNOLOGIES, INC. THE INTELLECTUAL PROPERTY AND INFORMATION HEREIN MAY NOT BE COPIED NOR DISCLOSED WITHOUT WRITTEN CONSENT OF EOS TECHNOLOGIES, INC. MANAGEMENT</p>	<p>UNLESS OTHERWISE SPECIFIED:</p> <p>DIMENSIONS ARE IN MILLIMETERS</p> <p>X.X = ±0.25MM</p> <p>X.XX = ±0.10MM</p> <p>ANGLES = ±0.5°</p> <p>ROUNDS AND FILLETS ARE R3.0</p> <p>BREAK ALL SHARP EDGES 0.25MM X 0.25MM</p>	<p>WELDS ARE: MAX SIZE FILLET OR FULL PENETRATION GROOVE WELD AS APPROPRIATE.</p> <p>ALL WELDS ARE CONTINUOUS</p> <p>NEAREST NOMINAL STOCK SIZE MAY BE SUBSTITUTED UPON APPROVAL.</p> <p>INDICATED MACHINED SURFACES</p>	<p>DESIGN <b>M. NICKERSON</b> DATE <b>8/24/03</b></p>	<p><b>EOS</b> <b>EOS TECHNOLOGIES, INCORPORATED</b></p> <p>925 W. GRANT RD, TUCSON, AZ 85705 PH: (520) 624-6399 www.eostech.com</p>
			<p>DRAWN <b>J. CATONE</b> DATE <b>2/25/04</b></p> <p>CHECKED <i>[Signature]</i> DATE <b>11-10-04</b></p> <p>APPROVED <i>[Signature]</i> DATE <b>11/10/04</b></p>	