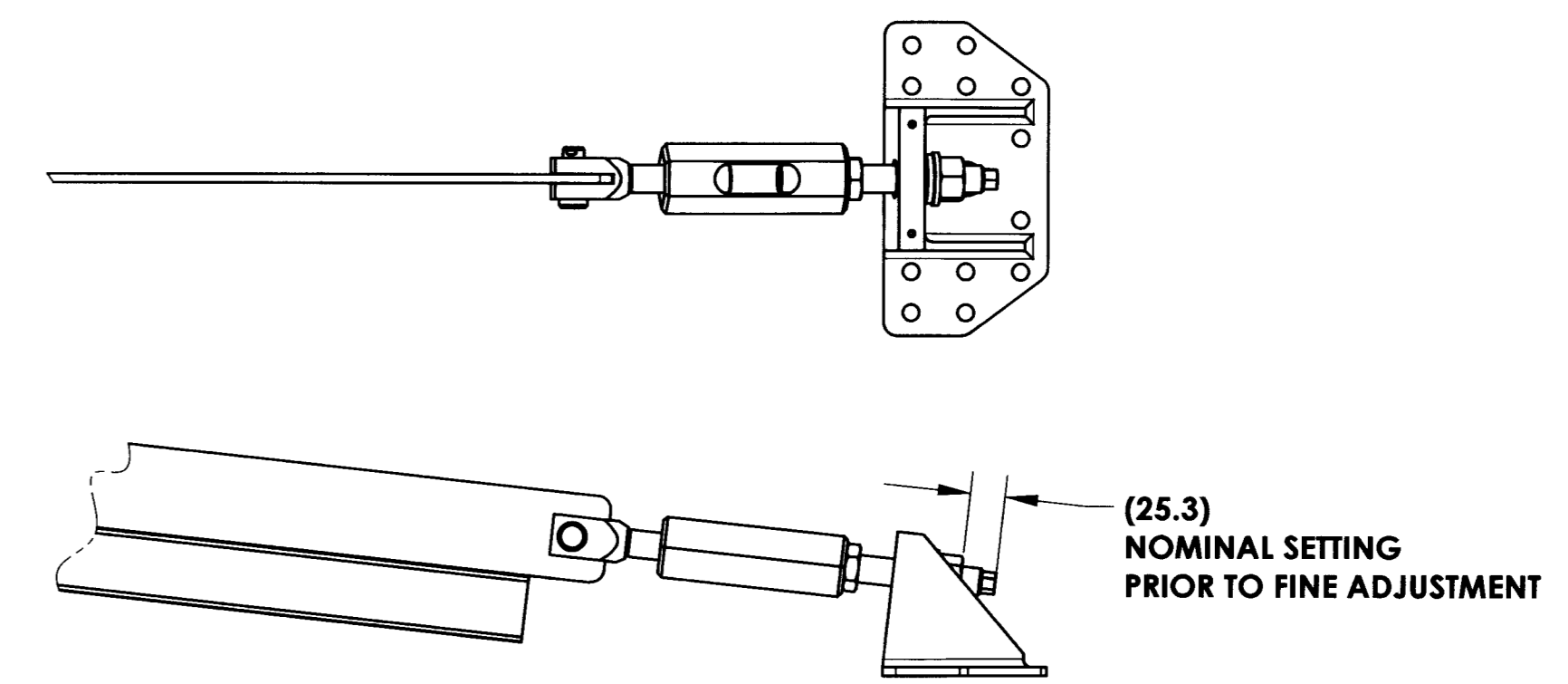
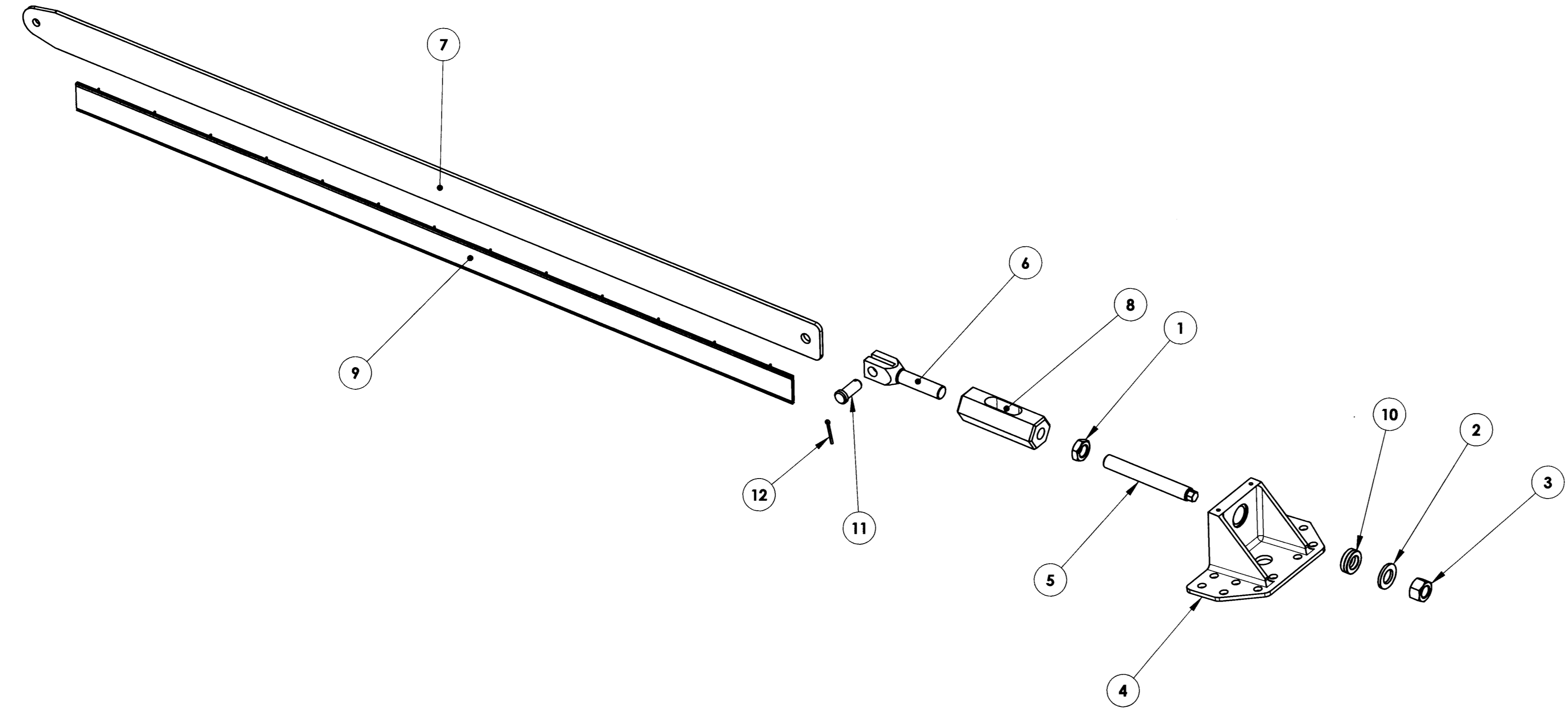
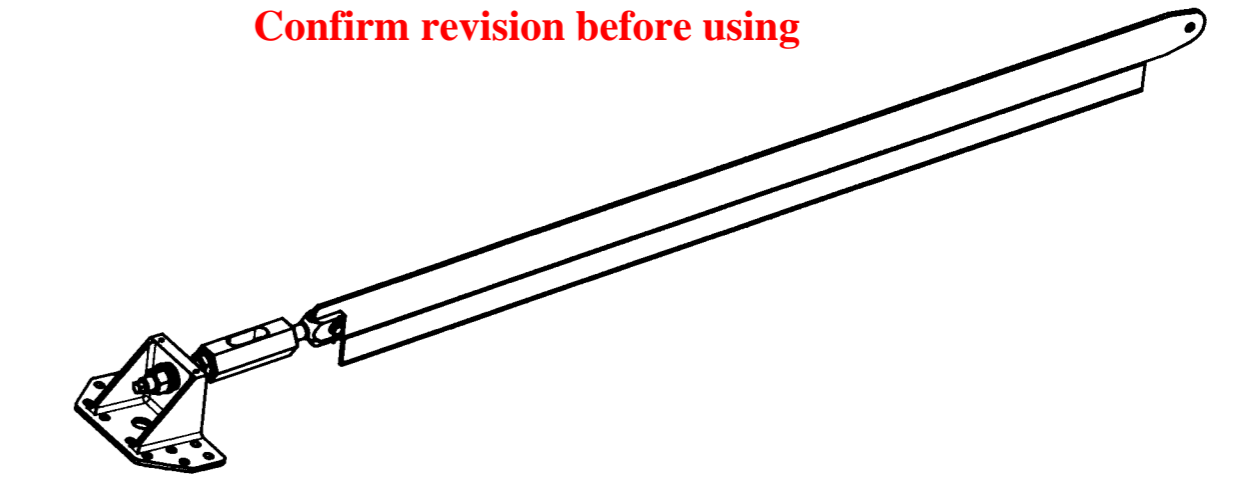


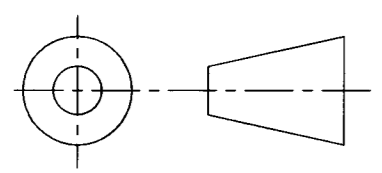
DRAWING NO. ASY-5249	REVISION REL-02
PROJECT CODE: LICK-51	
REQUIRED PER TELESCOPE: 8	
MATERIAL: PER COMPONENT	
CONDITION: PER COMPONENT	
SURFACE FINISH: PER COMPONENT	
FINISH COLOR: PER COMPONENT	
APPROXIMATE MASS: 10346.13 gm	
REFERENCE DOCUMENTS:	

REV.	DATE	DESCRIPTION	CHK'D	APP'VD	ZONE
1	3/4/2005	INITIAL RELEASE	KLW	GJP	
2	11/6/2008	REVISE PER ECO-1207	ZRD		

Controlled Document
Confirm revision before using



ITEM NO.	QTY.	PART NUMBER	DESCRIPTION	Material	Weight
12	1	CPP-13443	PIN, COTTER, 1/8"	STEEL, MCM 98338A190	2.30
11	1	CPP-13442	PIN, CLEVIS, 5/8" X 1-1/2"	ZINC PLATED STEEL MCM 97245A451	74.628
10	1	McM 98148A174	SPHERICAL WASHER SET, M20	HARDENED STEEL, MCMMASTER #98148A174	
9	1	ASY-5256	M2 CABLE GUIDE ASSEMBLY	PER COMPONENT	420.42
8	1	COM-5253	M2 DIFFERENTIAL TURNBUCKLE	1045 CF STEEL, 1 3/4" HEX STOCK	1225.35
7	1	COM-5251	M2 SPIDER VANE	AISI 1045 CF STEEL, 2 1/2" X 1/4" THK.	4543.16
6	1	COM-5252	M2 TURNBUCKLE FORK	AISI 1040 CF STEEL	445.22
5	1	COM-5254	M2 TURNBUCKLE ROD	GRADE B7 ALLOY STEEL, MCMMASTER #93325A140	384.61
4	1	COM-5250	M2 SPIDER BRACKET	AISI 1040 CF STEEL PLATE	3098.93
3	1	B18.2.4.1M - Hex nut, Style 1, M20 x 2.5 --D-N			
2	1	B18.22M - Plain washer, 20 mm, narrow			
1	1	B18.2.4.5M - Hex jam nut, M20 x 2.5 --D-N			



DO NOT SCALE DRAWING

<p align="center">COPYRIGHT</p> <p>THIS DOCUMENT & ENCLOSED PROPRIETARY INFORMATION REMAINS THE PROPERTY OF EOS TECHNOLOGIES, INC. THE INTELLECTUAL PROPERTY AND INFORMATION HEREIN MAY NOT BE COPIED NOR DISCLOSED WITHOUT WRITTEN CONSENT OF EOS TECHNOLOGIES, INC. MANAGEMENT</p>	<p>UNLESS OTHERWISE SPECIFIED: DIMENSIONS ARE IN MILLIMETERS X.X = ±0.25MM X.XX = ±0.10MM ANGLES = ±0.5°</p> <p>ROUNDS AND FILLETS ARE R3.0 BREAK ALL SHARP EDGES 0.25MM X 0.25MM</p>	<p>WELDS ARE: MAX SIZE FILLET OR FULL PENETRATION GROOVE WELD AS APPROPRIATE.</p> <p>ALL WELDS ARE CONTINUOUS</p> <p>NEAREST NOMINAL STOCK SIZE MAY BE SUBSTITUTED UPON APPROVAL.</p> <p>INDICATED MACHINED SURFACES </p>	DESIGN	G. J. PENTLAND	DATE	3/2/04	<p align="center">EOS TECHNOLOGIES, INC. 3160 E. TRANSCON WAY, SUITE 180, TUCSON, AZ 85706 PH: (520) 624-6399</p>				
			DRAWN	K. CLARKE	DATE	5/16/05		TITLE	M2 SPIDER ASSEMBLY		
			CHECKED	K. WASMER	DATE	3/4/05		DRAWING NO.	ASY-5249		
APPROVED	G.J. PENTLAND	DATE	3/4/05	SCALE	1:5	STATUS	Released	REVISION	REL-02	SHEET SIZE	A1
				SHEET		1 OF 1					