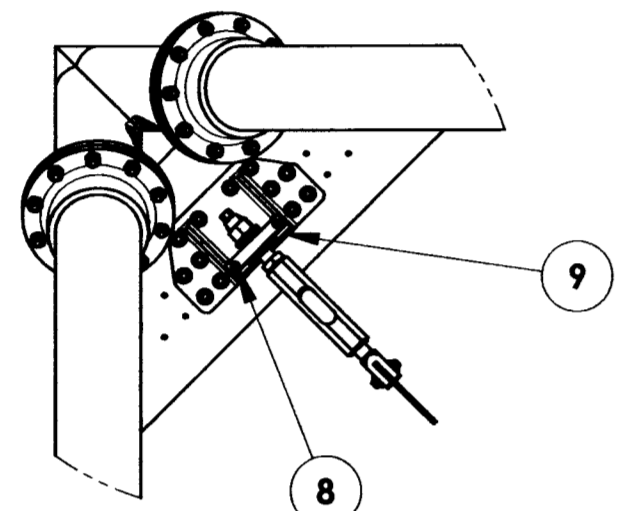
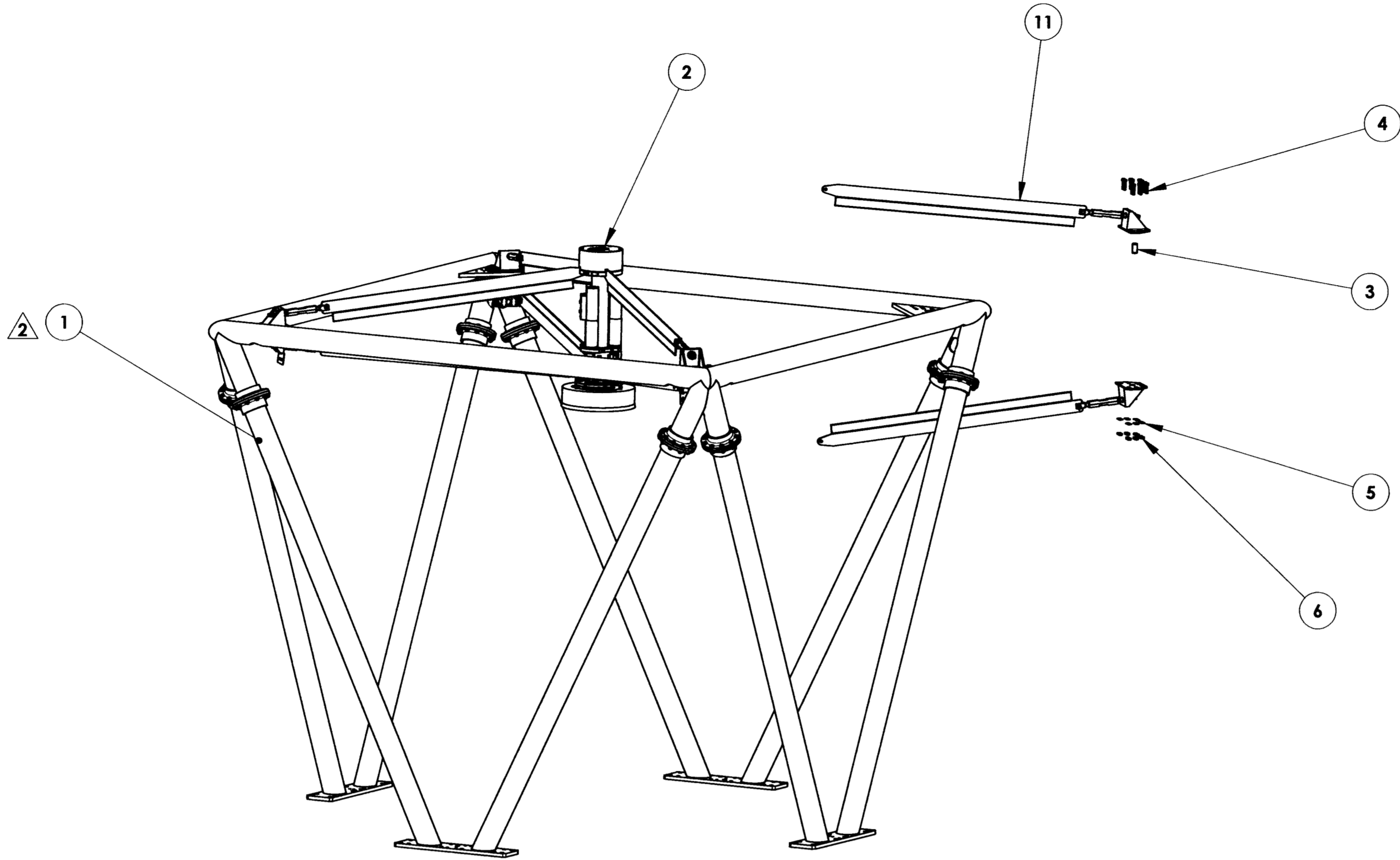
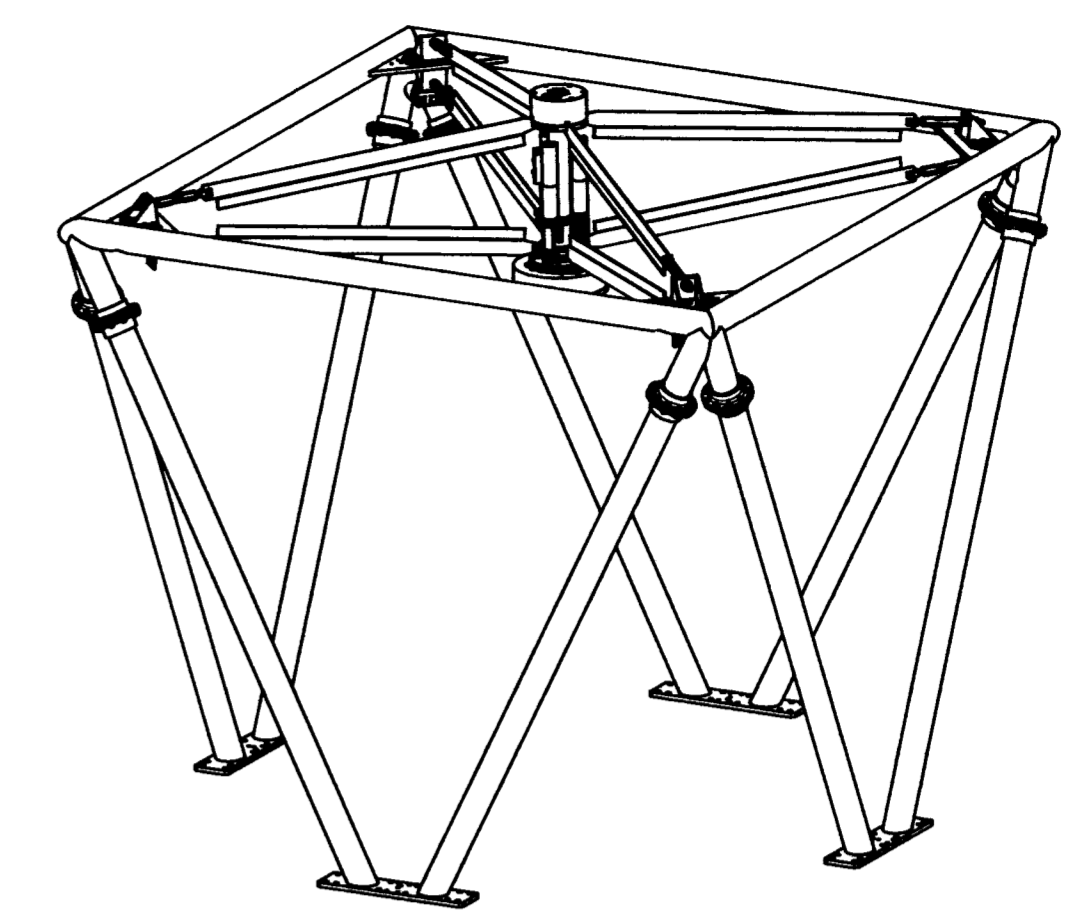


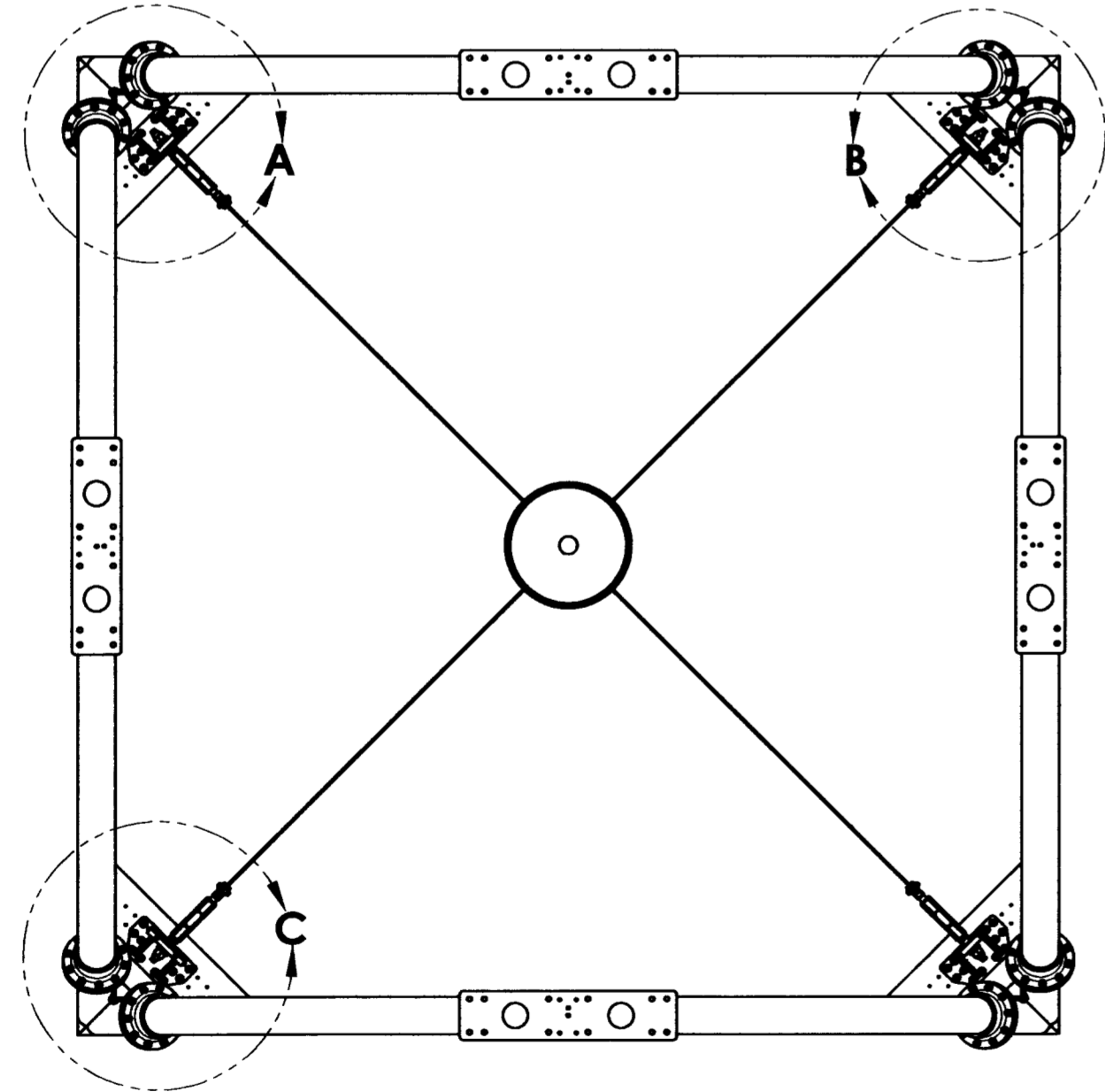
REV.	DATE	DESCRIPTION	CHKD	APPVD	ZONE
1	3/4/2005	INITIAL RELEASE	KW	GP	
2	6/13/2007	REVISED PER ECO-0956	P	W	

DRAWING NO. ASY-5279	REVISION REL-02
PROJECT CODE: LICK-51	
REQUIRED PER TELESCOPE: 1	
MATERIAL: PER COMPONENT	
CONDITION: PER COMPONENT	
SURFACE FINISH: PER COMPONENT	
FINISH COLOR: PER COMPONENT	
APPROXIMATE MASS: 3391171.13 gm	
REFERENCE DOCUMENTS:	

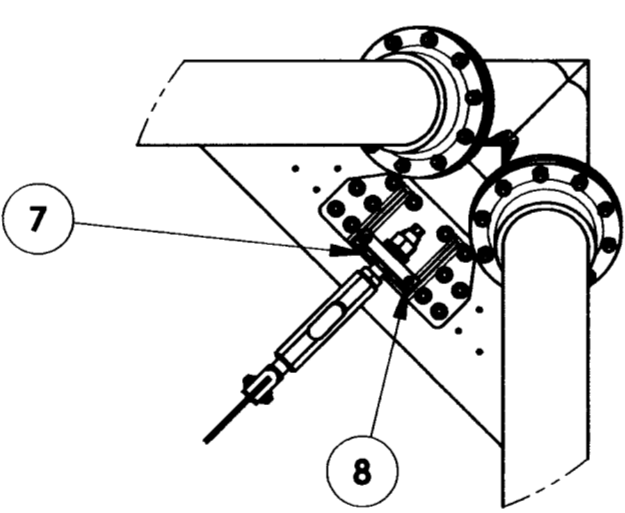
Controlled Document
Confirm revision before using



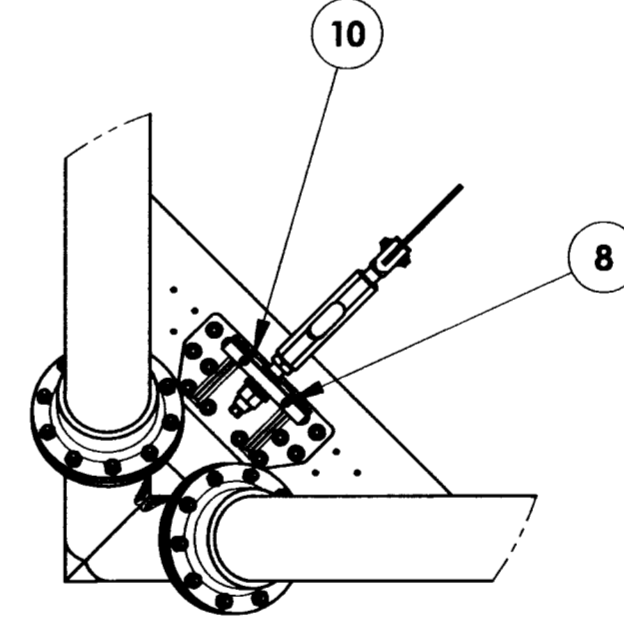
DETAIL A
SCALE 1 : 10



BOTTOM VIEW
SCALE 1:20

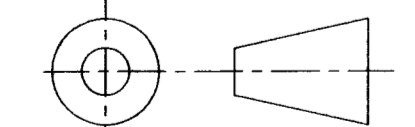


DETAIL B
SCALE 1 : 10



DETAIL C
SCALE 1 : 10

ITEM NO.	Default/QTY.	PART NUMBER	DESCRIPTION	Material	Weight
11	8	ASY-5249	M2 SPIDER ASSEMBLY	PER COMPONENT	8274.65
10	1	COM-5298	BRACKET 3 - M2 CABLING	6061-T6 ALUMINUM, 1/16" SHEET	43.95
9	1	COM-5297	BRACKET 2 - M2 CABLING	6061-T6 ALUMINUM, 1/16" SHEET	34.43
8	6	B18.3.1M - 6 x 1.0 x 12 Hex SHCS -- 12NHX			
7	1	COM-5296	BRACKET 1 - M2 CABLING	6061-T6 ALUMINUM, 1/16" SHEET	31.93
6	48	B18.2.4.1M - Hex nut, Style 1, M10 x 1.5, with 16mm WAF --D-N			
5	48	B18.2.2M - Plain washer, 10 mm, narrow			
4	48	B18.3.1M - 10 x 1.5 x 45 Hex SHCS -- 45NHX			
3	4	Parallel Pin ISO 2338 - 25 h8 x 50 - St			
2	1	ASY-5201	M2 QS FOCUS ASSEMBLY	PER COMPONENT	93710.40094347
1	1	ASY-12411	UPPER TRUSS MODIFICATION ASSEMBLY	PER COMPONENT	1891649.30



DO NOT SCALE DRAWING

<p align="center">COPYRIGHT</p> <p>THIS DOCUMENT & ENCLOSED PROPRIETARY INFORMATION REMAINS THE PROPERTY OF EOS TECHNOLOGIES, INC. THE INTELLECTUAL PROPERTY AND INFORMATION HEREIN MAY NOT BE COPIED NOR DISCLOSED WITHOUT WRITTEN CONSENT OF EOS TECHNOLOGIES, INC. MANAGEMENT</p>	<p>UNLESS OTHERWISE SPECIFIED:</p> <p>DIMENSIONS ARE IN MILLIMETERS</p> <p>X.X = ±0.25MM</p> <p>X.XX = ±0.10MM</p> <p>ANGLES = ±0.5°</p> <p>ROUNDS AND FILLETS ARE R3.0</p> <p>BREAK ALL SHARP EDGES 0.25MM X 0.25MM</p>	<p>WELDS ARE: MAX SIZE FILLET OR FULL PENETRATION GROOVE WELD AS APPROPRIATE.</p> <p>ALL WELDS ARE CONTINUOUS</p> <p>NEAREST NOMINAL STOCK SIZE MAY BE SUBSTITUTED UPON APPROVAL.</p> <p>INDICATED MACHINED SURFACES 3.2</p>	DESIGN	G. J. PENTLAND	DATE	3/16/04	<p>EOS TECHNOLOGIES, INC. 3160 E. TRANSCON WAY, SUITE 180, TUCSON, AZ 85706 PH: (520) 624-6399</p>		
			DRAWN	K. CLARKE	DATE	2/16/05		TITLE	UPPER TRUSS ASSEMBLY
			CHECKED	K. WASMER	DATE	3-4-2005		DRAWING NO.	ASY-5279
APPROVED	G. PENTLAND	DATE	3-4-2005	STATUS	Released	REVISION	REL-02	SHEET SIZE	A1
				SCALE	1:1	SHEET	1 OF 1		