

DRAWING NO. **ASY-5282** REVISION **REL-02**

PROJECT CODE: **LICK-51**

REQUIRED PER TELESCOPE: 4

MATERIAL: PER COMPONENT

CONDITION: PER COMPONENT

FINISH: PER COMPONENT

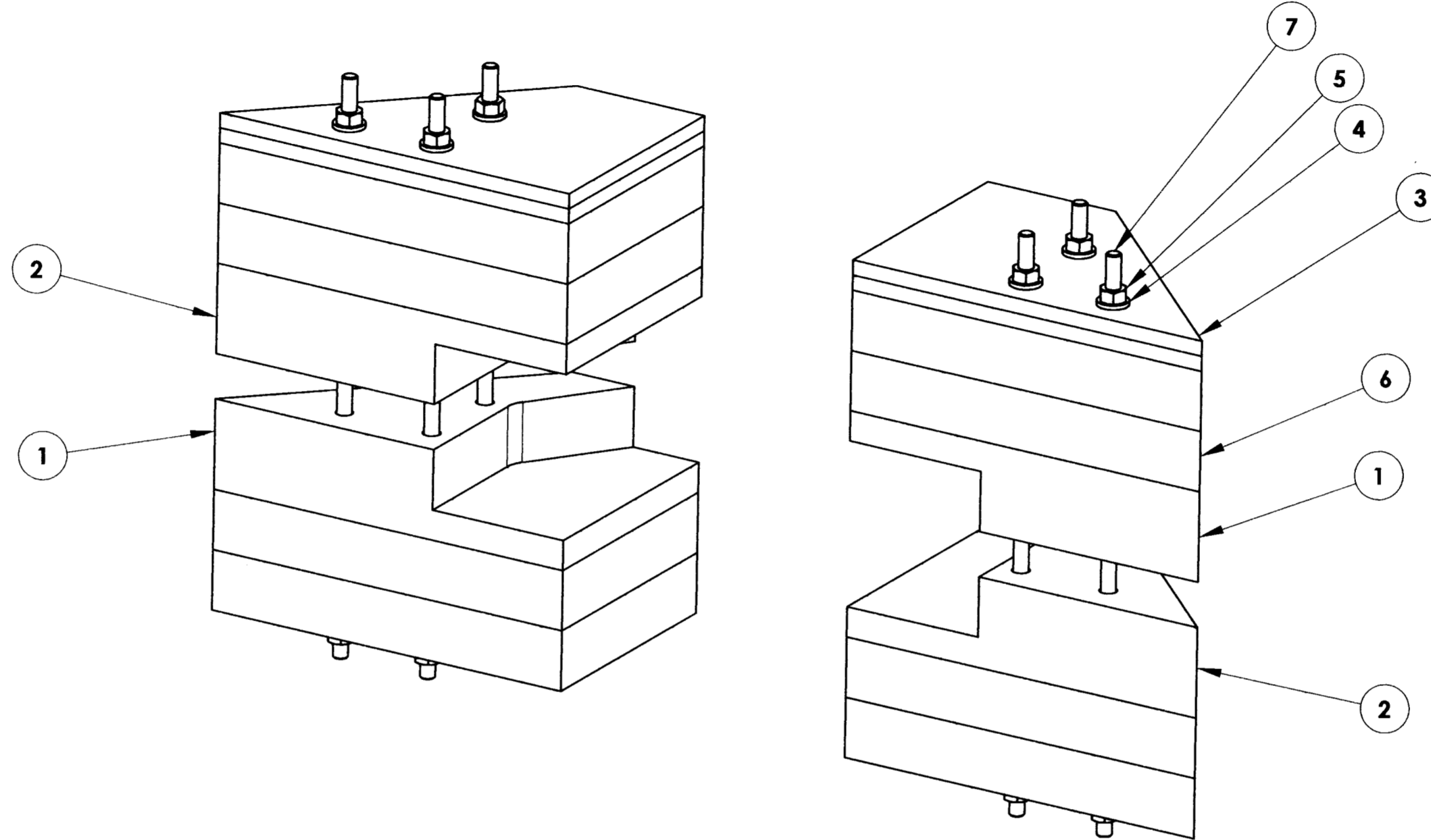
FINISH COLOR: PER COMPONENT

APPROXIMATE MASS: 28654.31 gm

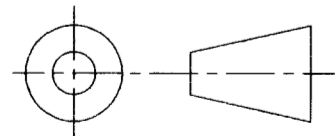
REFERENCE DOCUMENTS:

REV.	DATE	DESCRIPTION	CHK'D	APP'VD	ZONE
A	3/4/05	INITIAL RELEASE	KLW	GJP	
B	6/24/2008	CHANGED PER ECO-1155		KRA	

Controlled Document
Confirm revision before using



7	6	COM-13212	WEIGHT MOUNT STUD	LOW CARBON STEEL, MCM 98942A114	54.00
6	8	COM-13209	TUBE END TRIM WEIGHT, 1" THICK	AISI 1018	2174.77
5	12	B18.2.4.1M - Hex nut, Style 1, M6 x 1 --D-N			
4	12	B18.22M - Plain washer, 6 mm, narrow	M6 FLAT WASHER ZINC PLATED ALLOY STEEL	ZINC PLATED STEEL	1
3	4	COM-5285	TUBE END TRIM WEIGHT	AISI 1015 STEEL PLATE, 1/4" THICK	547.95
2	2	COM-5284	TUBE END WEIGHT B	AISI 1020 STEEL PLATE, 1 1/2" THICK	2204.53
1	2	COM-5283	TUBE END WEIGHT A	AISI 1020 STEEL, 1 1/2" THICK	2204.53
ITEM NO.	QTY.	PART NUMBER	DESCRIPTION	Material	Weight



DO NOT SCALE DRAWING

COPYRIGHT
 THIS DOCUMENT & ENCLOSED PROPRIETARY INFORMATION REMAINS THE PROPERTY OF EOS TECHNOLOGIES, INC. THE INTELLECTUAL PROPERTY AND INFORMATION HEREIN MAY NOT BE COPIED NOR DISCLOSED WITHOUT WRITTEN CONSENT OF EOS TECHNOLOGIES, INC. MANAGEMENT

UNLESS OTHERWISE SPECIFIED:
 DIMENSIONS ARE IN MILLIMETERS
 TOLERANCES:
 X.X = ±0.25MM
 X.XX = ±0.10MM
 ANGLES = ±0.5°
 ROUNDS AND FILLETS ARE R3.0
 BREAK ALL SHARP EDGES
 0.25MM X 0.25MM

WELDS ARE:
 MAX SIZE FILLET OR
 FULL PENETRATION GROOVE
 AS APPROPRIATE.
 ALL WELDS ARE CONTINUOUS
 NEAREST NOMINAL STOCK SIZE
 MAY BE SUBSTITUTED.
 INDICATED MACHINED SURFACES

DESIGN	G. J. PENTLAND	DATE	3/18/04
DRAWN	K. CLARKE	DATE	2/16/05
CHECKED	K. WASMER	DATE	3/4/05
APPROVED	G. PENTLAND	DATE	3/4/05

EOS TECHNOLOGIES, INC.
 3160 E. TRANSCON WAY, SUITE 180, TUCSON, AZ 85706 PH: (520) 624-6399

TUBE END WEIGHT ASSEMBLY

DRAWING NO. **ASY-5282**

STATUS	Released	REVISION	REL-02	SHEET SIZE	A2
SHEET	1 OF 1	SCALE	1:2		