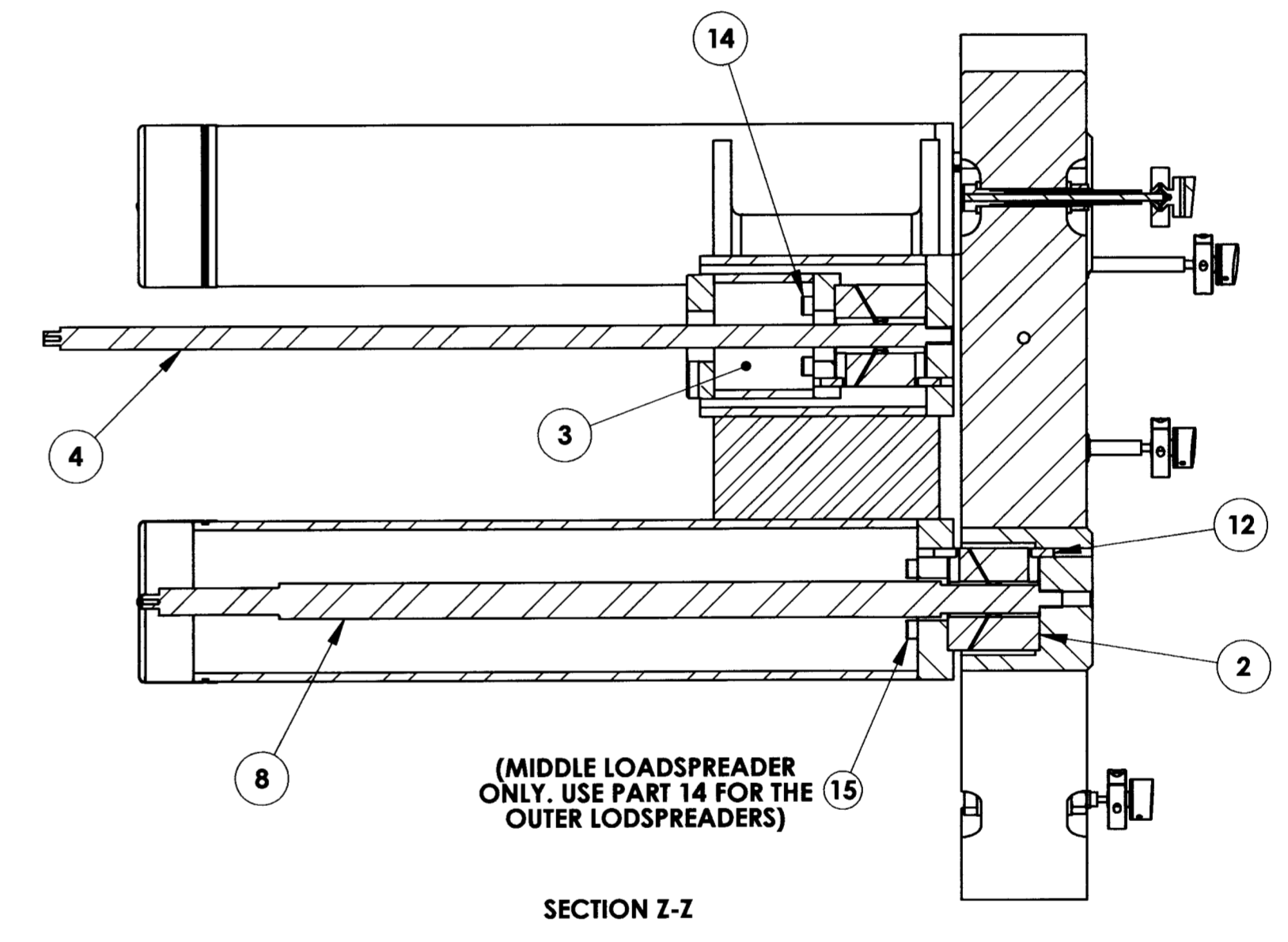
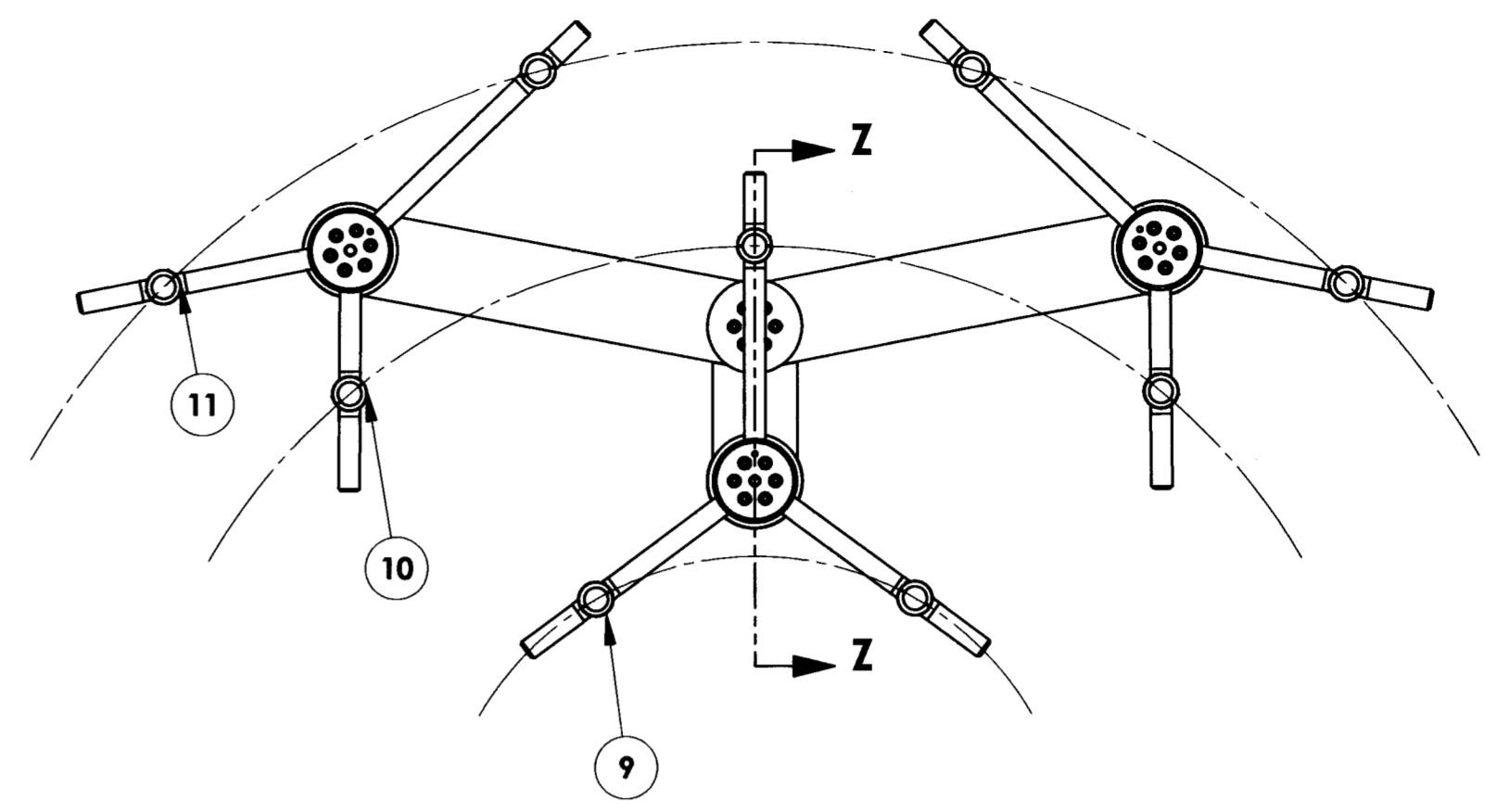
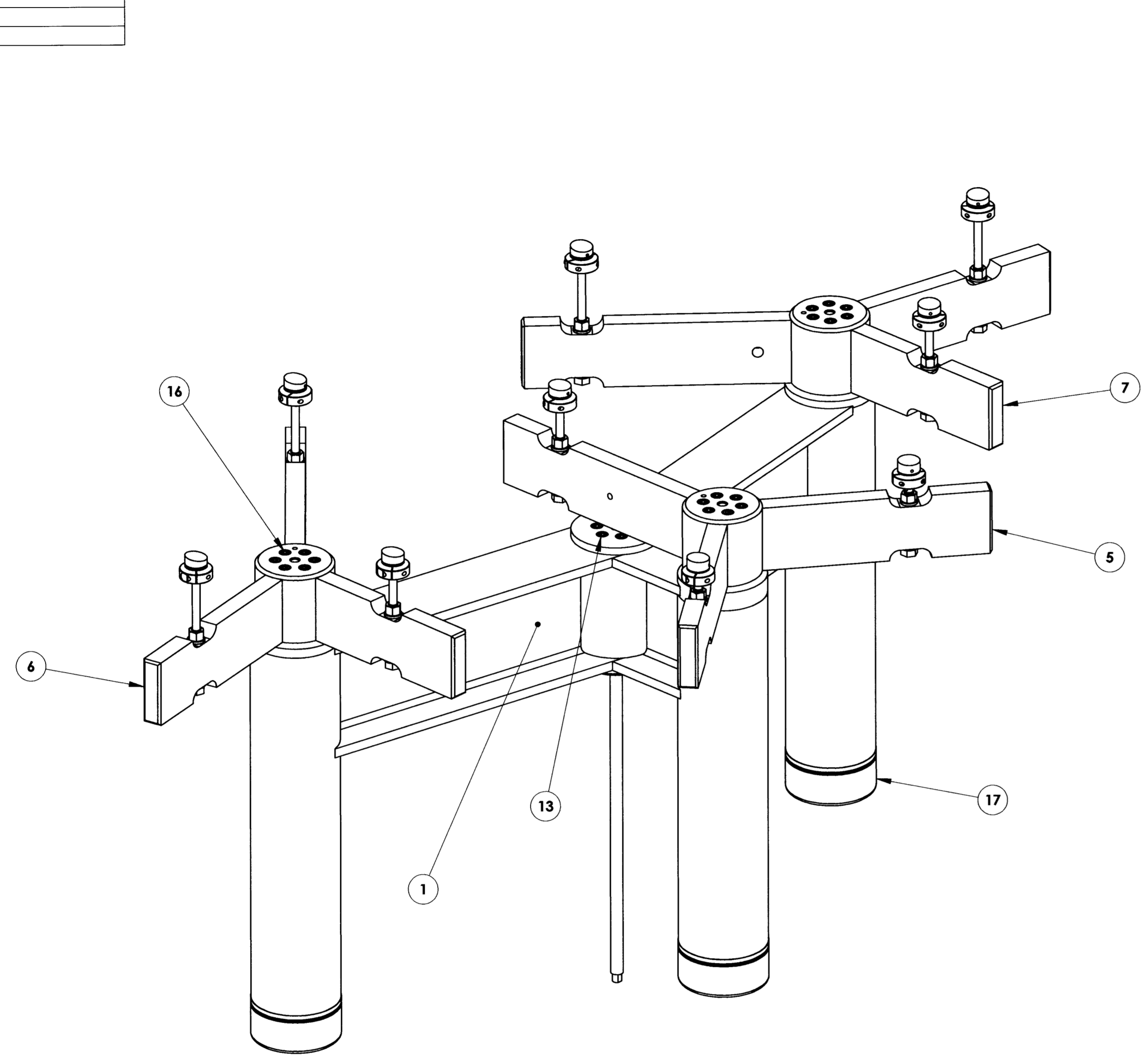


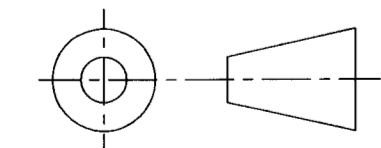
DRAWING NO.	REVISION
ASY-5313	REL-02
PROJECT CODE:	LICK-51
REQUIRED PER TELESCOPE:	3 ASSEMBLIES TOTAL PER TELESCOPE
MATERIAL:	N/A
CONDITION:	N/A
SURFACE FINISH:	N/A
FINISH COLOR:	N/A
APPROXIMATE MASS:	130723.01 gm

REV.	DATE	DESCRIPTION	CHKD	APPVD	ZONE
1	11/10/04	INITIAL RELEASE	KLW	GJP	
2	12/2/2004	ECO 0264	KLW	<i>ESJ</i>	

Controlled Document
Confirm revision before using



ITEM NO.	Default/ QTY.	PART NUMBER	DESCRIPTION	Material	Weight
17	3	Warping Harness Plastic Cover	WARPING HARNESS PLASTIC COVER	0.5 THICK PLASTIC	15
16	18	DIN 912 M8 x 40 --- 40N	M8x40 SHCS	316 STAINLESS STEEL	11
15	6	DIN 912 M8 x 30 --- 30N	M8x30 SHCS	316 STAINLESS STEEL	9
14	6	DIN 912 M8 x 25 --- 25N	M8x25 SHCS	316 STAINLESS STEEL	8
13	18	DIN 912 M8 x 20 --- 20N	M8x20 SHCS	316 STAINLESS STEEL	7
12	8	Parallel Pin ISO 2338 - 6 h8 x 16 - A1	∅6.0 mm DOWEL PIN	316 STAINLESS STEEL	3
11	4	ASY-5241	NOODLE FLEXURE ASSEMBLY, TYPE III	N/A	323
10	3	ASY-5236	NOODLE FLEXURE ASSEMBLY, TYPE II	N/A	307
9	2	ASY-5168	NOODLE FLEXURE ASSEMBLY, TYPE I	N/A	297
8	3	COM-5223	LOADSPREADER COUNTERBALANCE ROD	AISI304, 1" ROD STOCK	2289
7	1	COM-5146	LH OUTER LOADSPREADER - MACHINING	AISI 304	18224
6	1	COM-5144	RH OUTER LOADSPREADER - MACHINING	AISI 304	18224
5	1	COM-5130	MIDDLE LOADSPREADER - MACHINING	AISI 304	19094
4	1	COM-5314	LOADSPREADER COUNTERBALANCE ROD	AISI 304, 5/8" ROD STOCK	995
3	1	COM-5264	LOADSPREADER MOUNTING BRACKET STANDOFF - MACHINING	AISI 304	2302
2	4	COM-5149	M1 LOADSPREADER FLEXURE	17-4 PH STEEL, H900	1635
1	1	COM-5248	LOADSPREADER MOUNTING BRACKET - MACHINING	AISI 304	54685
				Material	Weight



DO NOT SCALE DRAWING

COPYRIGHT
THIS DOCUMENT & ENCLOSED PROPRIETARY INFORMATION REMAINS THE PROPERTY OF EOS TECHNOLOGIES, INC. THE INTELLECTUAL PROPERTY AND INFORMATION HEREIN MAY NOT BE COPIED NOR DISCLOSED WITHOUT WRITTEN CONSENT OF EOS TECHNOLOGIES, INC. MANAGEMENT

UNLESS OTHERWISE SPECIFIED:
DIMENSIONS ARE IN MILLIMETERS
X.X = ±0.25MM
X.XX = ±0.10MM
ANGLES = ±0.5°
ROUNDS AND FILLETS ARE R3.0
BREAK ALL SHARP EDGES 0.25MM X 0.25MM

WELDS ARE: MAX SIZE FILLET OR FULL PENETRATION GROOVE WELD AS APPROPRIATE.
ALL WELDS ARE CONTINUOUS
NEAREST NOMINAL STOCK SIZE MAY BE SUBSTITUTED UPON APPROVAL.
INDICATED MACHINED SURFACES

DESIGN	M. NICKERSON	DATE	11/24/03
DRAWN	J. CATONE	DATE	3/29/04
CHECKED	KEVIN WASMER	DATE	11/10/04
APPROVED	G J PENTLAND	DATE	11/10/04

EOS TECHNOLOGIES, INCORPORATED
925 W. GRANT RD, TUCSON, AZ 85705 PH: (520) 624-6399 www.eostech.com

LOADSPREADER BRACKET ASSEMBLY

DRAWING NO. **ASY-5313** STATUS Released REVISION **REL-02** SHEET SIZE **A1**

SCALE 1:4 SHEET 1 OF 1