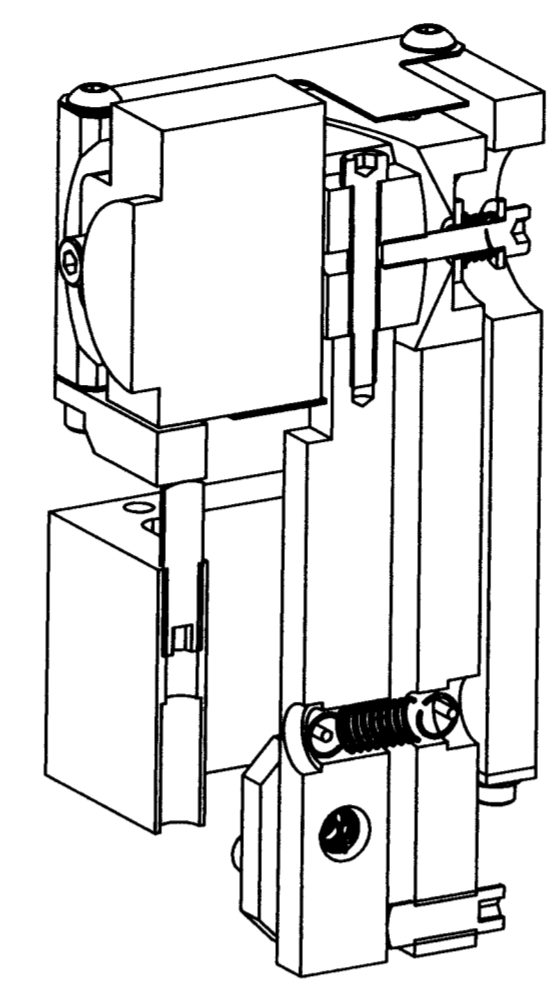
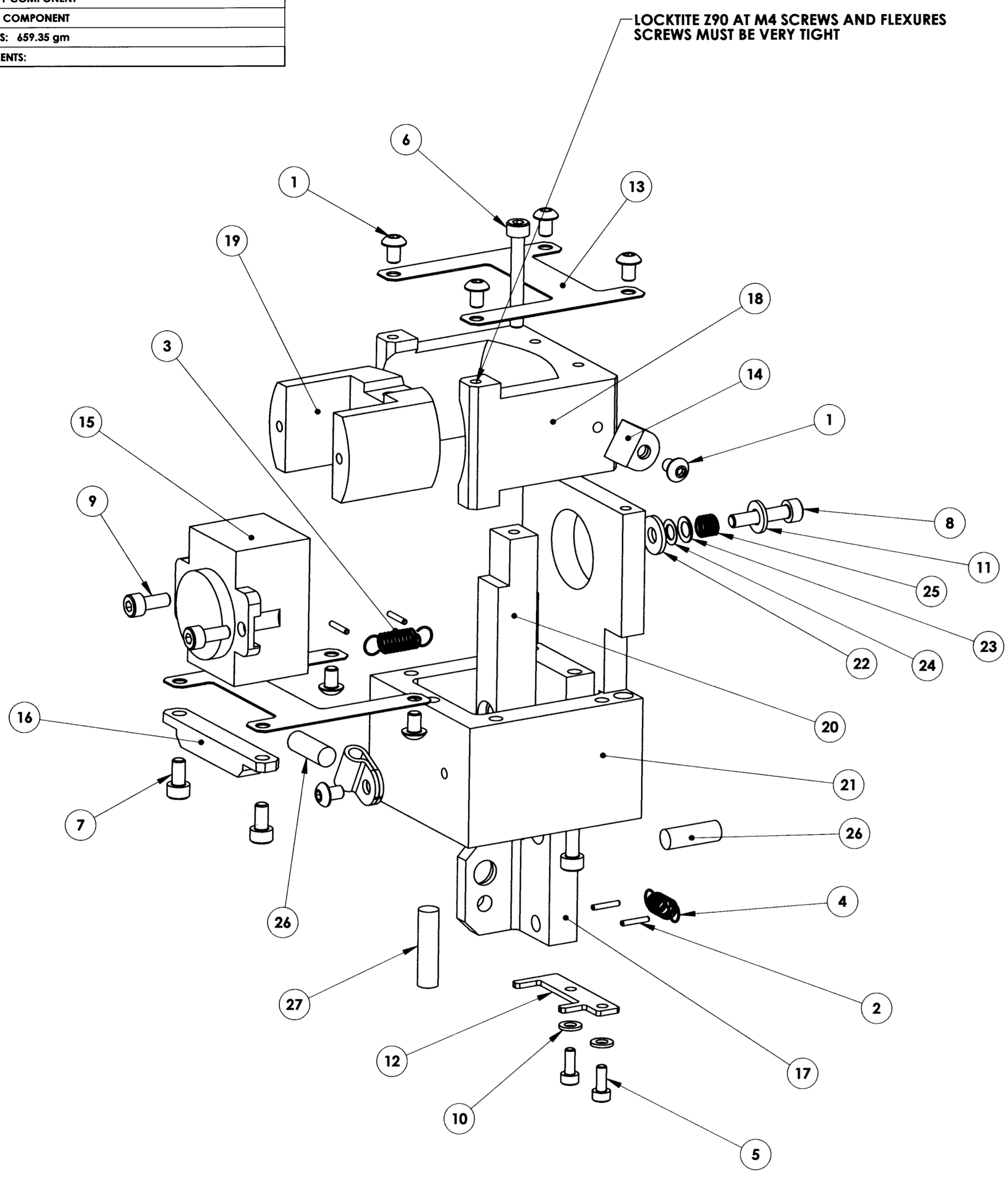


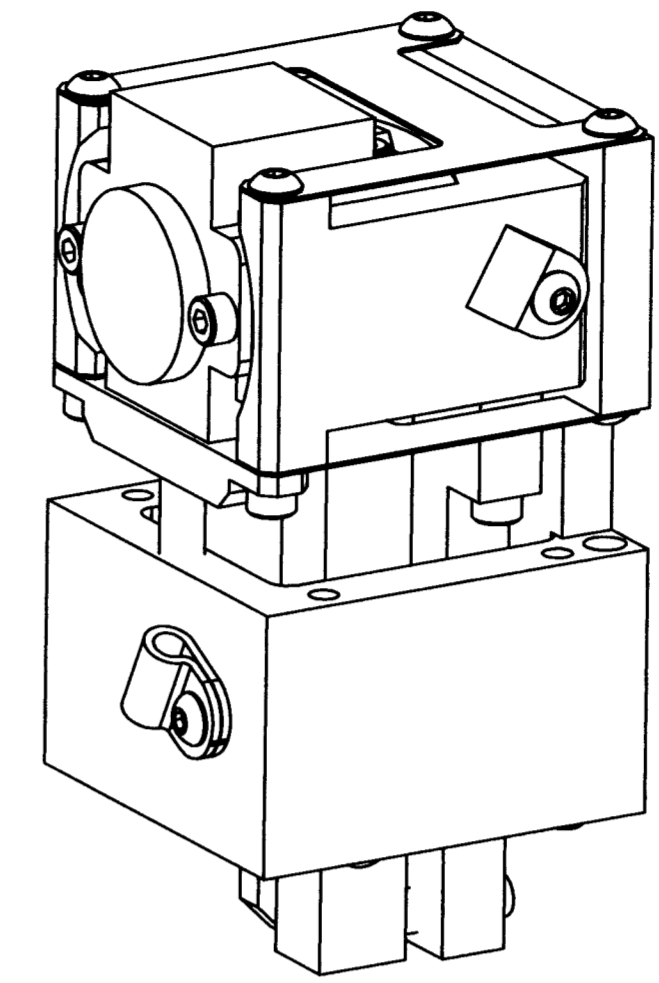
DRAWING NO.	REVISION
ASY-5380	REL-01
PROJECT CODE:	LICK-51
REQUIRED PER TELESCOPE:	1 PER ENCODER ASSY
MATERIAL:	BY COMPONENT
CONDITION:	BY COMPONENT
SURFACE FINISH:	BY COMPONENT
FINISH COLOR:	BY COMPONENT
APPROXIMATE MASS:	659.35 gm
REFERENCE DOCUMENTS:	

REV.	DATE	DESCRIPTION	CHKD	APPVD	ZONE
1	2/9/2005	INITIAL RELEASE	KLW	JTP	

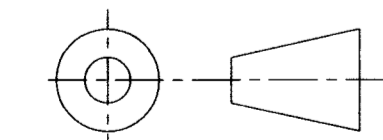
Controlled Document
Confirm revision before using



SECTION VIEW



ITEM NO.	Default/QTY.	PART NUMBER	DESCRIPTION	Material	Weight
27	1	1-4-80x1BallPlunger	THORLABS #F255S-100		
26	2	SocketSetBallPoint	1/4-80 X 3/4 HEX ADJUST SCREW		
25	1	spring_b_mcmaster94340k38_5mm			
24	1	SphWasherMaleM4	M4 SPHERICAL WASHER - MALE		
23	1	SphWasherFemaleM4	M4 SPHERICAL WASHER - FEMALE		
22	1	B18.22M - Plain washer, 4 mm, regular		ZINC PLATED ALLOY STEEL	3
21	1	COM-5388	ENCODER MOUNT BRACKET	6061-T6 ALUMINUM	241.31
20	1	COM-5387	ENCODER TANGENT ARM	6061-T6 ALUMINUM	36.40
19	1	COM-5386	ENCODER SPHERICAL BRACKET	6061-T6 ALUMINUM	70.35
18	1	COM-5385	ENCODER CONICAL SEAT	6061-T6 ALUMINUM	89.91
17	1	COM-5384	ENCODER ADJUSTER TOWER	6061-T6 ALUMINUM	57.04
16	1	COM-5383	ENCODER SEAT BRIDGE	6061-T6 ALUMINUM	7.71
15	1	encoder_head	HEIDENHAIN LIDA 10C ENCODER HEAD		
14	2	p-clip-e3			
13	2	COM-5382	ENCODER STIFF FLEXURE	AISI 304	7.11
12	1	COM-5381	ENCODER MOUNT GUIDE	Alloy Steel 1/16" THK PLATE	4.09
11	1	B18.22M - Plain washer, 4 mm, narrow			
10	2	B18.22M - Plain washer, 3 mm, narrow			
9	2	B18.3.1M - 4 x 0.7 x 10 Hex SHCS -- 10NHX			
8	1	B18.3.1M - 4 x 0.7 x 20 Hex SHCS -- 20NHX			
7	2	B18.3.1M - 4 x 0.7 x 8 Hex SHCS -- 8NHX			
6	3	B18.3.1M - 4 x 0.7 x 30 Hex SHCS -- 30NHX			
5	2	B18.3.1M - 3 x 0.5 x 8 Hex SHCS -- 8NHX			
4	1	EncHoldingSpring	SPEC#E0240-037-0620	.94 DIA. MUSIC WIRE	
3	1	EncHoldingSpring	SPEC#E0240-037-0620	.94 DIA. MUSIC WIRE	
2	4	DPM 0.0625x0.375			
1	8	B18.3.4M - 4 x 0.7 x 6 SBHCS --N			



DO NOT SCALE DRAWING

<p>COPYRIGHT</p> <p>THIS DOCUMENT & ENCLOSED PROPRIETARY INFORMATION REMAINS THE PROPERTY OF EOS TECHNOLOGIES, INC. THE INTELLECTUAL PROPERTY AND INFORMATION HEREIN MAY NOT BE COPIED NOR DISCLOSED WITHOUT WRITTEN CONSENT OF EOS TECHNOLOGIES, INC. MANAGEMENT</p>	<p>UNLESS OTHERWISE SPECIFIED:</p> <p>DIMENSIONS ARE IN MILLIMETERS</p> <p>X.X = ±0.25MM</p> <p>X.XX = ±0.10MM</p> <p>ANGLES = ±0.5°</p> <p>ROUNDS AND FILLETS ARE R3.0</p> <p>BREAK ALL SHARP EDGES 0.25MM X 0.25MM</p>	<p>WELDS ARE: MAX SIZE FILLET OR FULL PENETRATION GROOVE WELD AS APPROPRIATE.</p> <p>ALL WELDS ARE CONTINUOUS</p> <p>NEAREST NOMINAL STOCK SIZE MAY BE SUBSTITUTED UPON APPROVAL.</p> <p>INDICATED MACHINED SURFACES 3.2</p>	DESIGN	TW	DATE	1-Jan-02	<p>EOS TECHNOLOGIES, INC.</p> <p>3160 E. TRANSCON WAY, SUITE 180, TUCSON, AZ 85706 PH: (520) 624-6399</p>			
			DRAWN	AML	DATE	13-Jan-04				
			CHECKED	<i>Karl Widmer</i>	DATE	2-10-05				
			APPROVED	<i>E J Penland</i>	DATE	FEB 10 2005				
<p>ENCODER TOWER ASSY</p>			DRAWING NO.	ASY-5380	STATUS	Released	REVISION	REL-01	SHEET SIZE	A1
			SCALE	1:1	SHEET	1 OF 2				