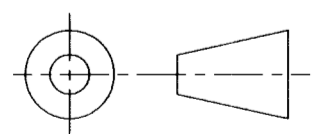
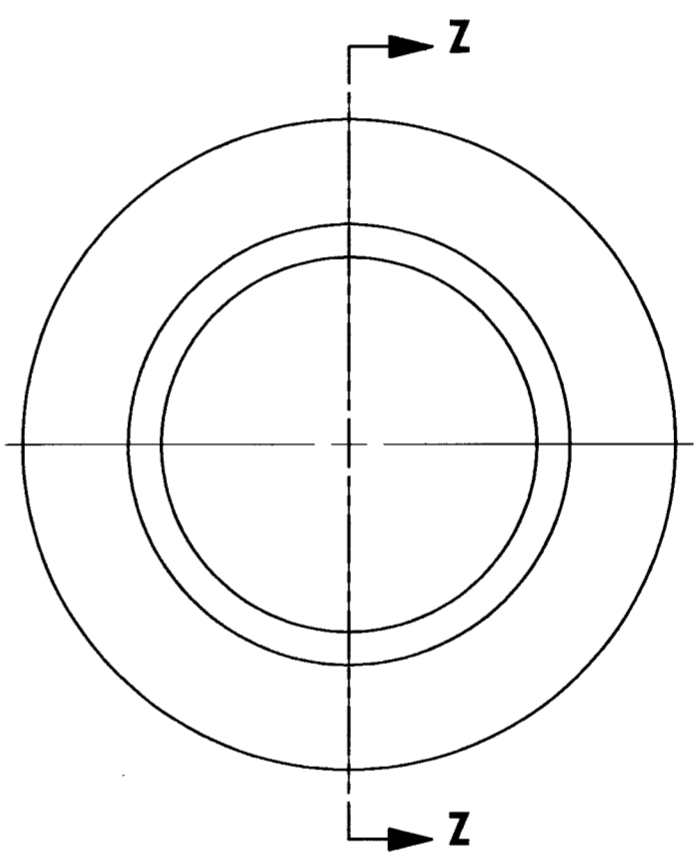
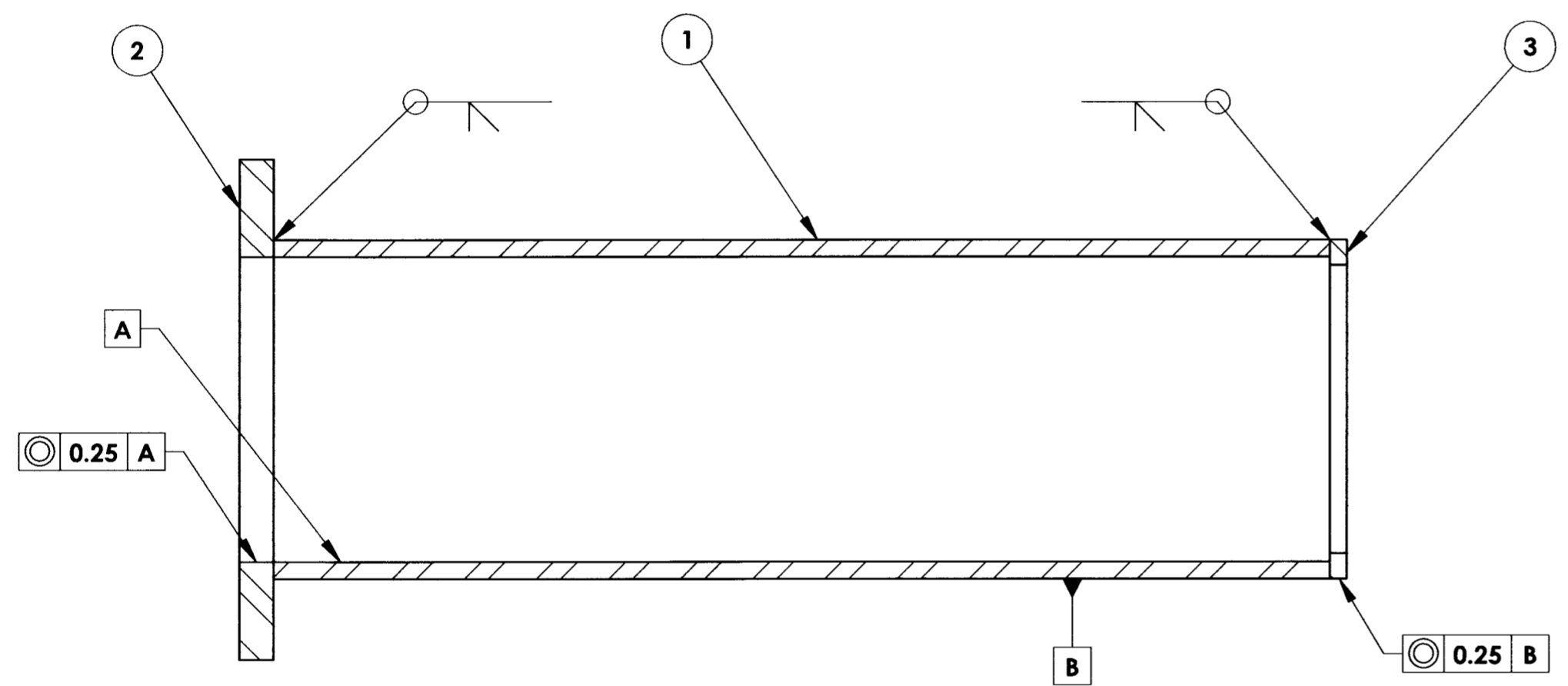
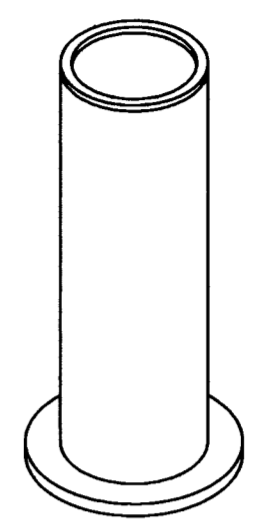


DRAWING NO. ASY-5452	REVISION REL-01
PROJECT CODE: LICK-51	
REQUIRED PER TELESCOPE: 1	
MATERIAL: 1018 STEEL	
CONDITION: AS SUPPLIED	
FINISH: AS SUPPLIED	
FINISH COLOR: AS SUPPLIED	
APPROXIMATE MASS: 74389 gm	
REFERENCE DOCUMENTS:	

REV.	DATE	DESCRIPTION	CHK'D	APPVD	ZONE
1	4/7/05	INITIAL RELEASE	ETA	SY	

Controlled Document
Confirm revision before using



DO NOT SCALE DRAWING

ITEM NO.	QTY.	PART NUMBER	DESCRIPTION	Material	Weight
3	1	COM-5451	M3 TUBE FLANGE, TYPE II	1018 STEEL, 1/2" PLATE	1390
2	1	COM-5450	M3 TUBE FLANGE, TYPE I	1018 STEEL, 1" PLATE	13750
1	1	COM-5449	M3 TUBE CYLINDER	1018 STEEL	59249

<p>COPYRIGHT</p> <p>THIS DOCUMENT & ENCLOSED PROPRIETARY INFORMATION REMAINS THE PROPERTY OF EOS TECHNOLOGIES, INC. THE INTELLECTUAL PROPERTY AND INFORMATION HEREIN MAY NOT BE COPIED NOR DISCLOSED WITHOUT WRITTEN CONSENT OF EOS TECHNOLOGIES, INC. MANAGEMENT</p>	<p>UNLESS OTHERWISE SPECIFIED:</p> <p>DIMENSIONS ARE IN MILLIMETERS</p> <p>TOLERANCES:</p> <p>X.X = ±0.25MM</p> <p>X.XX = ±0.10MM</p> <p>ANGLES = ±0.5°</p> <p>ROUNDS AND FILLETS ARE R3.0</p> <p>BREAK ALL SHARP EDGES 0.25MM X 0.25MM</p>	<p>WELDS ARE:</p> <p>MAX SIZE FILLET OR FULL PENETRATION GROOVE AS APPROPRIATE.</p> <p>ALL WELDS ARE CONTINUOUS</p> <p>NEAREST NOMINAL STOCK SIZE MAY BE SUBSTITUTED.</p> <p>INDICATED MACHINED SURFACES ✓ 3.2</p>	DESIGN M. NICKERSON	DATE 11/24/03	<p>EOS TECHNOLOGIES, INC.</p> <p>3160 E. TRANSCON WAY, SUITE 180, TUCSON, AZ 85706 PH: (520) 624-6399</p>				
			DRAWN K. WASMER	DATE 3/8/05		TITLE M3 TUBE - WELDING			
			CHECKED <i>S. J. [Signature]</i>	DATE 4/7/05		DRAWING NO. ASY-5452	STATUS Released	REVISION REL-01	SHEET SIZE A2
			APPROVED <i>G.J. [Signature]</i>	DATE 4/8/05		SHEET 1 OF 1	SCALE 1:4		