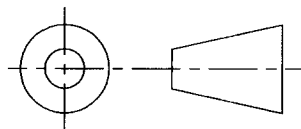
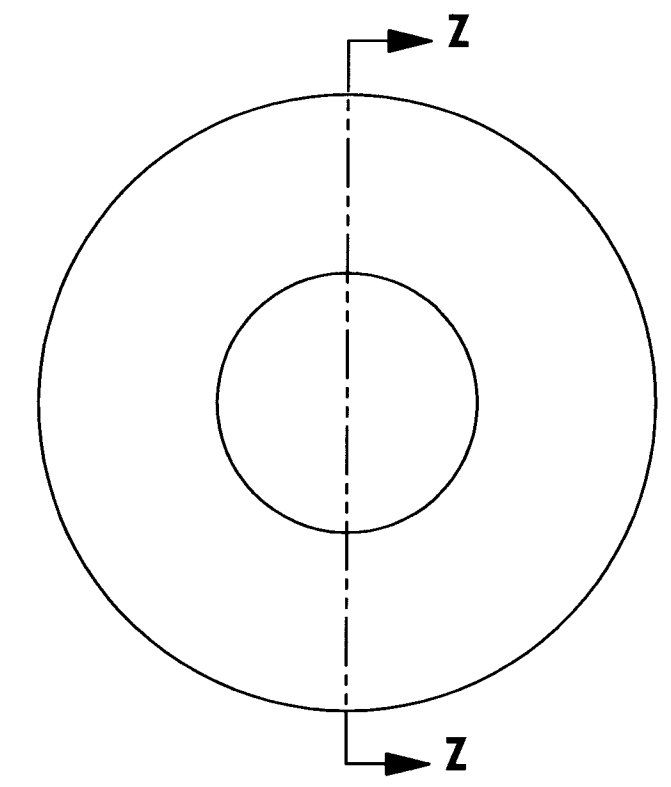
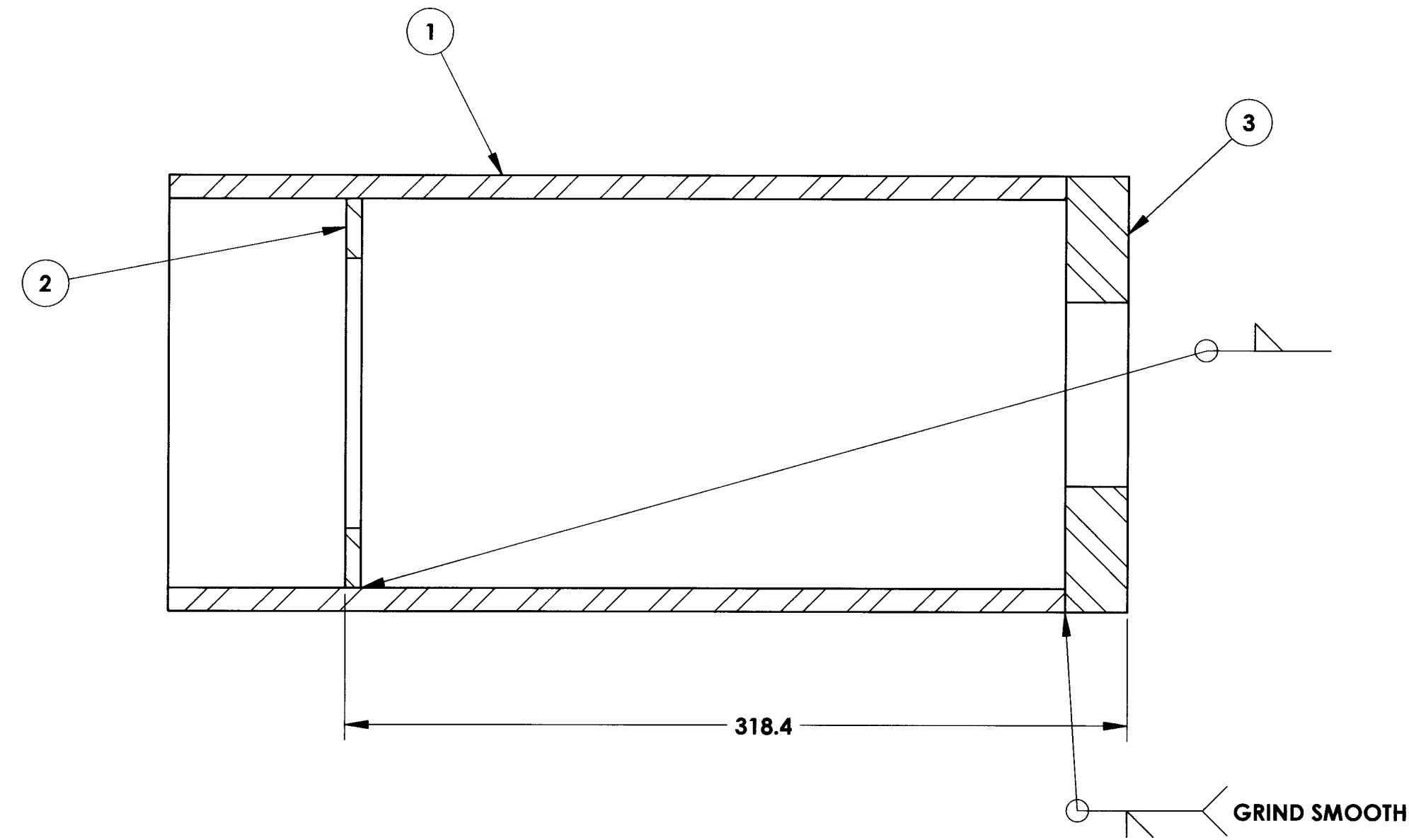
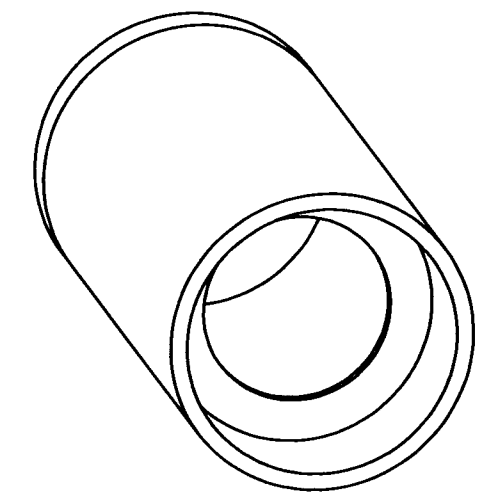


DRAWING NO. <b>ASY-5462</b>	REVISION <b>REL-01</b>
PROJECT CODE: <b>LICK-51</b>	
REQUIRED PER TELESCOPE: 3 TOTAL PER TELESCOPE	
MATERIAL: N/A	
CONDITION: N/A	
FINISH: N/A	
FINISH COLOR: N/A	
APPROXIMATE MASS: 19374 gm	

NOTES:  
 1) ALL CORNER JUNCTIONS MUST BE COMPLETELY FILLED.  
 2) ALL WELDS AND WELD PREPS SHALL BE COMPLETED IN ACCORDANCE WITH THE CURRENT AISC MANUAL OF STEEL CONSTRUCTION.

REV.	DATE	DESCRIPTION	CHK'D	APPV'D	ZONE
1	10/24/04	INITIAL RELEASE	KLW	SJP	

**Controlled Document**  
**Confirm revision before using**



DO NOT SCALE DRAWING

SECTION Z-Z

ITEM NO.	QTY.	PART NUMBER	DESCRIPTION	Material	Weight
3	1	COM-5464	MIRROR CELL LOAD CYLINDER STIFFENER PLATE	AISI 304 1" PLATE	4147
2	1	COM-5290	WARPING HARNESS BRACKET MOUNTING FLANGE	AISI 304 1/4" PLATE	523
1	1	COM-5463	MIRROR CELL OUTER LOAD CYLINDER	AISI 304 $\varnothing 7" \times 1/4"$ PIPE	14703

COPYRIGHT THIS DOCUMENT & ENCLOSED PROPRIETARY INFORMATION REMAINS THE PROPERTY OF EOS TECHNOLOGIES, INC. THE INTELLECTUAL PROPERTY AND INFORMATION HEREIN MAY NOT BE COPIED NOR DISCLOSED WITHOUT WRITTEN CONSENT OF EOS TECHNOLOGIES, INC. MANAGEMENT	UNLESS OTHERWISE SPECIFIED: DIMENSIONS ARE IN MILLIMETERS TOLERANCES: X.X = $\pm 0.25$ MM X.XX = $\pm 0.10$ MM ANGLES = $\pm 0.5^\circ$ ROUNDS AND FILLETS ARE R3.0 BREAK ALL SHARP EDGES 0.25MM X 0.25MM	WELDS ARE: MAX SIZE FILLET OR FULL PENETRATION GROOVE AS APPROPRIATE. ALL WELDS ARE CONTINUOUS NEAREST NOMINAL STOCK SIZE MAY BE SUBSTITUTED. INDICATED MACHINED SURFACES $\checkmark$ 3.2	DESIGN: M. NICKERSON DATE: 11/24/03 DRAWN: J. CATONE DATE: 4/12/04 CHECKED: <i>[Signature]</i> DATE: 10/29/04 APPROVED: <i>[Signature]</i> DATE: 10/29/04	<b>EOS</b> EOS TECHNOLOGIES, INC. 925 WEST GRANT ROAD - TUCSON - ARIZONA - 85705 - (520) 624-6399 TITLE: <b>MIRROR CELL OUTER LOAD CYLINDER ASSEMBLY - WELDMENT</b>	DRAWING NO. <b>ASY-5462</b> SCALE 1:1	STATUS: <del>Released</del> SHEET 1 OF 1	REVISION: <b>REL-01</b>	SHEET SIZE: <b>A2</b>
--	---	--	--	---	--	---	-------------------------	-----------------------