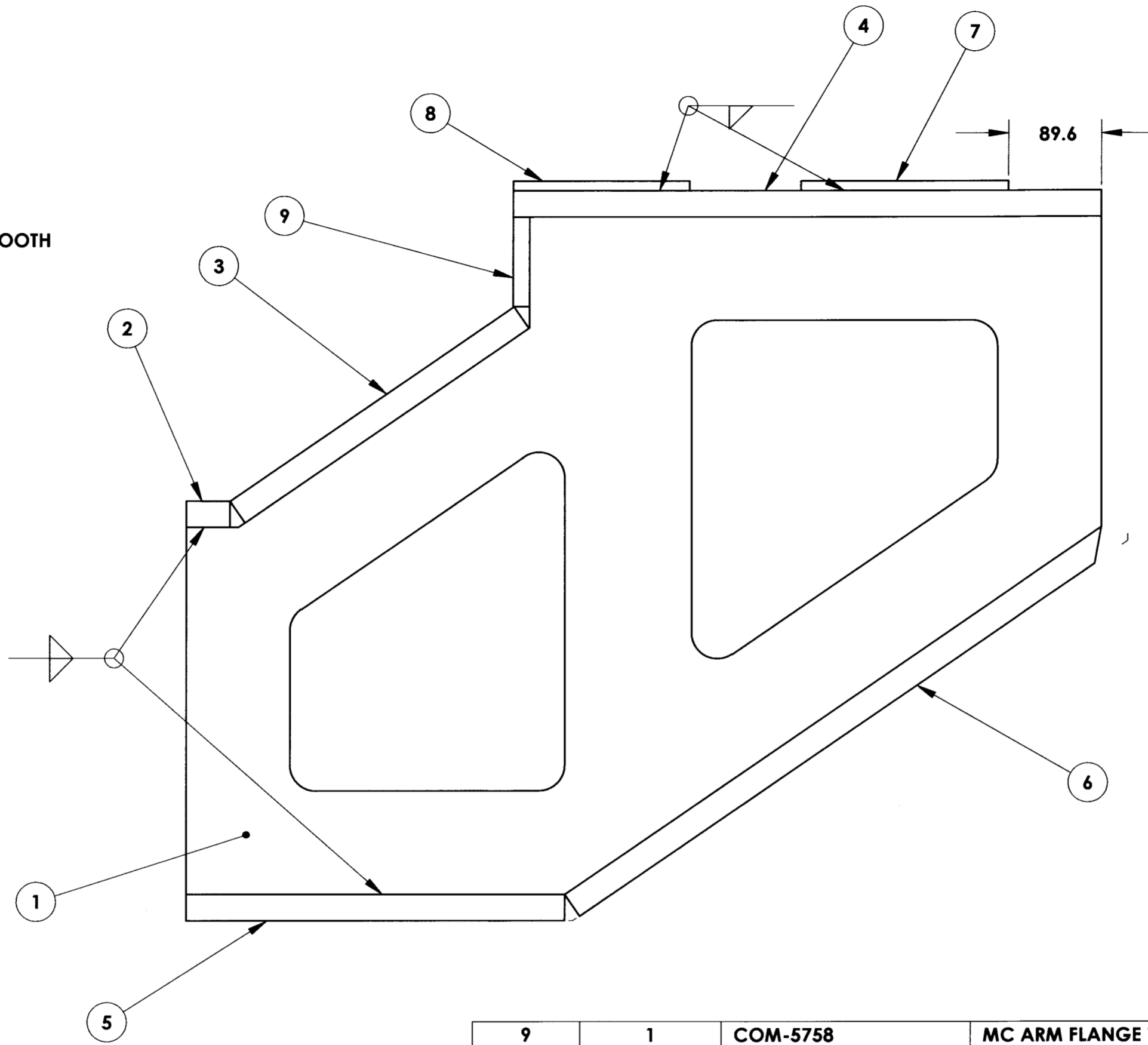
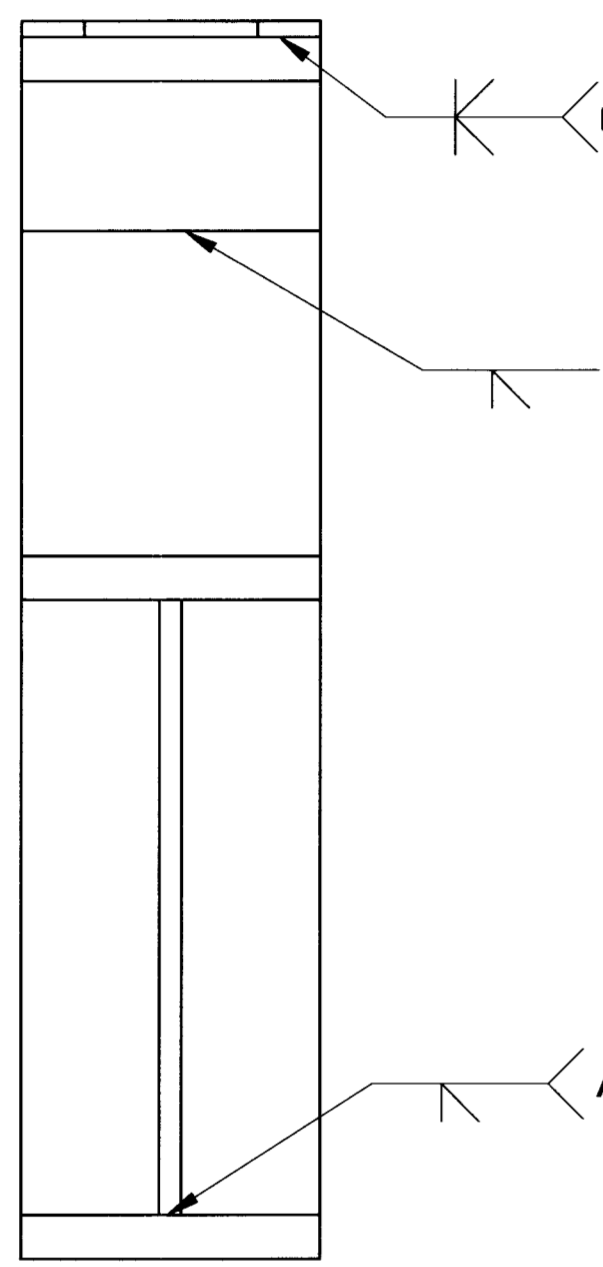
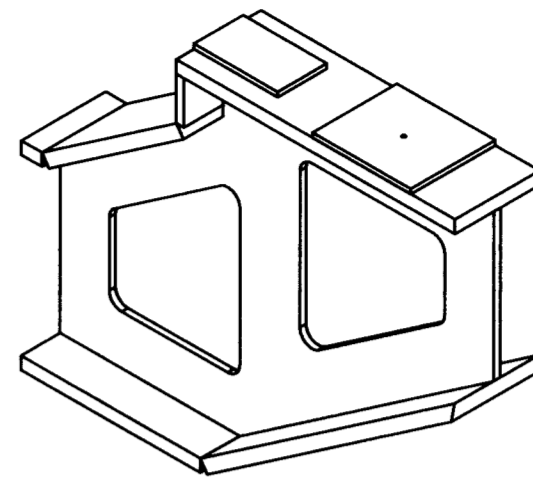


| | |
|---|---------------------------|
| DRAWING NO. ASY-5473 | REVISION REL-01 |
| PROJECT CODE: LICK-51 | |
| REQUIRED PER TELESCOPE: 2 TOTAL PER TELESCOPE | |
| MATERIAL: AISI 304 | |
| CONDITION: N/A | |
| FINISH: N/A | |
| FINISH COLOR: N/A | |
| APPROXIMATE MASS: 100703.02139731 gm | |

NOTES:
 1) ALL CORNER JUNCTIONS MUST BE COMPLETELY FILLED.
 2) ALL WELDS AND WELD PREPS SHALL BE COMPLETED IN ACCORDANCE WITH THE CURRENT AISC MANUAL OF STEEL CONSTRUCTION.

| REV. | DATE | DESCRIPTION | CHK'D | APPV'D | ZONE |
|------|----------|-----------------|-------|--------|------|
| 1 | 10/29/04 | INITIAL RELEASE | KLW | RP | |

Controlled Document
Confirm revision before using



| ITEM NO. | QTY. | PART NUMBER | DESCRIPTION | MATERIAL | WEIGHT (gm) |
|----------|------|-------------|-------------------------|---------------------|---------------|
| 9 | 1 | COM-5758 | MC ARM FLANGE 7 | AISI 304 5/8" PLATE | 1894 |
| 8 | 1 | COM-5524 | MC ARM MOUNTING PAD 2 | AISI 304 3/8" PLATE | 1295 |
| 7 | 1 | COM-5481 | MC ARM MOUNTING PAD | AISI 304 3/8" PLATE | 2619 |
| 6 | 1 | COM-5479 | MC ARM FLANGE, TYPE V | AISI 304 1" PLATE | 21475 |
| 5 | 1 | COM-5478 | MC ARM FLANGE, TYPE IV | AISI 304 1" PLATE | 12757 |
| 4 | 1 | COM-5477 | MC ARM FLANGE, TYPE III | AISI 304 1" PLATE | 19812.5080000 |
| 3 | 1 | COM-5476 | MC ARM FLANGE, TYPE II | AISI 304 1" PLATE | 11604 |
| 2 | 1 | COM-5475 | MC ARM FLANGE, TYPE I | AISI 304 1" PLATE | 1472 |
| 1 | 1 | COM-5474 | MC WEB 1 | AISI 304 1/2" PLATE | 27774 |

DO NOT SCALE DRAWING

| | | | | | | | |
|--|---|---|---|--------------------|--|---------------------------|-------------------------|
| COPYRIGHT THIS DOCUMENT & ENCLOSED PROPRIETARY INFORMATION REMAINS THE PROPERTY OF EOS TECHNOLOGIES, INC. THE INTELLECTUAL PROPERTY AND INFORMATION HEREIN MAY NOT BE COPIED NOR DISCLOSED WITHOUT WRITTEN CONSENT OF EOS TECHNOLOGIES, INC. MANAGEMENT | UNLESS OTHERWISE SPECIFIED: DIMENSIONS ARE IN MILLIMETERS TOLERANCES: X.X = ±0.25MM X.XX = ±0.10MM ANGLES = ±0.5° ROUNDS AND FILLETS ARE R3.0 BREAK ALL SHARP EDGES 0.25MM X 0.25MM | WELDS ARE: MAX SIZE FILLET OR FULL PENETRATION GROOVE AS APPROPRIATE. ALL WELDS ARE CONTINUOUS NEAREST NOMINAL STOCK SIZE MAY BE SUBSTITUTED. INDICATED MACHINED SURFACES | DESIGN M. NICKERSON DATE 11/24/03 | DATE 11/24/03 | EOS EOS TECHNOLOGIES, INC. 925 WEST GRANT ROAD - TUCSON - ARIZONA - 85705 - (520) 624-6399 | | |
| | DRAWN J. CATONE | DATE 2/15/04 | TITLE MC ARM - WELDMENT | | | | |
| | CHECKED <i>Kevin Watson</i> | DATE 10/24/04 | DRAWING NO. ASY-5473 | STATUS Released | | REVISION REL-01 | SHEET SIZE A2 |
| | APPROVED <i>[Signature]</i> | DATE 10/29/04 | SCALE 1:4 | SHEET 1 OF 1 | | | |