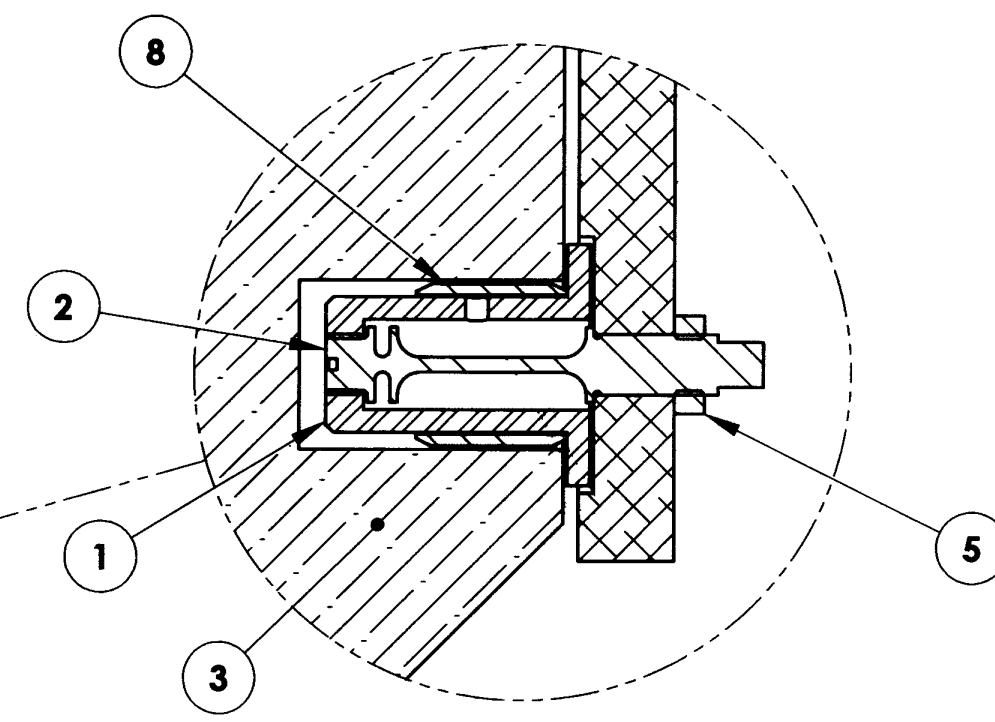
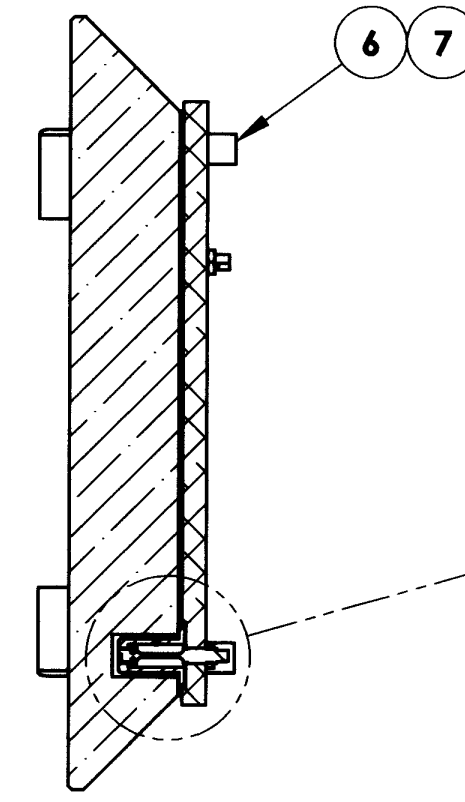
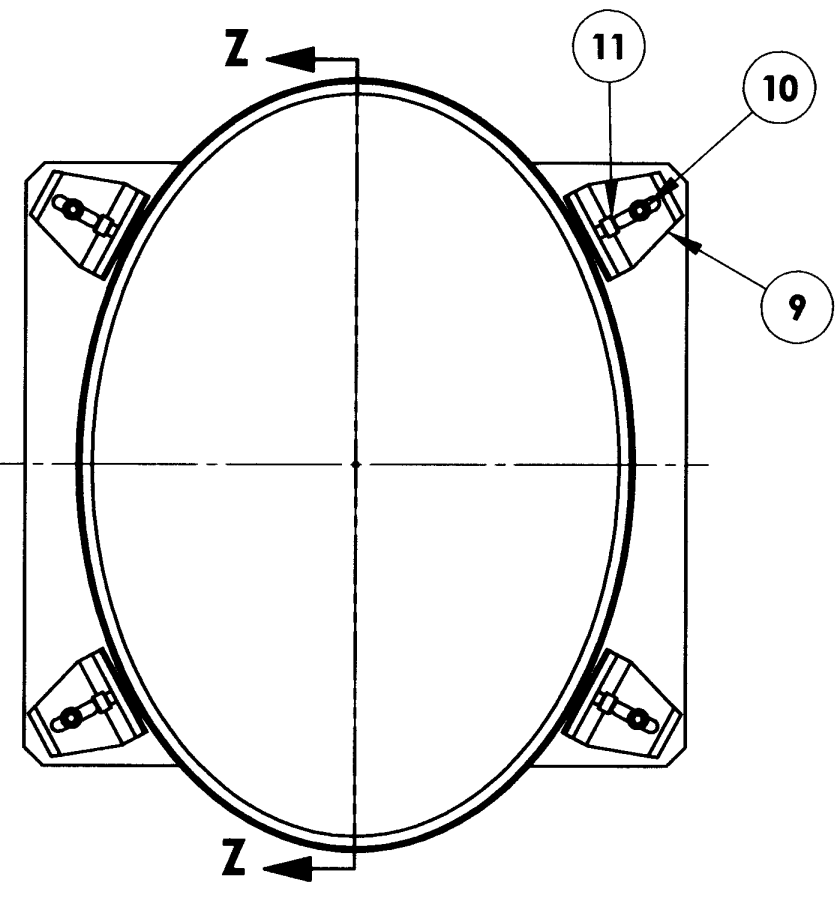
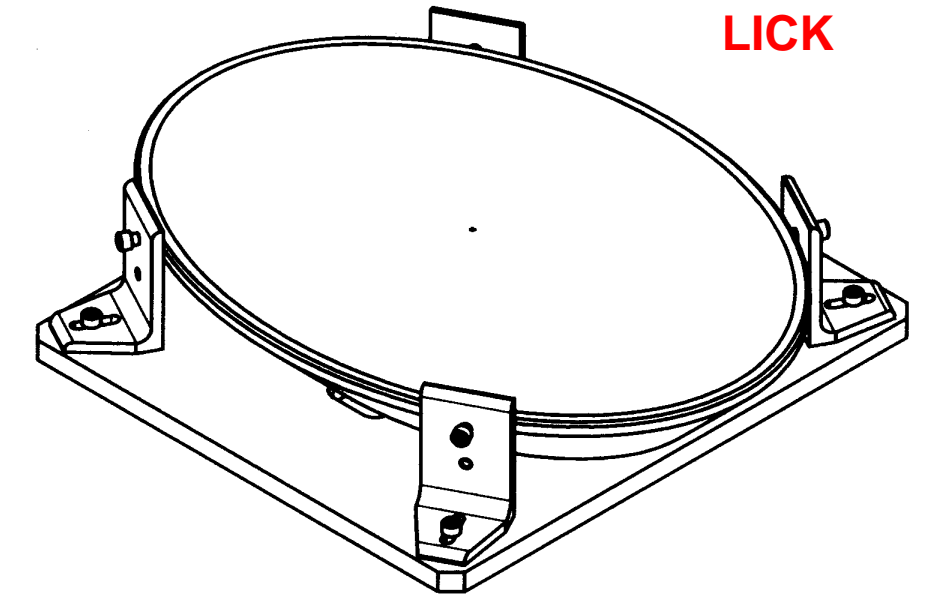
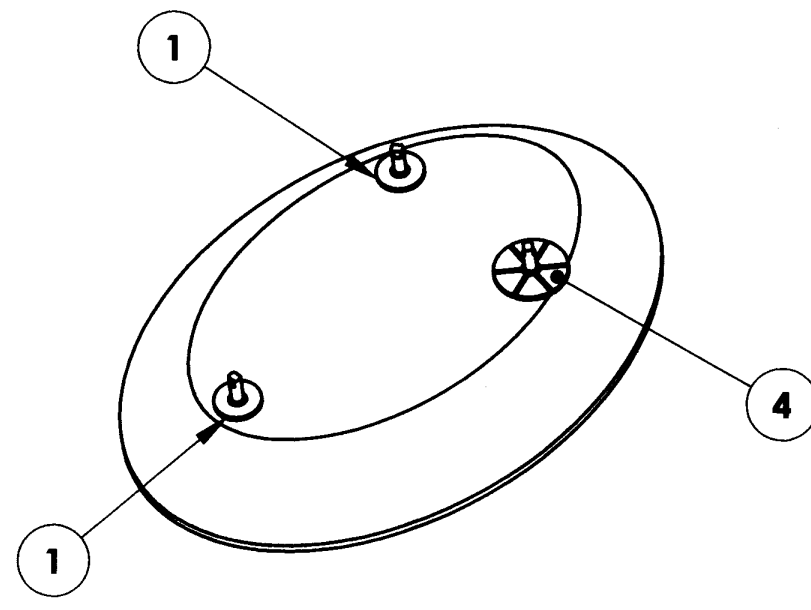


DRAWING NO. <b>ASY-5671</b>	REVISION <b>REL-02</b>
PROJECT CODE: <b>LICK-51</b>	
REQUIRED PER TELESCOPE: 1	
MATERIAL: PER COMPONENT	
CONDITION: PER COMPONENT	
FINISH: PER COMPONENT	
FINISH COLOR: PER COMPONENT	
APPROXIMATE MASS: 10561.92698273 gm	
REFERENCE DOCUMENTS:	

REV.	DATE	DESCRIPTION	CHK'D	APPV'D	ZONE
1	4/7/2005	INITIAL RELEASE	ETD	GJP	
2	7/7/2009	REVISE PER ECO-1470	<i>JRS</i>	<i>h</i>	

Controlled Document  
Confirm revision before using

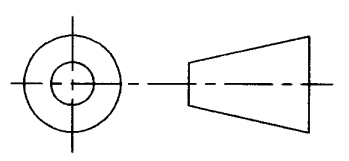
LICK



SECTION Z-Z

DETAIL A  
SCALE 1:1

ITEM NO.	STEP 3/QTY.	PART NUMBER	DESCRIPTION	Material	Weight
12	1	COM-5696	M3 MIRROR FIXTURE PLATE	1/2" THICK 6061-T6 ALUMINIUM PLATE	3722
11	4	HX-SHCS 0.25-20x0.5x0.5-N			
10	4	DIN 912 M6 x 16 --- 16N			
9	4	COM-5708	M2/M3 MIRROR FIXTURE ALIGNMENT BRACKET	3"x2"x0.25" ALUMINUM ANGLE	93
8	3	COM-5709	M2/M3 MIRROR FIXTURE ALIGNMENT SLEEVE	WHITE DELRIN	2
7	4	DIN 912 M4 x 16 --- 16N			
6	4	COM-5710	M2/M3 MIRROR FIXTURE FOOT	Ø 5/8" 6061-T6 ALUMINUM ROD STOCK	6
5	3	Hexagon Thin Nut ISO 4035 - M8 - N			
4	1	COM-13770	M3 MIRROR INSERT - LARGE FLANGE	INVAR 36	86
3	1	COM-5672	M3 MIRROR	MIRROR GRADE ULE OR ZERODUR GLASS	10316
2	3	COM-5695	M3 MIRROR MOUNT FLEXURE	17-4 PH STAINLESS STEEL, H900	17
1	2	COM-5673	M3 MIRROR INSERT	SUPER INVAR 32-5	56



DO NOT SCALE DRAWING

<p>COPYRIGHT</p> <p>THIS DOCUMENT &amp; ENCLOSED PROPRIETARY INFORMATION REMAINS THE PROPERTY OF EOS TECHNOLOGIES, INC. THE INTELLECTUAL PROPERTY AND INFORMATION HEREIN MAY NOT BE COPIED NOR DISCLOSED WITHOUT WRITTEN CONSENT OF EOS TECHNOLOGIES, INC. MANAGEMENT</p>	<p>UNLESS OTHERWISE SPECIFIED: DIMENSIONS ARE IN MILLIMETERS TOLERANCES: X.X = ±0.25MM X.XX = ±0.10MM ANGLES = ±0.5° ROUNDS AND FILLETS ARE R3.0 BREAK ALL SHARP EDGES 0.25MM X 0.25MM</p>	<p>WELDS ARE: MAX SIZE FILLET OR FULL PENETRATION GROOVE AS APPROPRIATE. ALL WELDS ARE CONTINUOUS NEAREST NOMINAL STOCK SIZE MAY BE SUBSTITUTED. INDICATED MACHINED SURFACES</p>	DESIGN	J. CATONE	DATE	6/5/04	<p><b>EOS TECHNOLOGIES, INC.</b> 3160 E. TRANSCON WAY, SUITE 180, TUCSON, AZ 85706 PH: (520) 624-6399</p>						
			DRAWN	K. WASMER	DATE	3/8/05							
			CHECKED	E. DALE	DATE	4/7/05							
			APPROVED	G. J. PENTLAND	DATE	4/8/05							
<p>TITLE: <b>M3 MIRROR ASSEMBLY</b></p>							<p>DRAWING NO. <b>ASY-5671</b></p>	STATUS	Released	REVISION	REL-02	SHEET SIZE	A2
								SHEET	1 OF 5	SCALE	1:4		