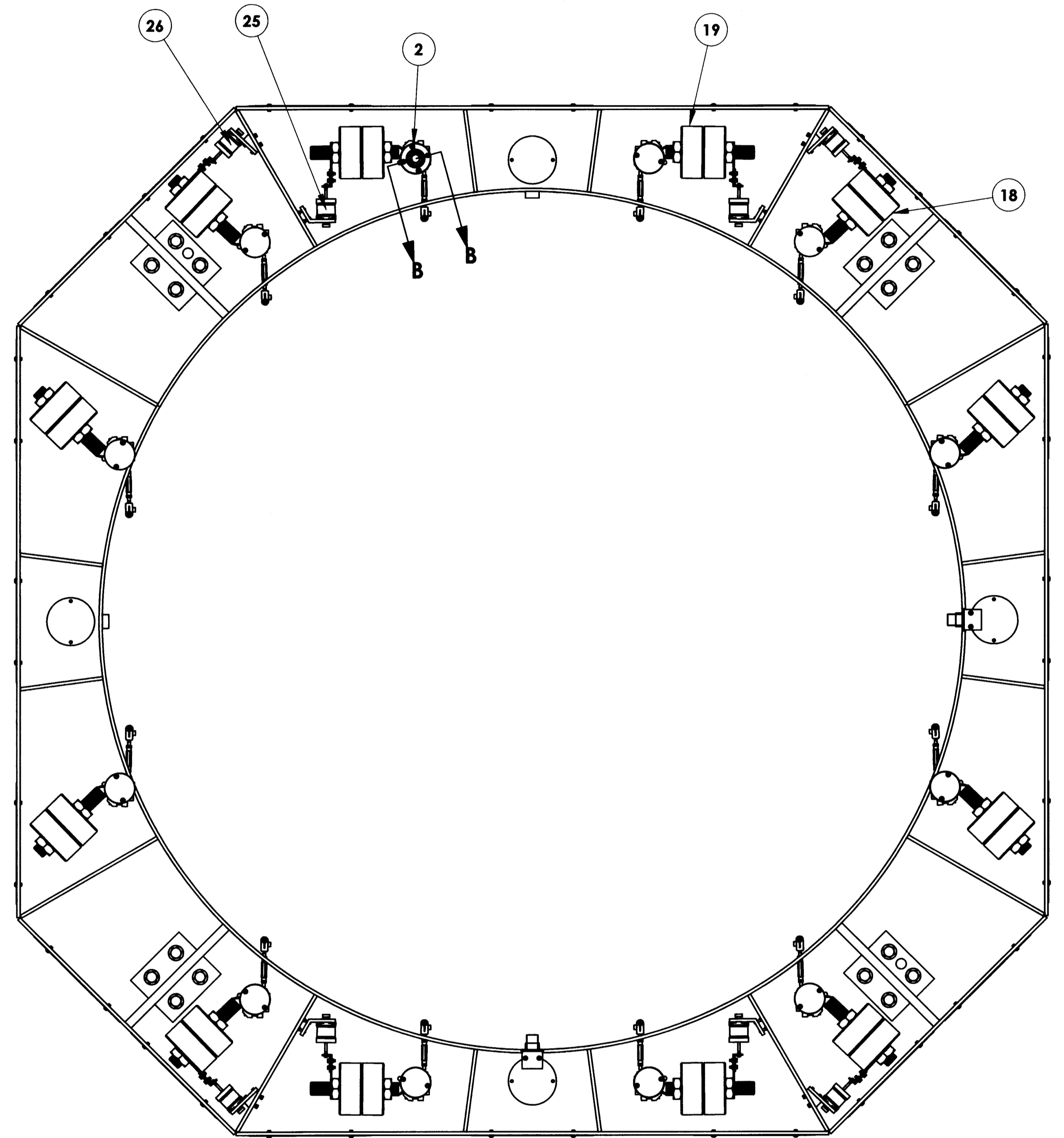


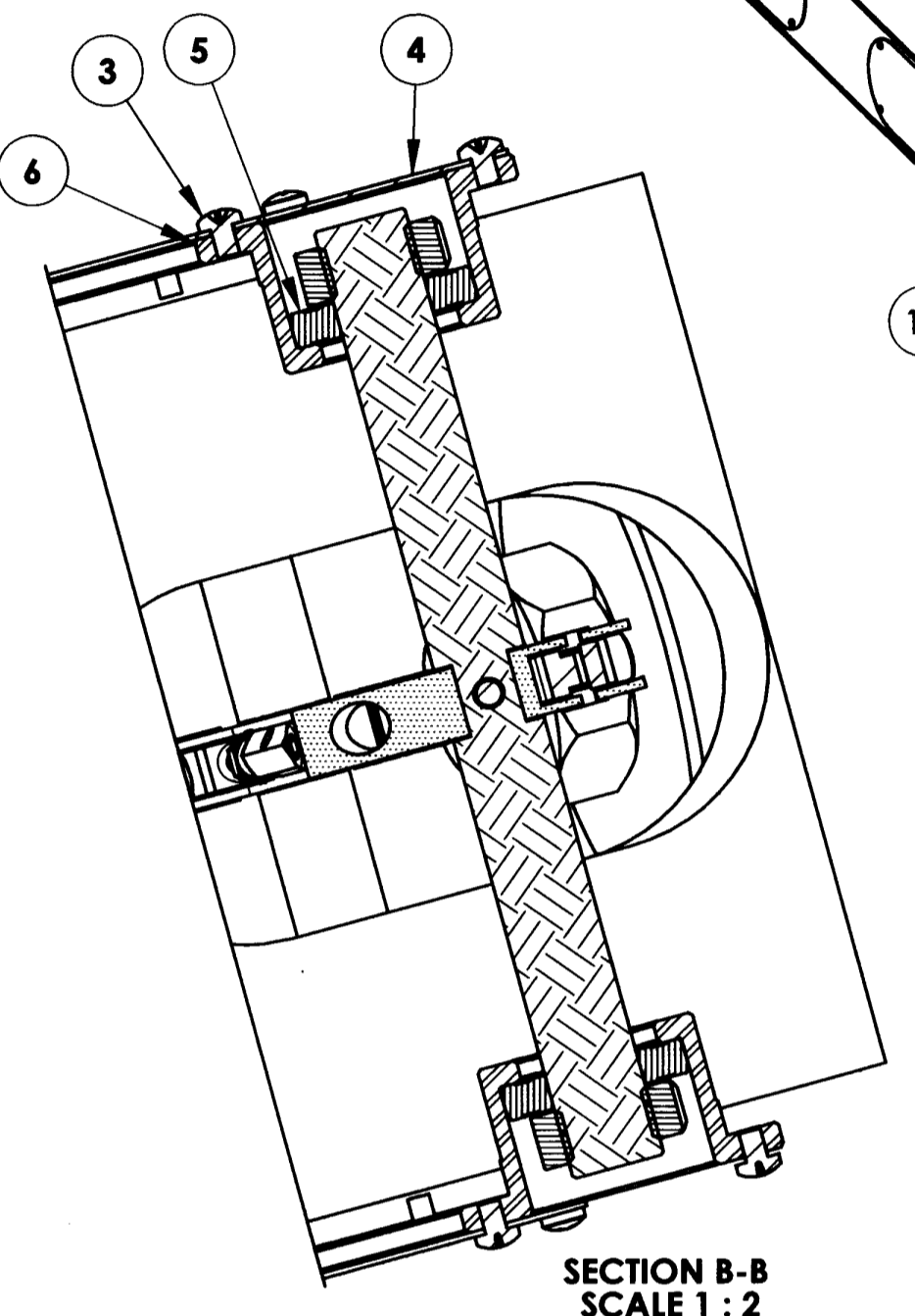
DRAWING NO.	REVISION
ASY-5736	REL-04
PROJECT CODE:	LICK-51
REQUIRED PER TELESCOPE:	1
MATERIAL:	PER COMPONENT
CONDITION:	AS SUPPLIED
SURFACE FINISH:	AS SUPPLIED
FINISH COLOR:	AS SUPPLIED
APPROXIMATE MASS:	1265786.74 gm
REFERENCE DOCUMENTS:	

REV.	DATE	DESCRIPTION	CHKD	APPVD	ZONE
1	2/10/2005	INITIAL RELEASE	ETD	GJP	
2	3/26/2008	REVISE PER ECO-1111	K.C.	K.G.	
3	7/24/2008	REVISED PER ECO-1168	KG	KG	
4	8/13/2009	REVISE PER ECO-1500			

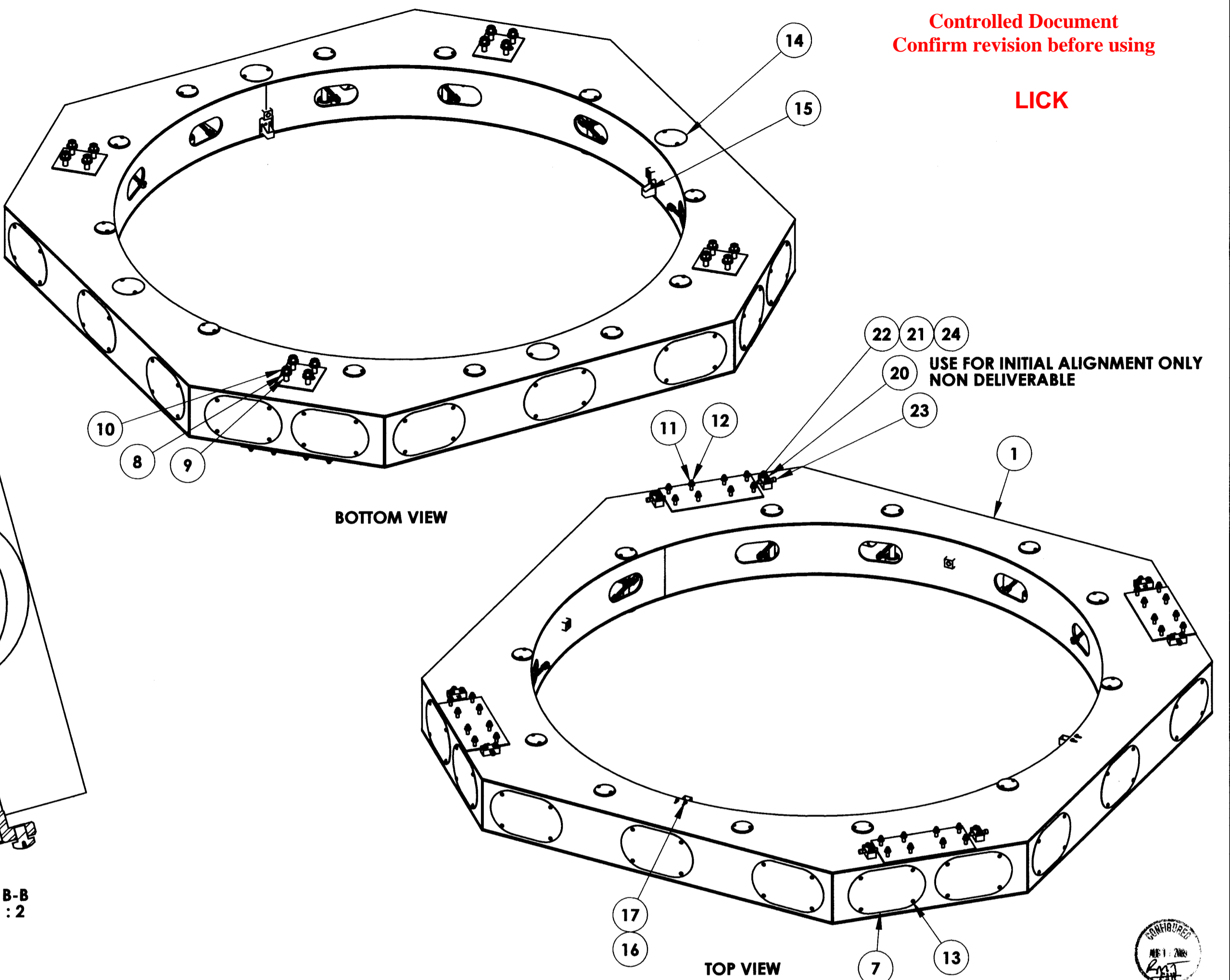
Controlled Document
Confirm revision before using
LICK



TOP VIEW WITH TOP PLATE REMOVED TO SHOW COUNTERWEIGHTS



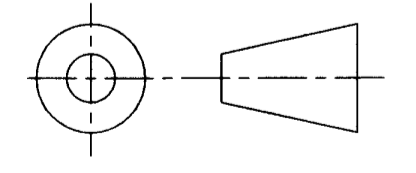
SECTION B-B
SCALE 1:2



BOTTOM VIEW

TOP VIEW

ITEM NO.	Default/ QTY.	PART NUMBER	DESCRIPTION	Material	Weight
26	4	ASY-13716	AIRPOT ASSEMBLY 2	PER COMPONENT	471.09
25	4	ASY-13711	AIRPOT ASSEMBLY 1	PER COMPONENT	351.88
24	16	1140308	NUT, HEX, M10-1.5	FASTENAL, ZINC PLATED ALLOY STEEL	38.815
23	8	0135976	SHCS, M12-1.75 X 70	FASTENAL, ZINC PLATED ALLOY STEEL	193.54
22	16	0135958	SHCS, M10-1.5 X 55	FASTENAL, ZINC PLATED ALLOY STEEL	37.87
21	32	40358	WASHER, FLAT, M10	FASTENAL, ZINC PLATED ALLOY STEEL	0.004
20	8	COM-13095	LSF PUSHER BLOCK	STEEL	541.90
19	4	ASY-5888	LSF COUNTERWEIGHT ASSEMBLY	PER COMPONENT	23761.63163279
18	8	ASY-5888	LSF COUNTERWEIGHT ASSEMBLY	PER COMPONENT	23761.63163279
17	4	DIN 912 M6 x 20 --- 20N			
16	4	Washer DIN 125 - A 6.4	M6 FLAT WASHER	ZINC PLATED ALLOY STEEL	1
15	2	ASY-5901	M1 RADIAL POSITION SENSOR ASSEMBLY	PER COMPONENT	562.30179097
14	4	COM-5751	LSF COVER PLATE 2	14 GA. 6061-T6 ALUMINUM PLATE	67
13	88	B18.3.4M - 8 x 1.25 x 16 SBHCS --N			
12	32	DIN 976-1 -- M12 x 60 A-- N			
11	32	Hexagon Flange Nut DIN 6923 - M12 - N			
10	16	Hexagon Nut ISO 4034 - M20 - N			
9	16	DIN 7990 - M20 x 90-WN			
8	32	DIN 7349-21-Sf			
7	20	COM-5750	LSF COVER PLATE 1	14 GA. 6061-T6 ALUMINUM PLATE	297
6	24	COM-6653	LSF BEARING SUPPORT	304 STAINLESS STEEL	491.02
5	24	McM 2329K49	BEARING DOUBLE SHELDED	AS SUPPLIED	107.80
4	24	COM-6758	LSF COVER PLATE 3	16 GA. A-36 STEEL	70.73
3	48	B18.6.7M - M6 x 1.0 x 8 Type I Cross Recessed PHMS --8N			
2	48	B18.6.7M - M6 x 1.0 x 13 Type I Cross Recessed FHMS --13N			
1	1	COM-5738	LSF WELDMENT MACHINED	ASTM A-36 STEEL	944531.85198280
ITEM NO.	Default/ QTY.	PART NUMBER	DESCRIPTION	Material	Weight



DO NOT SCALE DRAWING

COPYRIGHT

THIS DOCUMENT & ENCLOSED PROPRIETARY INFORMATION REMAINS THE PROPERTY OF EOS TECHNOLOGIES, INC. THE INTELLECTUAL PROPERTY AND INFORMATION HEREIN MAY NOT BE COPIED NOR DISCLOSED WITHOUT WRITTEN CONSENT OF EOS TECHNOLOGIES, INC. MANAGEMENT

UNLESS OTHERWISE SPECIFIED:

DIMENSIONS ARE IN MILLIMETERS
 X.X = ±0.25MM
 X.XX = ±0.10MM
 ANGLES = ±0.5°
 ROUNDS AND FILLETS ARE R3.0
 BREAK ALL SHARP EDGES 0.25MM X 0.25MM

WELDS ARE: MAX SIZE FILLET OR FULL PENETRATION GROOVE WELD AS APPROPRIATE.

ALL WELDS ARE CONTINUOUS
 NEAREST NOMINAL STOCK SIZE MAY BE SUBSTITUTED UPON APPROVAL.
 INDICATED MACHINED SURFACES

DESIGN	M NICKERSON	DATE	07/06/04
DRAWN	R ROBLES	DATE	07/06/04
CHECKED	E. DALE	DATE	2/10/05
APPROVED	G. J. PENTLAND	DATE	2/11/05

EOS TECHNOLOGIES, INC.
 3160 E. TRANSCON WAY, SUITE 180, TUCSON, AZ 85706 PH: (520) 624-6399

LSF ASSEMBLY

DRAWING NO. **ASY-5736** STATUS Released REVISION **REL-04** SHEET SIZE **A1**

SCALE 1:16 SHEET 1 OF 1