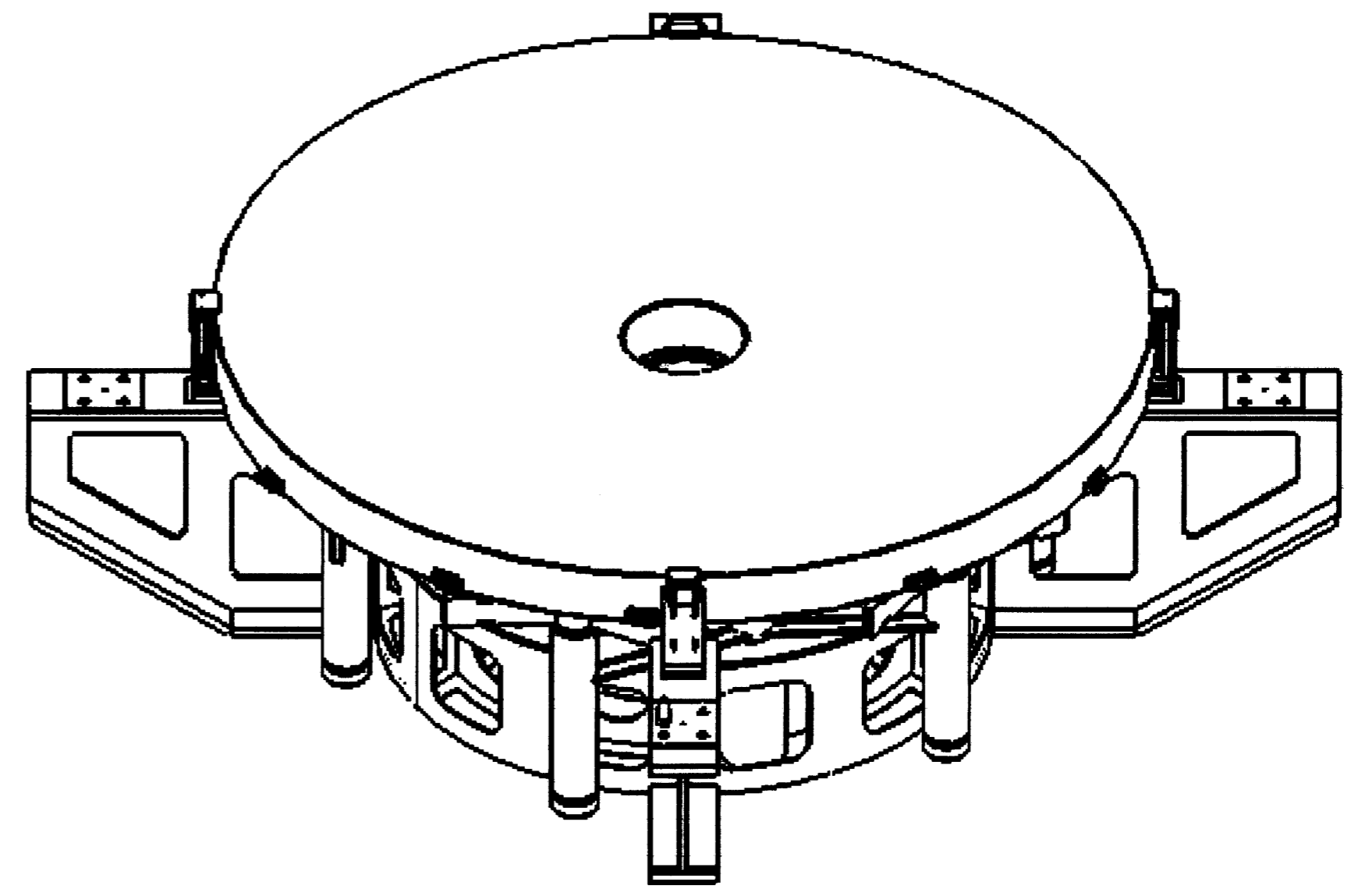
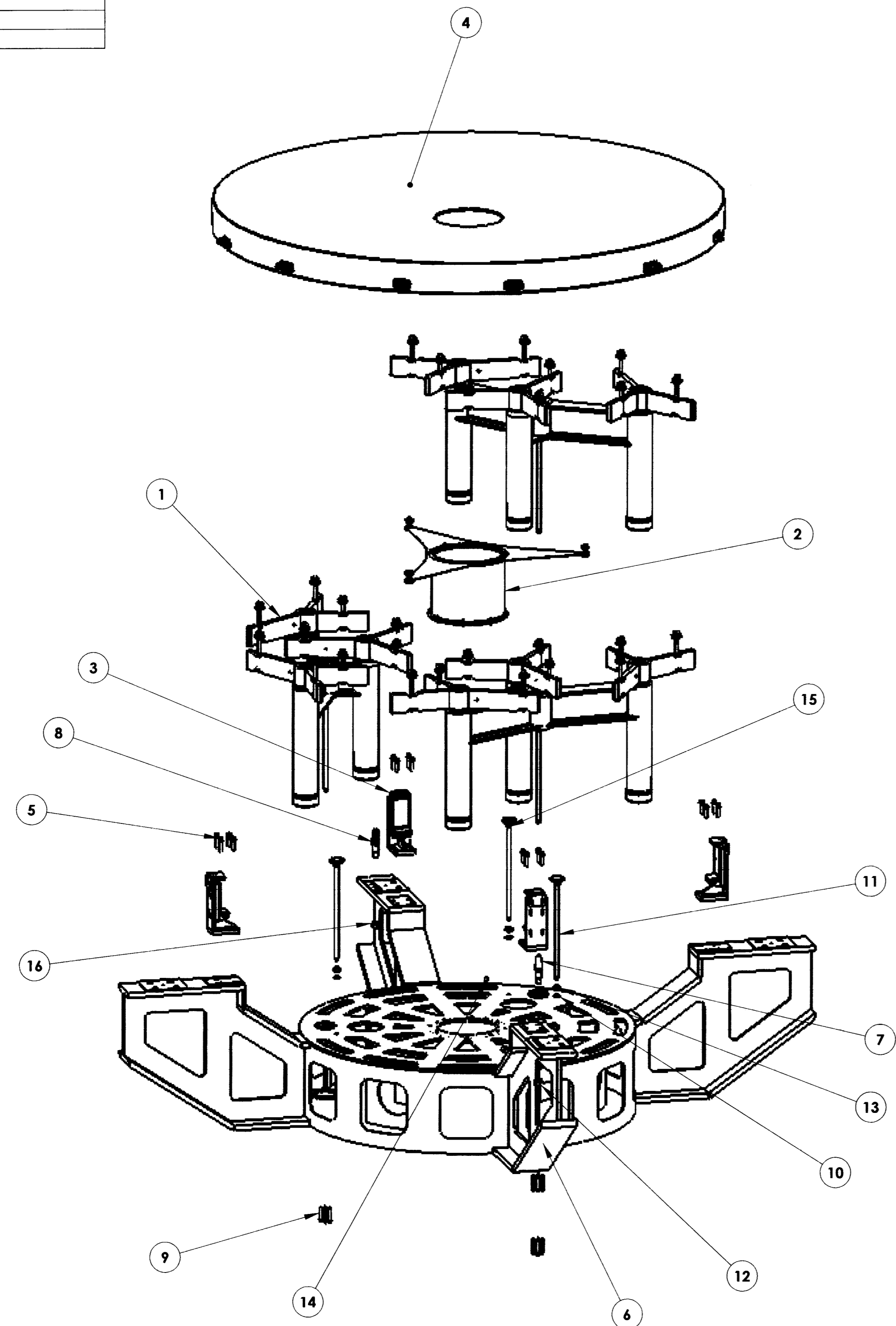


DRAWING NO.	REVISION
ASY-5760	REL-03
PROJECT CODE:	LICK-51
REQUIRED PER TELESCOPE:	1 PER TELESCOPE
MATERIAL:	BY COMPONENT
CONDITION:	BY COMPONENT
SURFACE FINISH:	BY COMPONENT
FINISH COLOR:	BY COMPONENT
APPROXIMATE MASS:	3053372.79 gm

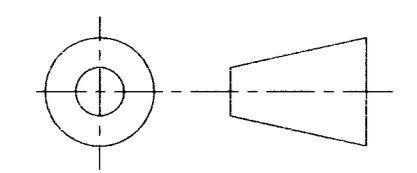
REV.	DATE	DESCRIPTION	CHKD	APPVD	ZONE
1	12/21/05	INITIAL RELEASE	KG	KG	
2	11/18/06	REVISED PER ECO #0855	KG	KG	
3	3/3/2008	REVISE PER ECO-1090			

Controlled Document
Confirm revision before using



LICK

ITEM NO.	Default/ QTY.	PART NUMBER	DESCRIPTION	Material	Weight
16	2	Washer DIN 126 - 22			
15	3	Vlier Swivel Pad essp308b	LEVELING PAD, 5/8"-11, STUDLESS	Alloy Steel, Vlier ESSP308B	0.79
14	4	Parallel Pin ISO 8734 - 6 x 14 - B - St			
13	3	HHNUT 0.6250-11-D-N			
12	2	Hexagon Nut ISO 4034 - M20 - N			
11	3	HBOLT 0.6250-11x8x8-N	5/8" THREADED ROD	ZINC-PLATED 5/8"-11 THREADED ROD	726.88212
10	3	FW 0.625			
9	18	DIN 912 M8 x 60 --- 60N			
8	1	COM-5486	M1 CELL DIAMOND LOCATION PIN	304 STAINLESS STEEL	418
7	1	COM-5485	M1 CELL ROUND LOCATION PIN	304 STAINLESS STEEL	506
6	1	COM-5454	MIRROR CELL - MACHINED	AlSI 304	932171.0769 42
5	16	B18.6.7M - M12 x 1.75 x 50 Indented HFMS --50N			
4	1	ASY-6782	2.4 METER PRIMARY MIRROR ASSEMBLY	PER COMPONENT	1653824.217 13866
3	4	ASY-5866	SEISMIC RESTRAINT	AS SUPPLIED	10303
2	1	ASY-5770	M1 ROTATIONAL RESTRAINT ASSEMBLY	N/A	29320
1	3	ASY-5313	LOADSPREADER BRACKET ASSEMBLY	N/A	130569.68



DO NOT SCALE DRAWING

<p>COPYRIGHT</p> <p>THIS DOCUMENT & ENCLOSED PROPRIETARY INFORMATION REMAINS THE PROPERTY OF EOS TECHNOLOGIES, INC. THE INTELLECTUAL PROPERTY AND INFORMATION HEREIN MAY NOT BE COPIED NOR DISCLOSED WITHOUT WRITTEN CONSENT OF EOS TECHNOLOGIES, INC. MANAGEMENT</p>	<p>UNLESS OTHERWISE SPECIFIED:</p> <p>DIMENSIONS ARE IN MILLIMETERS</p> <p>X.X = ±0.25MM</p> <p>X.XX = ±0.10MM</p> <p>ANGLES = ±0.5°</p> <p>ROUNDS AND FILLETS ARE R3.0</p> <p>BREAK ALL SHARP EDGES 0.25MM X 0.25MM</p>	<p>WELDS ARE: MAX SIZE FILLET OR FULL PENETRATION GROOVE WELD AS APPROPRIATE.</p> <p>ALL WELDS ARE CONTINUOUS</p> <p>NEAREST NOMINAL STOCK SIZE MAY BE SUBSTITUTED UPON APPROVAL.</p> <p>INDICATED MACHINED SURFACES \checkmark</p>	DESIGN	ERIK D	DATE	11/20/05	<p>925 W. GRANT RD, TUCSON, AZ 85705 PH: (520) 624-6399 www.eostech.com</p>
			DRAWN	ERIK D	DATE	11/25/05	
			CHECKED	K. GONZALES	DATE	12/21/05	
			APPROVED	K. GONZALES	DATE	12/21/05	
<p>TITLE</p> <p>M1 SUPPORT ASSEMBLY</p>		<p>DRAWING NO.</p> <p>ASY-5760</p>		<p>STATUS</p> <p>Released</p>	<p>REVISION</p> <p>REL-03</p>	<p>SHEET SIZE</p> <p>A1</p>	
<p>SCALE 1:15</p>		<p>SHEET 1 OF 1</p>					