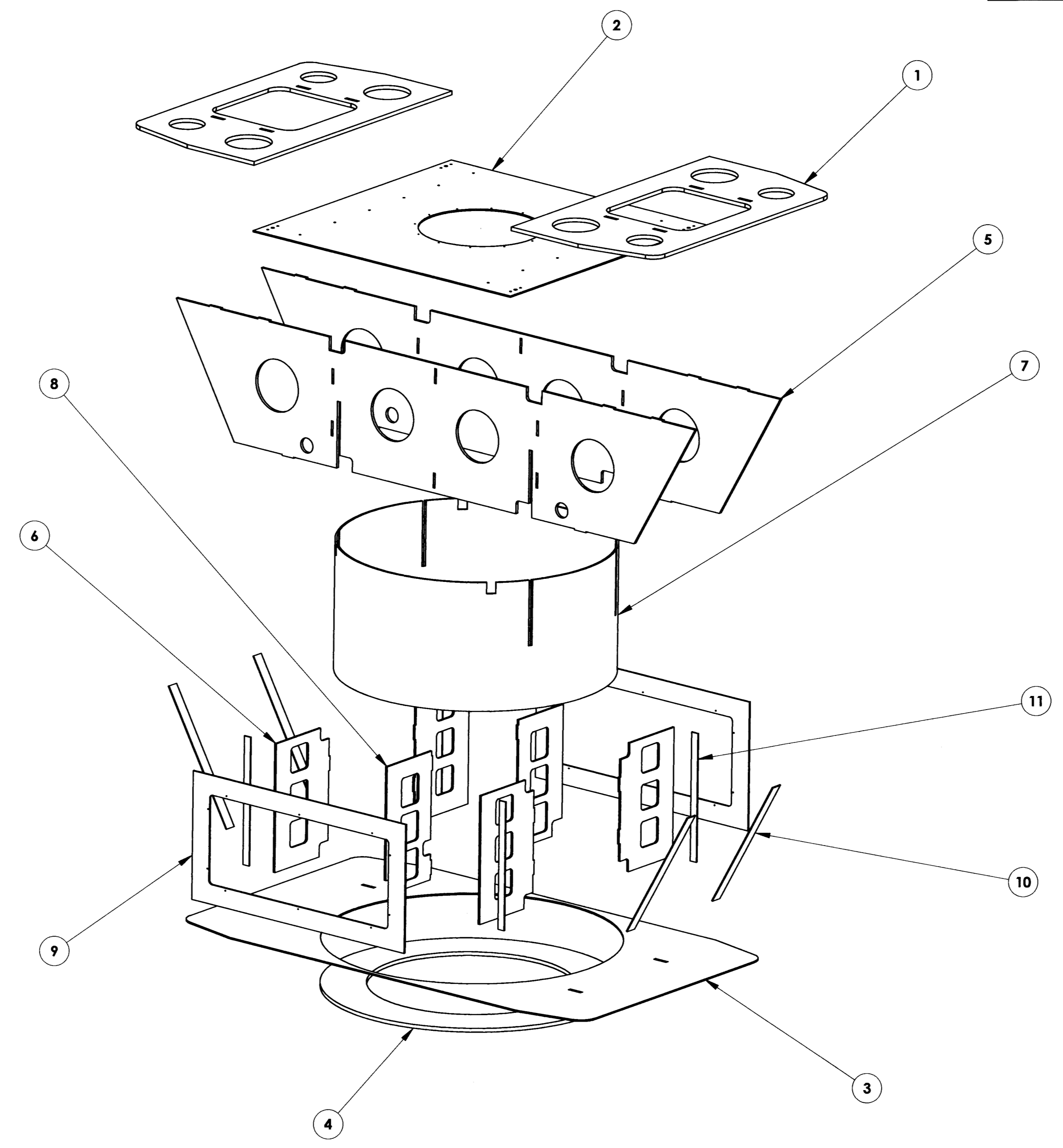
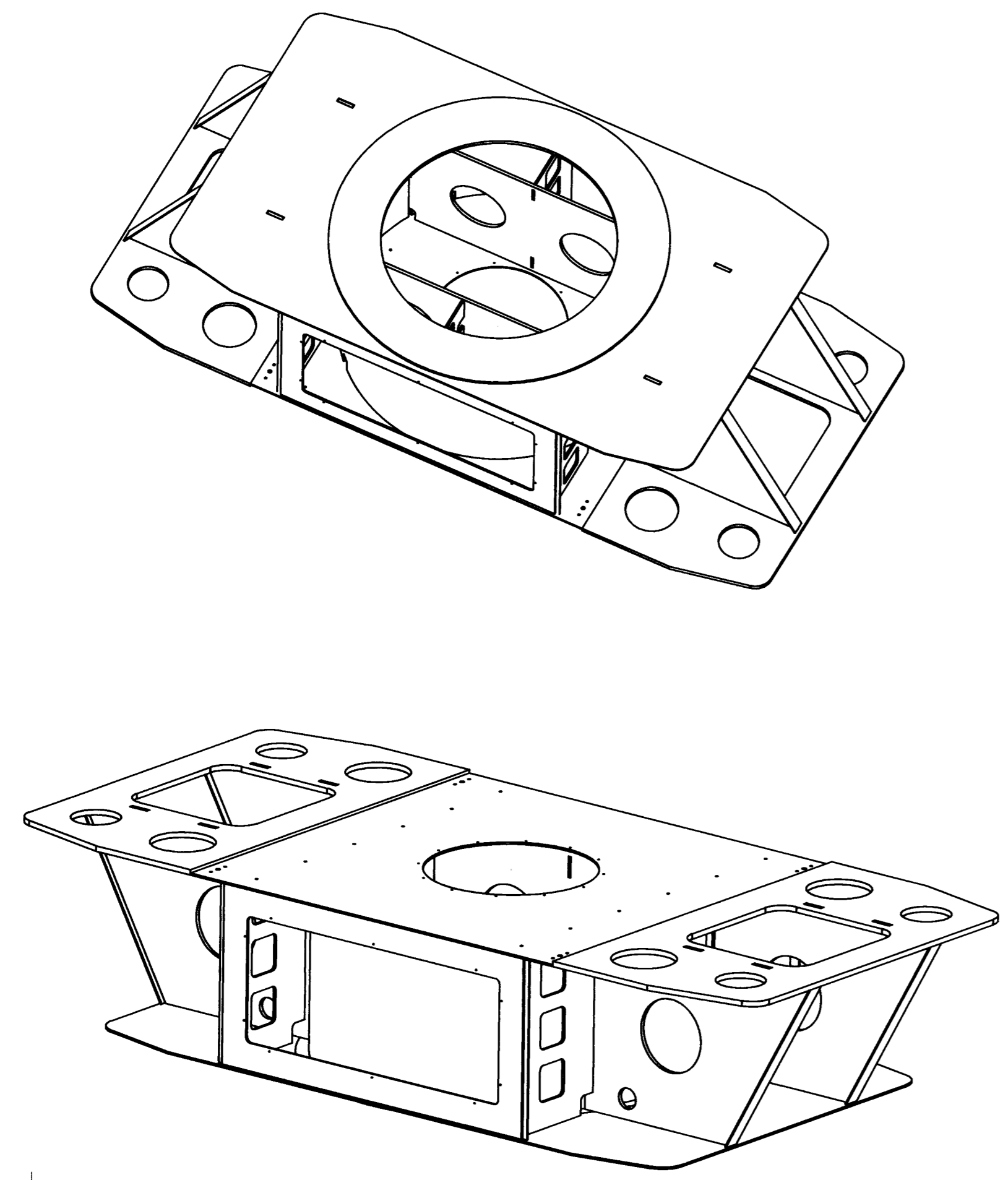


| | |
|---|---------------------------|
| DRAWING NO. ASY-5794 | REVISION REL-01 |
| PROJECT CODE: | |
| REQUIRED PER TELESCOPE: 1 PER TELESCOPE | |
| MATERIAL: BY COMPONENT | |
| CONDITION: STRESS RELIEF AFTER WELDING | |
| SURFACE FINISH: NATURAL | |
| FINISH COLOR: NATURAL | |
| APPROXIMATE MASS: 2986255.26 gm | |
| REFERENCE DOCUMENTS: | |

| REV. | DATE | DESCRIPTION | CHK'D | APP'VD | ZONE |
|------|---------|-----------------|-------|--------|------|
| 1 | 1/12/05 | INITIAL RELEASE | ED | JJP | |

Controlled Document
Confirm revision before using

- MILL SCALE SHALL BE REMOVED FROM ALL COMPONENTS BEFORE WELDING.
- WELDMENT SHALL HAVE 100% OF ALL INSIDE CORNERS OF ALL MATING PIECES CONTINUOUSLY FILLET WELDED AS REQ'D. ALL LOCATING TABS AND GROOVES SHALL BE PLUG WELDED AS REQ'D. BUTTED COMPONENTS SHALL HAVE A CHAMFERED WELD PREP BEFORE BUTT WELDING.



| ITEM NO. | Default/QTY. | PART NUMBER | DESCRIPTION | Material | Weight |
|----------|--------------|-------------|--------------------------------|-----------------------------|-----------|
| 11 | 4 | COM-5793 | YOKE BASE PANEL MNT 2 | 1/4" THICK A-35 STEEL PLATE | 2204.30 |
| 10 | 4 | COM-5792 | YOKE BASE PANEL MNT | 1/4" THICK A-36 STEEL PLATE | 3784.35 |
| 9 | 2 | COM-4980 | YOKE BASE OUTER CON. PLATE | 3/8" THK A36 STEEL PLATE | 46137.11 |
| 8 | 2 | COM-4979 | YOKE BASE INNER STIFF PLATE | 1/2" THK A36 STEEL PLATE | 27168.04 |
| 7 | 1 | COM-4977 | YOKE BASE CENTER | 1/2" THK A36 STEEL PLATE | 465135.14 |
| 6 | 4 | COM-4976 | YOKE BASE INNER STIFF PLATE 1 | 1/2" THK A36 STEEL PLATE | 35074.86 |
| 5 | 2 | COM-4975 | YOKE BASE MAIN STIFF PLATE | 3/4" THK A36 STEEL PLATE | 411401.24 |
| 4 | 1 | COM-4974 | YOKE BASE INNER PLATE | 1" THK A36 STEEL PLATE | 298500.77 |
| 3 | 1 | COM-4973 | YOKE BASE PLATE | 3/8" THK A36 STEEL PLATE | 264899.88 |
| 2 | 1 | COM-4972 | YOKE BASE TOP PLATE | 3/8" THK. A36 STEEL PLATE | 273687.39 |
| 1 | 2 | COM-4971 | YOKE BASE TIME INTERFACE PLATE | 1" THK A36 STEEL PLATE | 275182.64 |

DO NOT SCALE DRAWING

COPYRIGHT
THIS DOCUMENT & ENCLOSED PROPRIETARY INFORMATION REMAINS THE PROPERTY OF EOS TECHNOLOGIES, INC. THE INTELLECTUAL PROPERTY AND INFORMATION HEREIN MAY NOT BE COPIED NOR DISCLOSED WITHOUT WRITTEN CONSENT OF EOS TECHNOLOGIES, INC. MANAGEMENT

UNLESS OTHERWISE SPECIFIED:
DIMENSIONS ARE IN MILLIMETERS
X.X = ±0.25MM
X.XX = ±0.10MM
ANGLES = ±0.5°
ROUNDS AND FILLETS ARE R3.0
BREAK ALL SHARP EDGES 0.25MM X 0.25MM

WELDS ARE: MAX SIZE FILLET OR FULL PENETRATION GROOVE WELD AS APPROPRIATE.
ALL WELDS ARE CONTINUOUS
NEAREST NOMINAL STOCK SIZE MAY BE SUBSTITUTED UPON APPROVAL.
INDICATED MACHINED SURFACES

| | | | |
|----------|-------------------|------|-------------|
| DESIGN | G PENTLAND | DATE | 12-Sept-03 |
| DRAWN | A LITTLE | DATE | 12-Sept-03 |
| CHECKED | <i>S J</i> | DATE | 1/12/05 |
| APPROVED | <i>J Pentland</i> | DATE | JAN 12 2005 |

| | | | |
|---|----------|--------|----------|
| EOS TECHNOLOGIES, INC. 3160 E. TRANCON WAY, SUITE 180, TUCSON, AZ 85706 PH: (520) 624-6399 | | | |
| YOKE BASE WELDMENT | | | |
| DRAWING NO. | ASY-5794 | STATUS | Released |
| REVISION | REL-01 | SHEET | 1 OF 2 |
| SHEET SIZE | A1 | SCALE | 1:10 |