

DRAWING NO. **ASY-5888** REVISION **REL-03**

PROJECT CODE: **LICK-51**

REQUIRED PER TELESCOPE: 12

MATERIAL: PER COMPONENT

CONDITION: PER COMPONENT

FINISH: PER COMPONENT

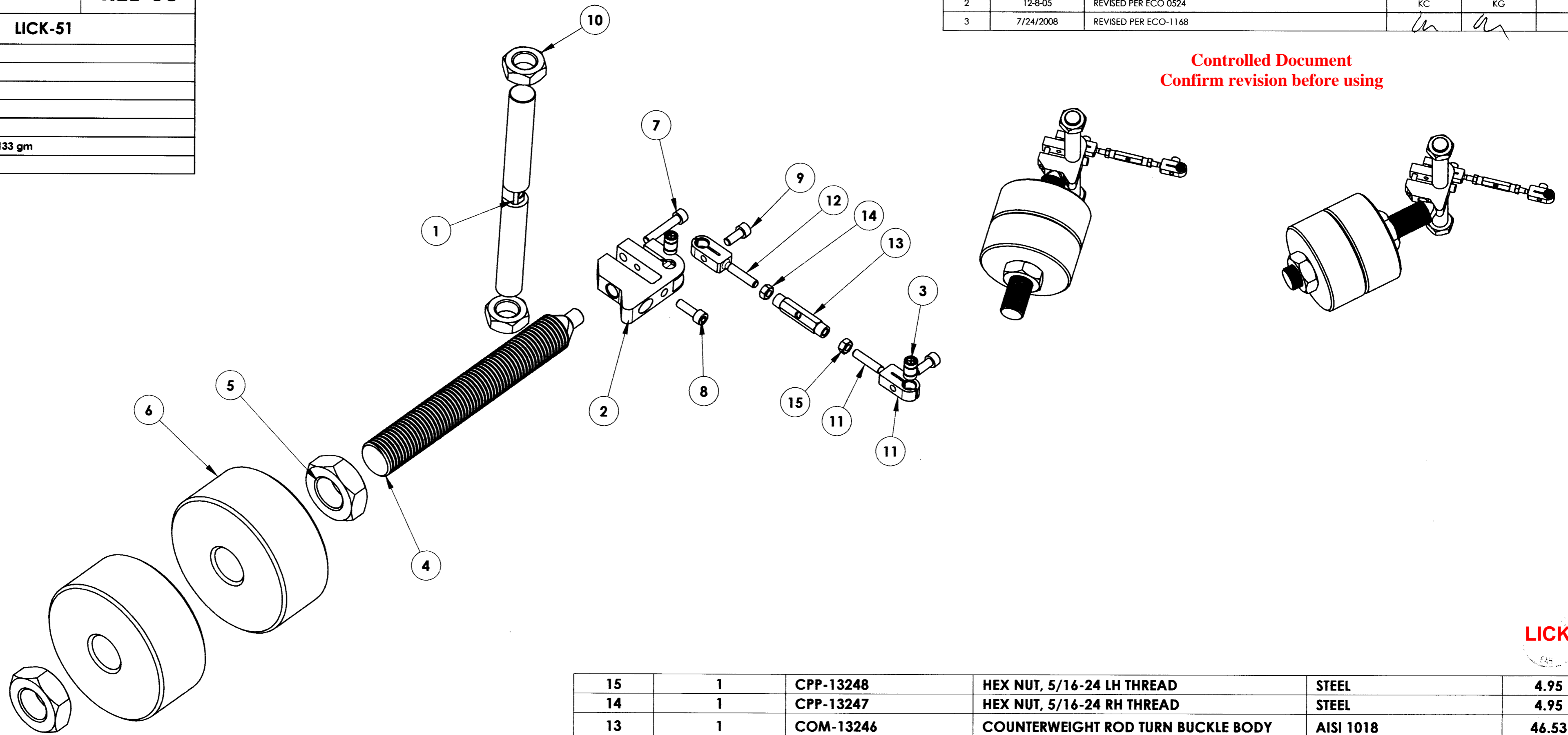
FINISH COLOR: PER COMPONENT

APPROXIMATE MASS: 23768.23140133 gm

REFERENCE DOCUMENTS:

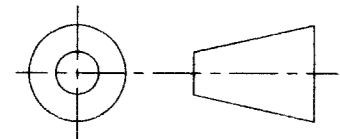
REV.	DATE	DESCRIPTION	CHK'D	APP'VD	ZONE
1	2-10-05	INITIAL RELEASE	E. DALE	G. PENTLAND	
2	12-8-05	REVISED PER ECO 0524	KC	KG	
3	7/24/2008	REVISED PER ECO-1168	<i>in</i>	<i>an</i>	

Controlled Document
Confirm revision before using



LICK

ITEM NO.	Default/QTY.	PART NUMBER	DESCRIPTION	Material	Weight
15	1	CPP-13248	HEX NUT, 5/16-24 LH THREAD	STEEL	4.95
14	1	CPP-13247	HEX NUT, 5/16-24 RH THREAD	STEEL	4.95
13	1	COM-13246	COUNTERWEIGHT ROD TURN BUCKLE BODY	AISI 1018	46.53
12	1	COM-13245	LSF COUNTERWEIGHT PUSHER ROD END R. H.	AISI 1018	68
11	1	COM-13244	LSF COUNTERWEIGHT PUSHER ROD END L. H.	AISI 1018	68
10	2	HJNUT 1.0000-8-D-N			
9	2	DIN 912 M8 x 20 --- 20N			
8	2	DIN 912 M8 x 25 --- 25N			
7	1	DIN 912 M8 x 45 --- 45N			
6	2	COM-5898	LSF COUNTERWEIGHT BRASS WEIGHT	BRASS	9403
5	2	HHJNUT 1.5000-6-D-N			
4	1	COM-5897	LSF COUNTERWEIGHT THREADED ROD	304 STAINLESS STEEL	2228
3	2	Lucas 0.5" Flexure	1/2" FLEX PIVOT	SST, LUCAS #6016-400	11.63
2	1	COM-5892	LSF COUNTERWEIGHT PIVOT CLAMP	304 STAINLESS STEEL	415
1	1	COM-6654	LSF COUNTERWEIGHT SHAFT	1 IN. DIA A-36 STEEL ROD	1036.09



DO NOT SCALE DRAWING

COPYRIGHT
 THIS DOCUMENT & ENCLOSED PROPRIETARY INFORMATION REMAINS THE PROPERTY OF EOS TECHNOLOGIES, INC. THE INTELLECTUAL PROPERTY AND INFORMATION HEREIN MAY NOT BE COPIED NOR DISCLOSED WITHOUT WRITTEN CONSENT OF EOS TECHNOLOGIES, INC. MANAGEMENT

UNLESS OTHERWISE SPECIFIED:
 DIMENSIONS ARE IN MILLIMETERS
 TOLERANCES:
 X.X = ±0.25MM
 X.XX = ±0.10MM
 ANGLES = ±0.5°
 ROUNDS AND FILLETS ARE R3.0
 BREAK ALL SHARP EDGES
 0.25MM X 0.25MM

WELDS ARE:
 MAX SIZE FILLET OR
 FULL PENETRATION GROOVE
 AS APPROPRIATE.
 ALL WELDS ARE CONTINUOUS
 NEAREST NOMINAL STOCK SIZE
 MAY BE SUBSTITUTED.
 INDICATED MACHINED SURFACES

3.2

DESIGN	J. CATONE	DATE	7-6-04
DRAWN	K. WASMER	DATE	1-19-05
CHECKED	E. DALE	DATE	2-10-05
APPROVED	G. PENTLAND	DATE	2-11-05

EOS TECHNOLOGIES, INC.
 3160 E. TRANCON WAY, SUITE 180, TUCSON, AZ 85706 PH: (520) 624-6399

EOS TECHNOLOGIES, INC.

TITLE: **LSF COUNTERWEIGHT ASSEMBLY**

DRAWING NO. **ASY-5888**

STATUS: Released

REVISION: **REL-03**

SHEET 1 OF 1

SCALE: 1:5

SHEET SIZE: **A2**