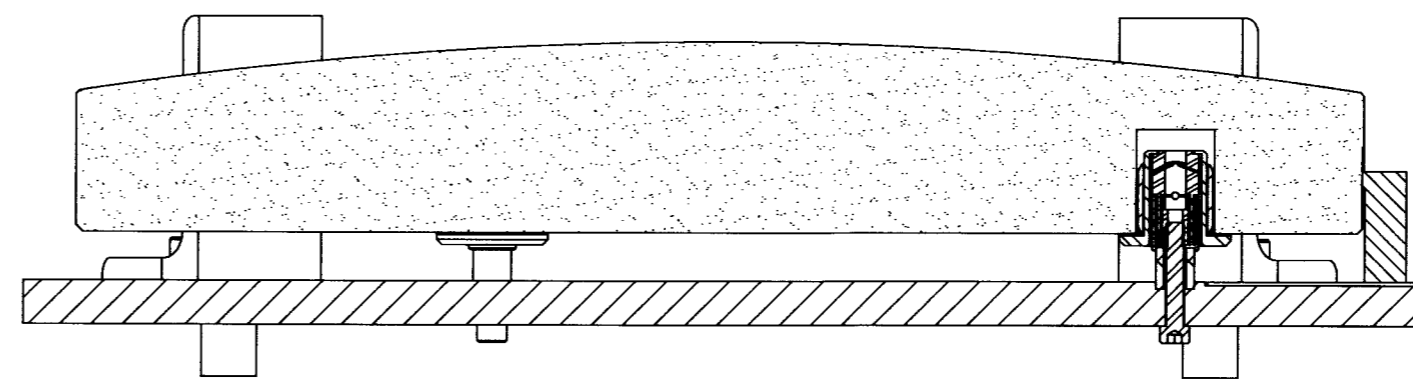
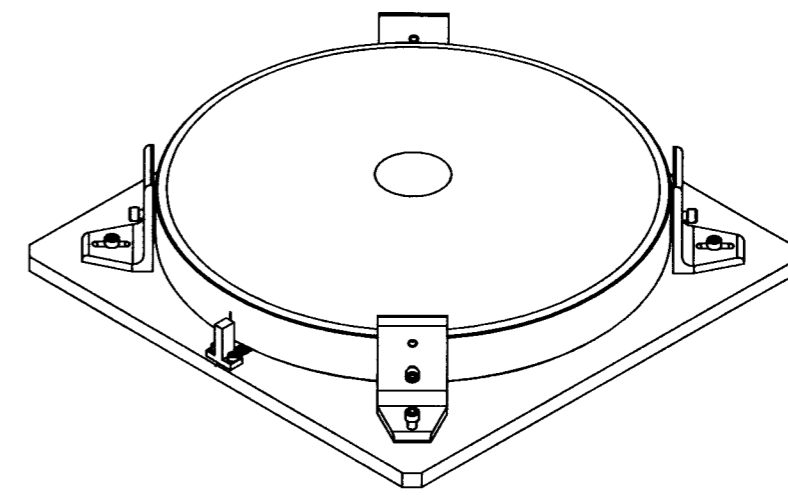
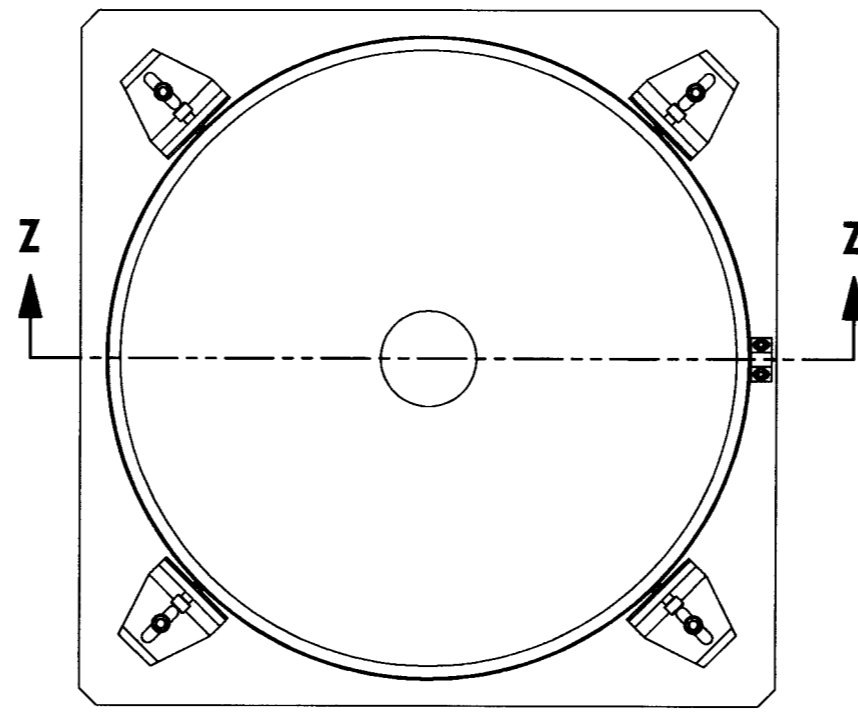


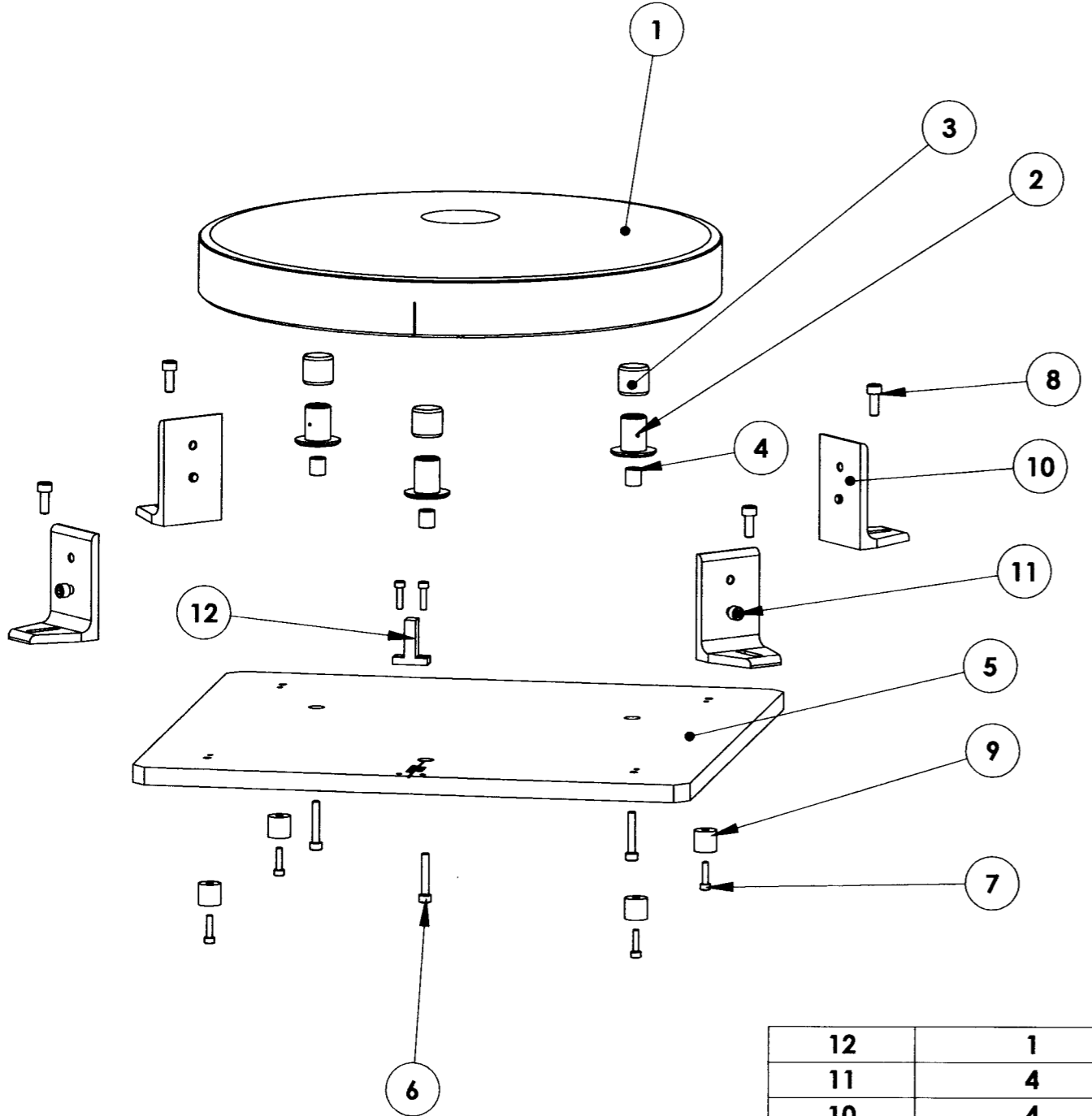
DRAWING NO. <b>ASY-5916</b>	REVISION <b>REL-02</b>
PROJECT CODE: <b>LICK-51</b>	
REQUIRED PER TELESCOPE: 1	
MATERIAL: PER COMPONENT	
CONDITION: PER COMPONENT	
FINISH: PER COMPONENT	
FINISH COLOR: PER COMPONENT	
APPROXIMATE MASS: 18657 gm	
REFERENCE DOCUMENTS:	

REV.	DATE	DESCRIPTION	CHK'D	APP'VD	ZONE
1	3/1/05	INITIAL RELEASE	KLW	GJP	
2	3/17/2005	REVISED PER ECO #0303	KLW	<i>GJP</i>	

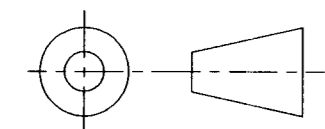
**Controlled Document**  
Confirm revision before using



SECTION Z-Z  
SCALE 1 : 2



12	1	COM-5925	M2 MIRROR FIXTURE ALIGNMENT INDICATOR	6061-T6 ALUMINUM, 1/2" PLATE	10
11	4	HX-SHCS 0.25-20x0.5x0.5-N			
10	4	COM-5708	M2/M3 MIRROR FIXTURE ALIGNMENT BRACKET	3"x2"x0.25" ALUMINUM ANGLE	93
9	4	COM-5710	M2/M3 MIRROR FIXTURE FOOT	Ø 5/8" 6061-T6 ALUMINUM ROD STOCK	6
8	4	B18.3.1M - 6 x 1.0 x 16 Hex SHCS -- 16NHX			
7	6	B18.3.1M - 4 x 0.7 x 16 Hex SHCS -- 16NHX			
6	3	B18.3.1M - 5 x 0.8 x 30 Hex SHCS -- 30NHX			
5	1	COM-5918	M2 MIRROR FIXTURE PLATE	6061 ALUMINUM PLATE	5471.37
4	3	COM-5923	M2 MIRROR FIXTURE STANDOFF	6061-T6 ALUMINUM	2
3	3	COM-5709	M2/M3 MIRROR FIXTURE ALIGNMENT SLEEVE	WHITE DELRIN	2
2	3	ASY-5190	FLEXURE WELDMENT	PER COMPONENT	53
1	1	COM-5189	M2 MIRROR	MIRROR GRADE CORNING ULE, OR EQUIVALENT	12544.38015331
ITEM NO.	Default/QTY.	PART NUMBER	DESCRIPTION	Material	Weight



DO NOT SCALE DRAWING

**COPYRIGHT**  
THIS DOCUMENT & ENCLOSED PROPRIETARY INFORMATION REMAINS THE PROPERTY OF EOS TECHNOLOGIES, INC. THE INTELLECTUAL PROPERTY AND INFORMATION HEREIN MAY NOT BE COPIED NOR DISCLOSED WITHOUT WRITTEN CONSENT OF EOS TECHNOLOGIES, INC. MANAGEMENT

UNLESS OTHERWISE SPECIFIED:  
DIMENSIONS ARE IN MILLIMETERS  
TOLERANCES:  
X.X = ±0.25MM  
X.XX = ±0.10MM  
ANGLES = ±0.5°  
ROUNDS AND FILLETS ARE R3.0  
BREAK ALL SHARP EDGES  
0.25MM X 0.25MM

WELDS ARE:  
MAX SIZE FILLET OR FULL PENETRATION GROOVE AS APPROPRIATE.  
ALL WELDS ARE CONTINUOUS  
NEAREST NOMINAL STOCK SIZE MAY BE SUBSTITUTED.  
INDICATED MACHINED SURFACES

3.2

DESIGN	J. CATONE	DATE	9/3/04
DRAWN	J. CATONE	DATE	9/3/04
CHECKED	KEVIN WASMER	DATE	3/1/05
APPROVED	G. PENTLAND	DATE	3/4/05

**EOS TECHNOLOGIES, INC.**  
3160 E. TRANSCON WAY, SUITE 180, TUCSON, AZ 85706 PH: (520) 624-6399

**M2 MIRROR ASSEMBLY**

DRAWING NO. **ASY-5916**

STATUS	Released	REVISION	REL-02	SHEET SIZE	A2
SHEET	1 OF 5	SCALE	1:4		