

DRAWING NO. **ASY-5936** REVISION **REL-04**

PROJECT CODE: **LICK-51**

REQUIRED PER TELESCOPE: 1

MATERIAL: PER COMPONENT

CONDITION: PER COMPONENT

SURFACE FINISH: PER COMPONENT

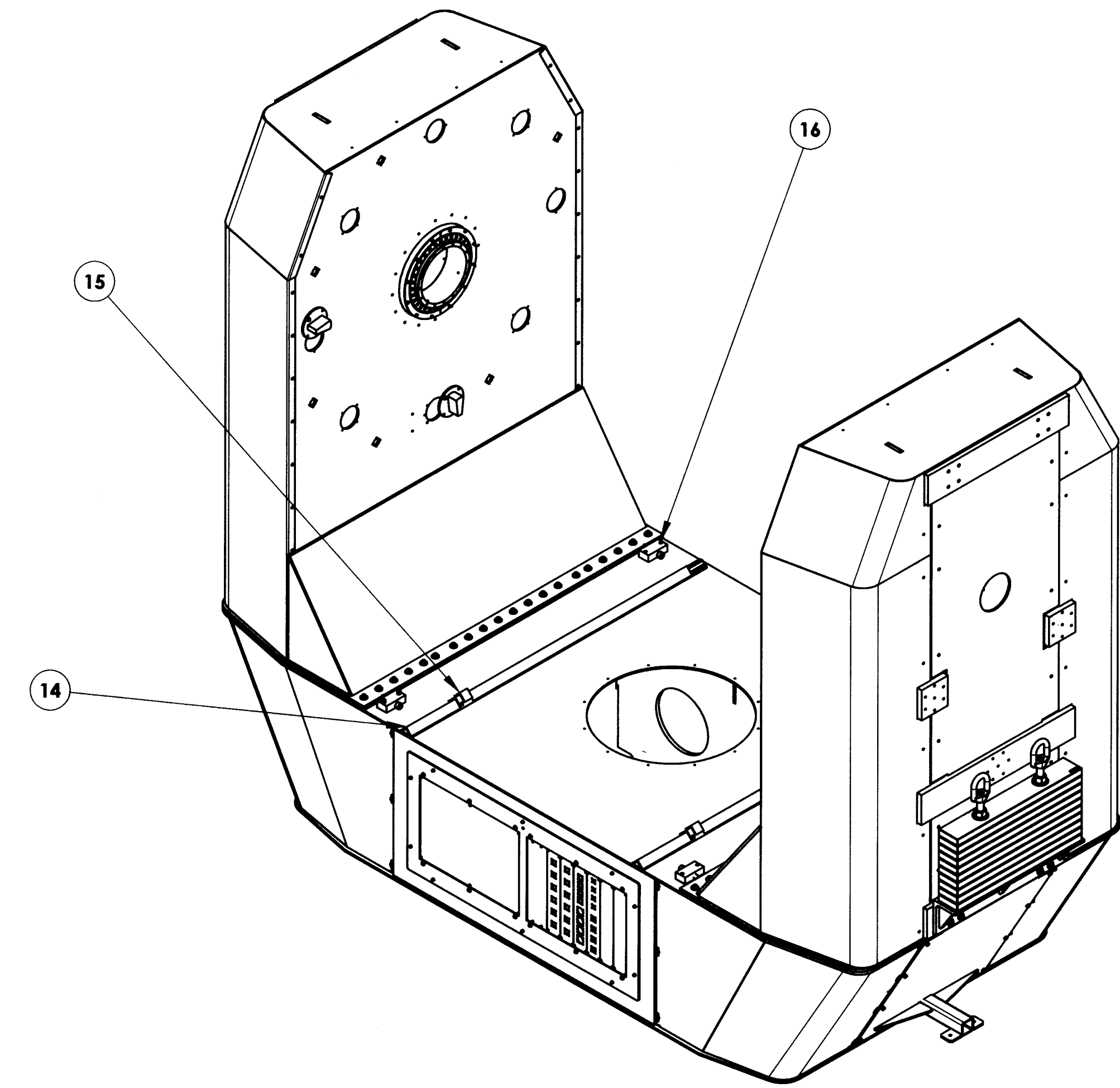
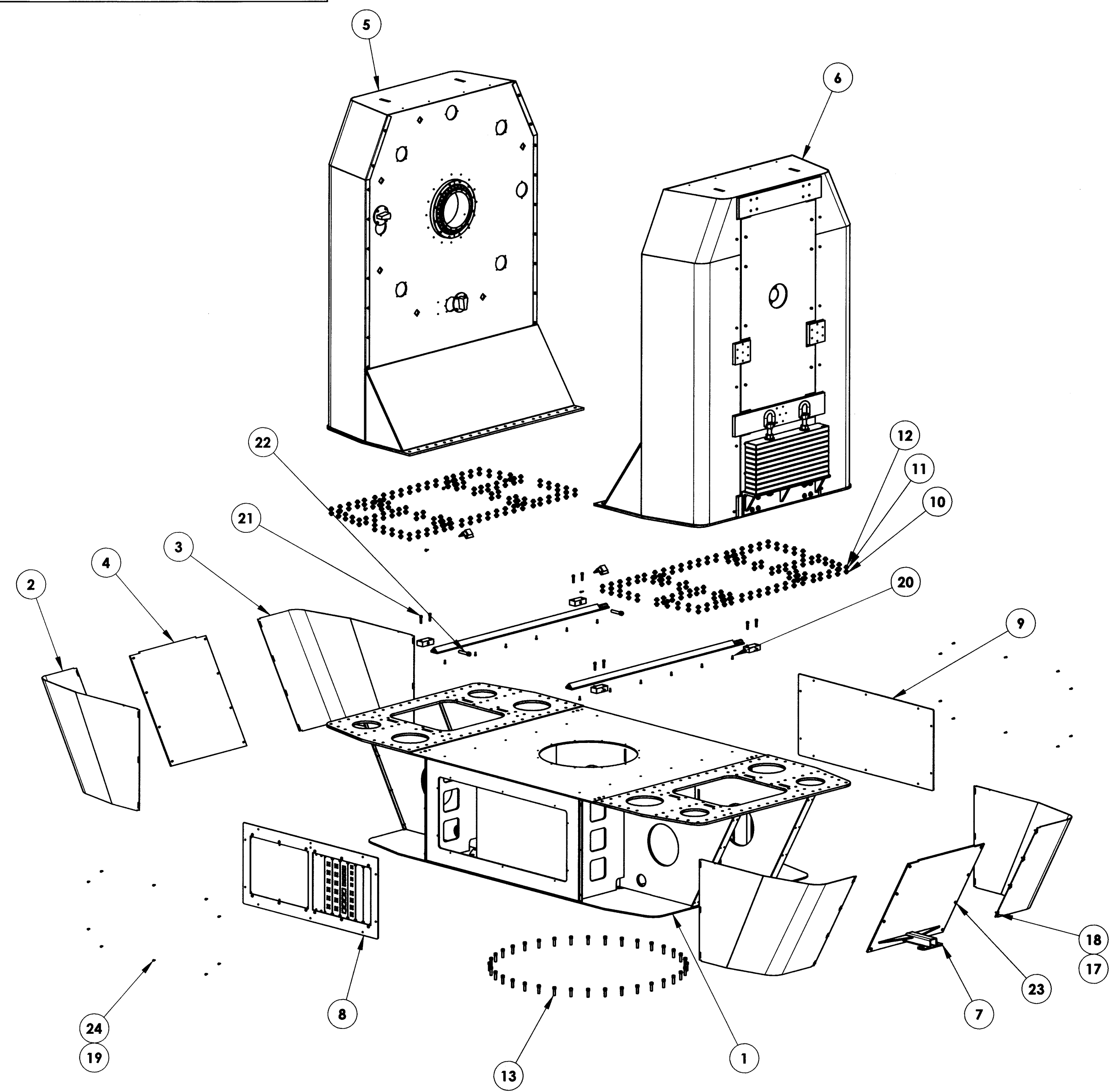
FINISH COLOR: PER COMPONENT

APPROXIMATE MASS: 7571250.51 gm

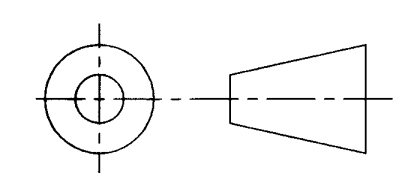
REFERENCE DOCUMENTS:

REV.	DATE	DESCRIPTION	CHKD	APPVD	ZONE
1	6-29-05	INITIAL RELEASE	E. DALE	K. HARRIS	
2	11-4-05	REVISED PER ECO 0483	KW	KG	
3	9-14-06	REVISED PER ECO 0803	KG	KG	
4	6/19/2009	REVISE PER ECO 1460	JRO	W	

Controlled Document  
Confirm revision before using



24	20	B18.3.1M - 6 x 1.0 x 16 Hex SHCS -- 16NHX			
23	16	B18.3.1M - 10 x 1.5 x 20 Hex SHCS -- 20NHX			
22	4	B18.3.1M - 20 x 2.5 x 100 Hex SHCS -- 52NHX			
21	8	B18.3.1M - 12 x 1.75 x 50 Hex SHCS -- 50NHX			
20	12	B18.3.1M - 8 x 1.25 x 20 Hex SHCS -- 20NHX			
19	20	B18.22M - Plain washer, 6 mm, narrow	M6 FLAT WASHER ZINC PLATED ALLOY STEEL	ZINC PLATED STEEL	1
18	28	B18.3.1M - 6 x 1.0 x 25 Hex SHCS -- 25NHX		ZINC PLATED ALLOY STEEL	0
17	28	B18.22M - Plain washer, 6 mm, regular			
16	4	COM-8068	FORK PUSH BLOCK	STEEL	2278.09
15	2	COM-8437	TRACK STOP	A36 Structural Steel	696.64
14	2	COM-6472	M1 CART GUIDE RAIL	AISI 1020 2X2X1/4" ANG, .25X1.75 FLAT	16546.35
13	36	B18.3.1M - 16 x 2.0 x 55 Hex SHCS -- 55NHX			
12	172	B18.3.1M - 12 x 1.75 x 55 Hex SHCS -- 55NHX			
11	344	B18.22M - Plain washer, 12 mm, regular	M12 ANSI WASHER	ZINC PLATED ALLOY STEEL	21
10	172	B18.2.4.1M - Hex nut, Style 1, M12 x 1.75 --D-N			
9	1	COM-8435	YOKE BASE PANEL	6061 Alloy - ALUMINUM	18187.86
8	1	ASY-5660	YOKE BASE BACK PANEL	BY COMPONENT	
7	1	com-13313	TOW HITCH	AS NOTED	69256.98
6	1	ASY-7054	RIGHT FORK ASSEMBLY	PER COMPONENT	2588989.69
5	1	ASY-7990	LEFT FORK ASSEMBLY	PER COMPONENT	1920132.14
4	1	COM-6513	FORK BASE END SKIN	A36 Structural Steel	62569.65
3	2	COM-6512	MIRROR FORK BASE CORNER SKIN	6061 Alloy - ALUMINUM	11086.29
2	2	COM-6511	FORK BASE CORNER SKIN	6061 Alloy - ALUMINUM	11085.71
1	1	COM-5795	YOKE BASE MACHINED	BY COMPONENT	2729246.255877
ITEM NO.	QTY	PART NUMBER	DESCRIPTION	Material	Weight



DO NOT SCALE DRAWING

**COPYRIGHT**

THIS DOCUMENT & ENCLOSED PROPRIETARY INFORMATION REMAINS THE PROPERTY OF EOS TECHNOLOGIES, INC. THE INTELLECTUAL PROPERTY AND INFORMATION HEREIN MAY NOT BE COPIED NOR DISCLOSED WITHOUT WRITTEN CONSENT OF EOS TECHNOLOGIES, INC. MANAGEMENT

**UNLESS OTHERWISE SPECIFIED:**

DIMENSIONS ARE IN MILLIMETERS  
 X.X = ±0.25MM  
 X.XX = ±0.10MM  
 ANGLES = ±0.5°

ROUNDS AND FILLETS ARE R3.0  
 BREAK ALL SHARP EDGES 0.25MM X 0.25MM

WELDS ARE: MAX SIZE FILLET OR FULL PENETRATION GROOVE WELD AS APPROPRIATE.

ALL WELDS ARE CONTINUOUS

NEAREST NOMINAL STOCK SIZE MAY BE SUBSTITUTED UPON APPROVAL.

INDICATED MACHINED SURFACES

DESIGN	E. DALE	DATE	6-15-05
DRAWN	K. WASMER	DATE	6-15-05
CHECKED	E. DALE	DATE	6-29-05
APPROVED	K. HARRIS	DATE	6-29-05

**EOS TECHNOLOGIES, INC.**  
 3160 E. TRANSCON WAY, SUITE 180, TUCSON, AZ 85706 PH: (520) 624-6399

**YOKE ASSEMBLY**

DRAWING NO.	STATUS	REVISION	SHEET SIZE
<b>ASY-5936</b>	Released	<b>REL-04</b>	<b>A1</b>
SCALE 1:20	SHEET 1 OF 1		