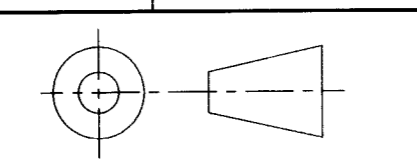


DRAWING NO. **ASY-5937** REVISION **REL-01**

PROJECT CODE: **LICK 51**

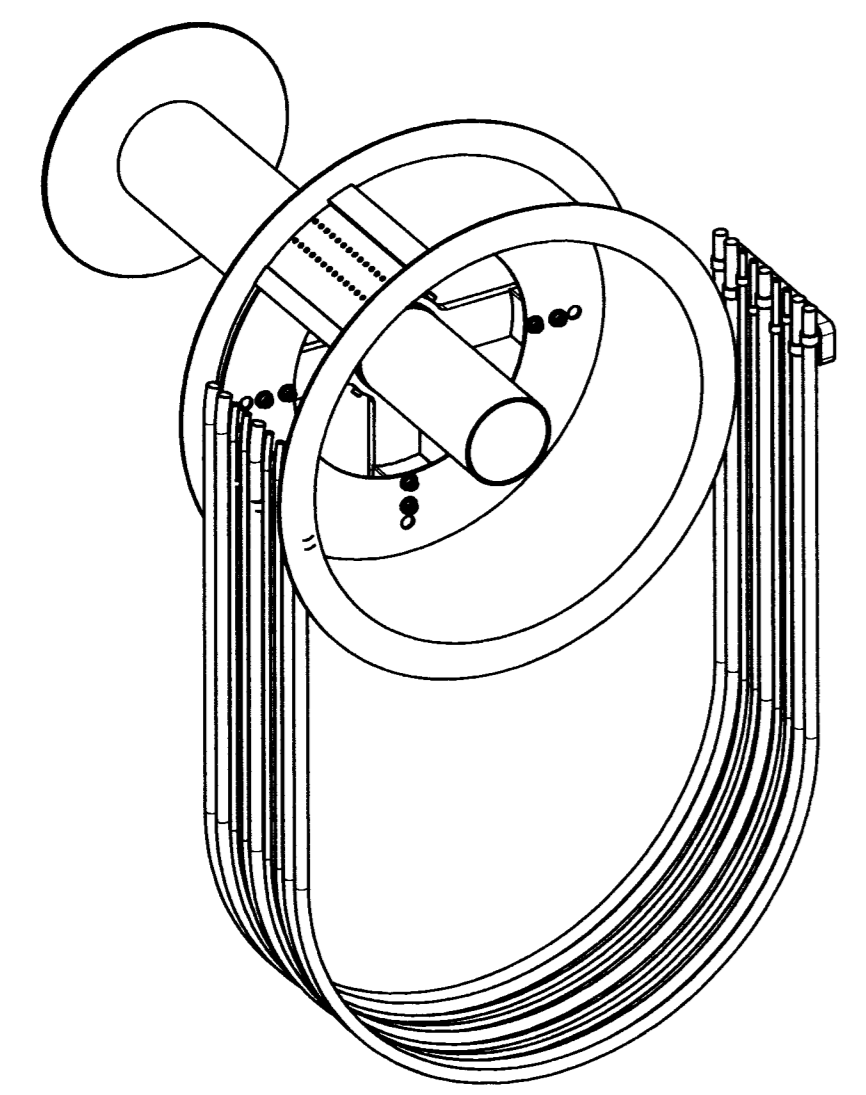
REQUIRED PER TELESCOPE: 1
 MATERIAL: AS SUPPLIED
 CONDITION: AS SUPPLIED
 SURFACE FINISH: AS SUPPLIED
 FINISH COLOR: AS SUPPLIED
 APPROXIMATE MASS: 24067 gm



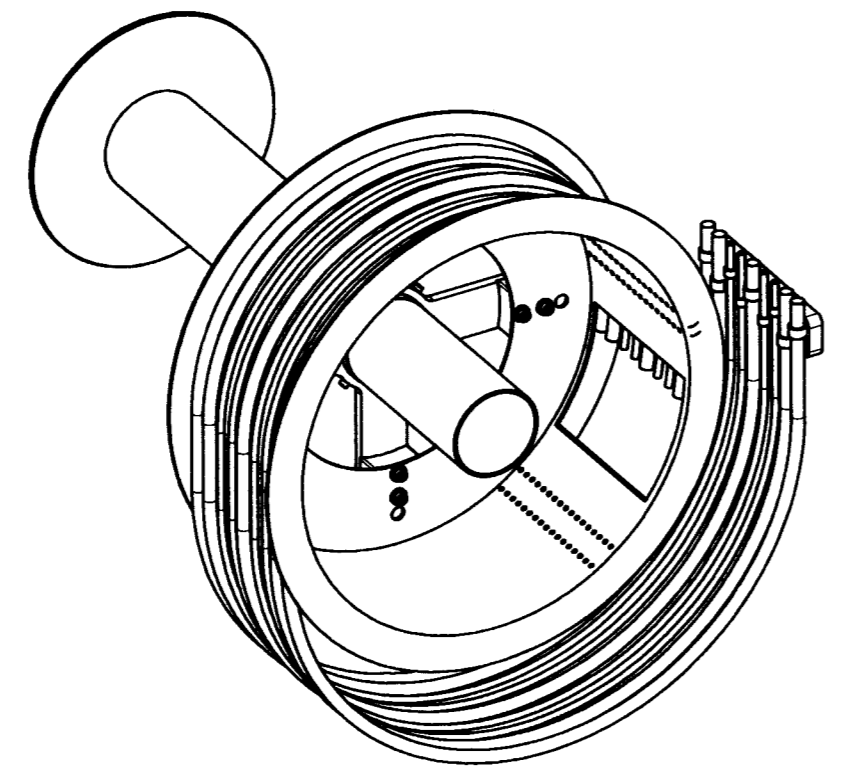
DO NOT SCALE DRAWING

| REV. | DATE | DESCRIPTION | CHK'D | APP'VD | ZONE |
|------|---------|-----------------|-------|--------|------|
| 1 | 6/13/05 | INITIAL RELEASE | ESTD | 998 | |

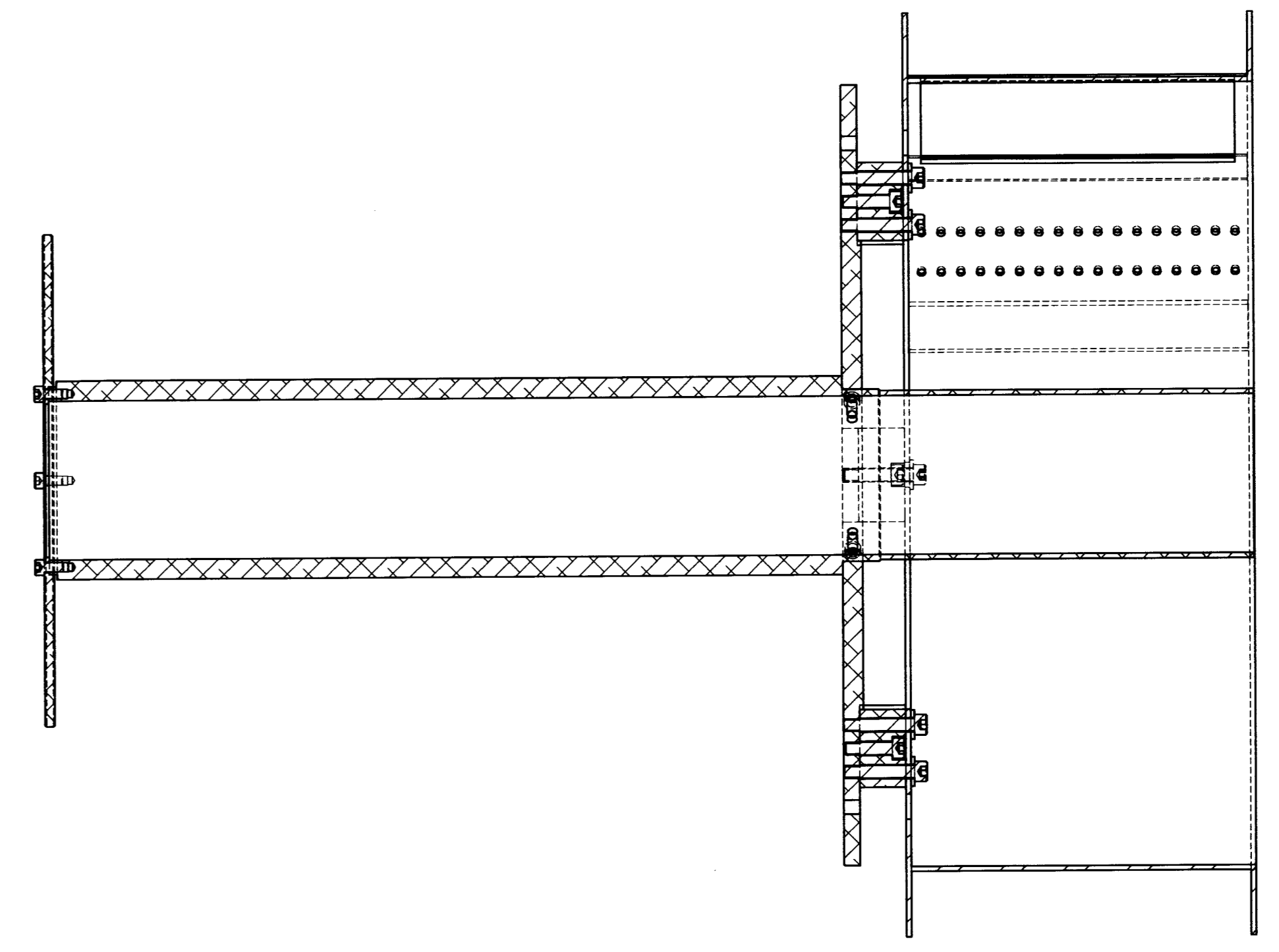
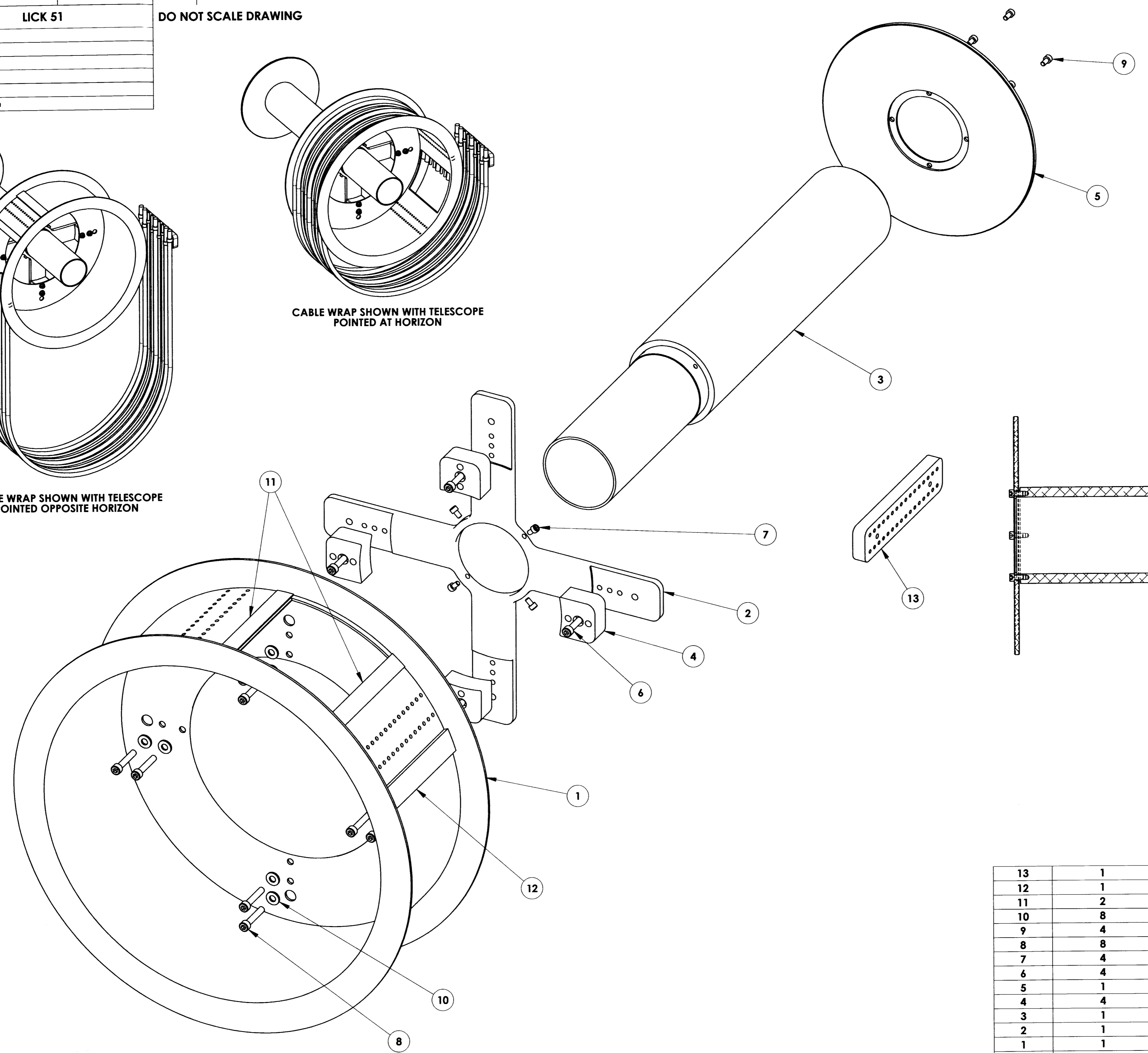
Controlled Document
 Confirm revision before using



CABLE WRAP SHOWN WITH TELESCOPE POINTED OPPOSITE HORIZON



CABLE WRAP SHOWN WITH TELESCOPE POINTED AT HORIZON



| | | | | | |
|----------|--------------|--|-------------------------|-------------------|--------|
| 13 | 1 | COM-5948 | FIXED BRACKET | 6061 - T6 ALLOY | 531 |
| 12 | 1 | MCM8583K27 | PROTECTIVE RIB | NEOPRENE | 44 |
| 11 | 2 | MCM8583K23 | PROTECTIVE EDGE | NEOPRENE | 8 |
| 10 | 8 | B18.22M - Plain washer, 8 mm, narrow | M8 Plain washer, narrow | ZINC PLATED STEEL | 4 |
| 9 | 4 | B18.3.1M - 6 x 1.0 x 12 Hex SHCS -- 12NHX | | | |
| 8 | 8 | B18.3.1M - 8 x 1.25 x 45 Hex SHCS -- 45NHX | | | |
| 7 | 4 | B18.3.1M - 6 x 1.0 x 10 Hex SHCS -- 10NHX | | | |
| 6 | 4 | B18.3.1M - 8 x 1.25 x 30 Hex SHCS -- 30NHX | | | |
| 5 | 1 | COM-5939 | END FLANGE | 6061 - T6 ALLOY | 1170 |
| 4 | 4 | COM-5942 | SPACER | 6061 - T6 ALLOY | 218 |
| 3 | 1 | COM-5940 | HUB | 6061 - T6 ALLOY | 6974 |
| 2 | 1 | COM-5938 | MOUNT FLANGE | 6061 - T6 ALLOY | 1478 |
| 1 | 1 | COM-5941 | DRUM WELDMENT | 1015 CARBON STEEL | 14637 |
| ITEM NO. | EXPLODE/QTY. | PART NUMBER | DESCRIPTION | Material | Weight |

COPYRIGHT

THIS DOCUMENT & ENCLOSED PROPRIETARY INFORMATION REMAINS THE PROPERTY OF EOS TECHNOLOGIES, INC. THE INTELLECTUAL PROPERTY AND INFORMATION HEREIN MAY NOT BE COPIED NOR DISCLOSED WITHOUT WRITTEN CONSENT OF EOS TECHNOLOGIES, INC. MANAGEMENT

UNLESS OTHERWISE SPECIFIED:
 DIMENSIONS ARE IN MILLIMETERS
 X.X = ±0.25MM
 X.XX = ±0.10MM
 ANGLES = ±0.5°
 ROUNDS AND FILLETS ARE R3.0
 BREAK ALL SHARP EDGES 0.25MM X 0.25MM

WELDS ARE: MAX SIZE FILLET OR FULL PENETRATION GROOVE WELD AS APPROPRIATE.
 ALL WELDS ARE CONTINUOUS
 NEAREST NOMINAL STOCK SIZE MAY BE SUBSTITUTED UPON APPROVAL.
 INDICATED MACHINED SURFACES 3.2

DESIGN: RR0BLES DATE: 09/01/04
 DRAWN: RR0BLES DATE: 09/01/04
 CHECKED: S. Jule DATE: 6/13/05
 APPROVED: B. J. Rothland DATE: 6/13/05

EOS TECHNOLOGIES, INCORPORATED
 925 W. GRANT RD, TUCSON, AZ 85705 PH: (520) 624-6399 www.eostech.com

ELEVATION CABLE WRAP

DRAWING NO. **ASY-5937** STATUS Released REVISION **REL-01** SHEET SIZE **A1**
 SCALE 1:3 SHEET 1 OF 1