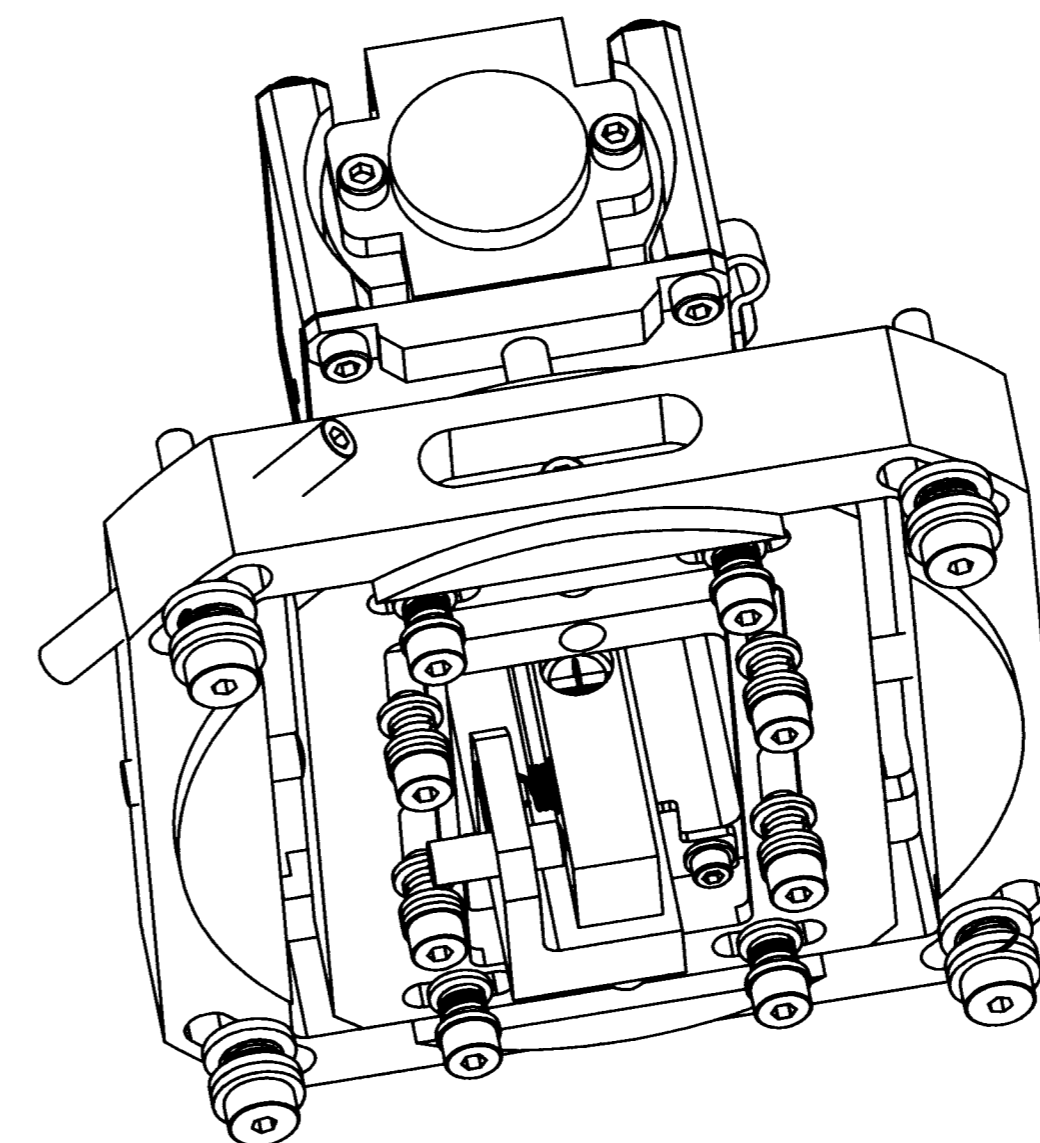
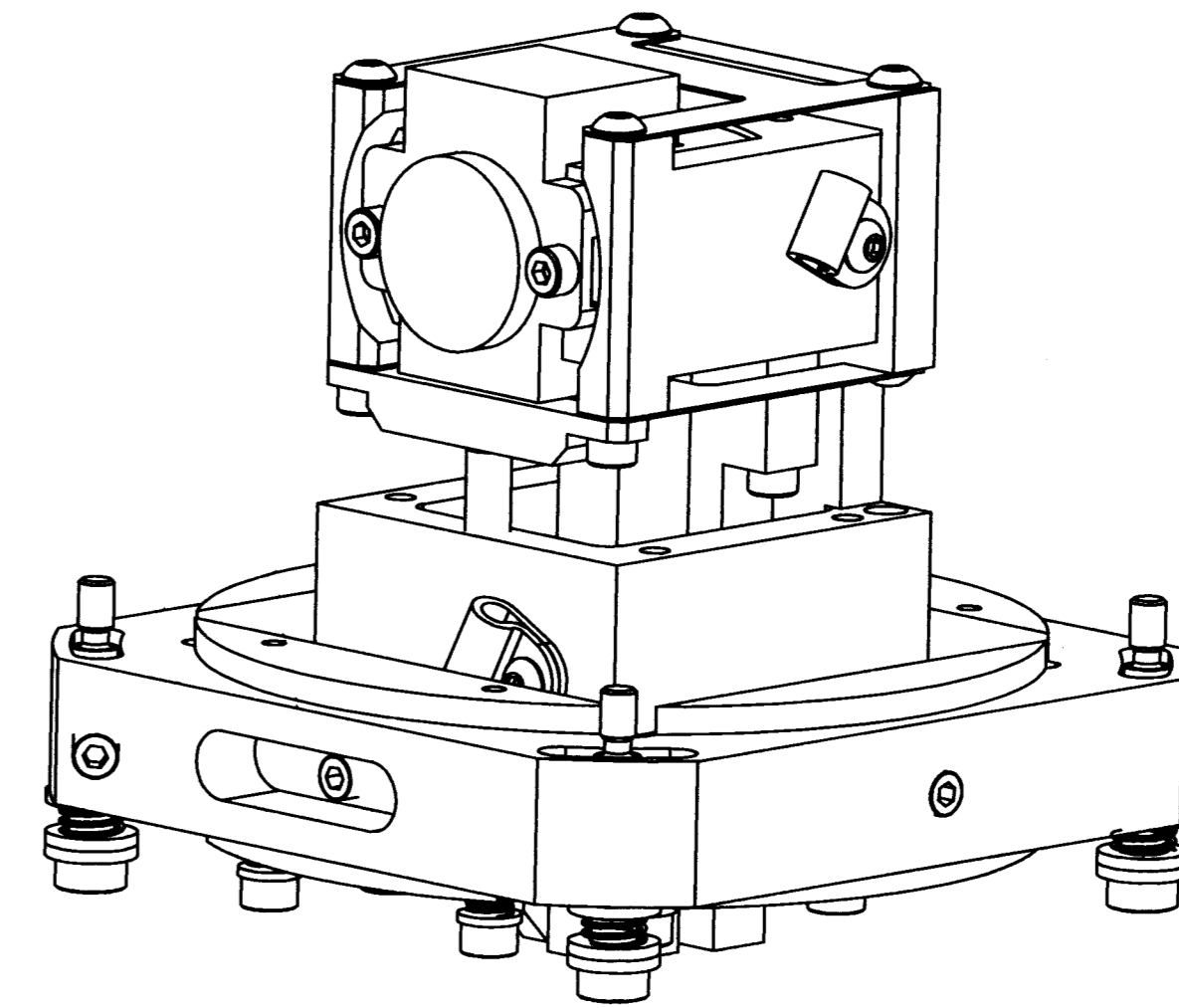
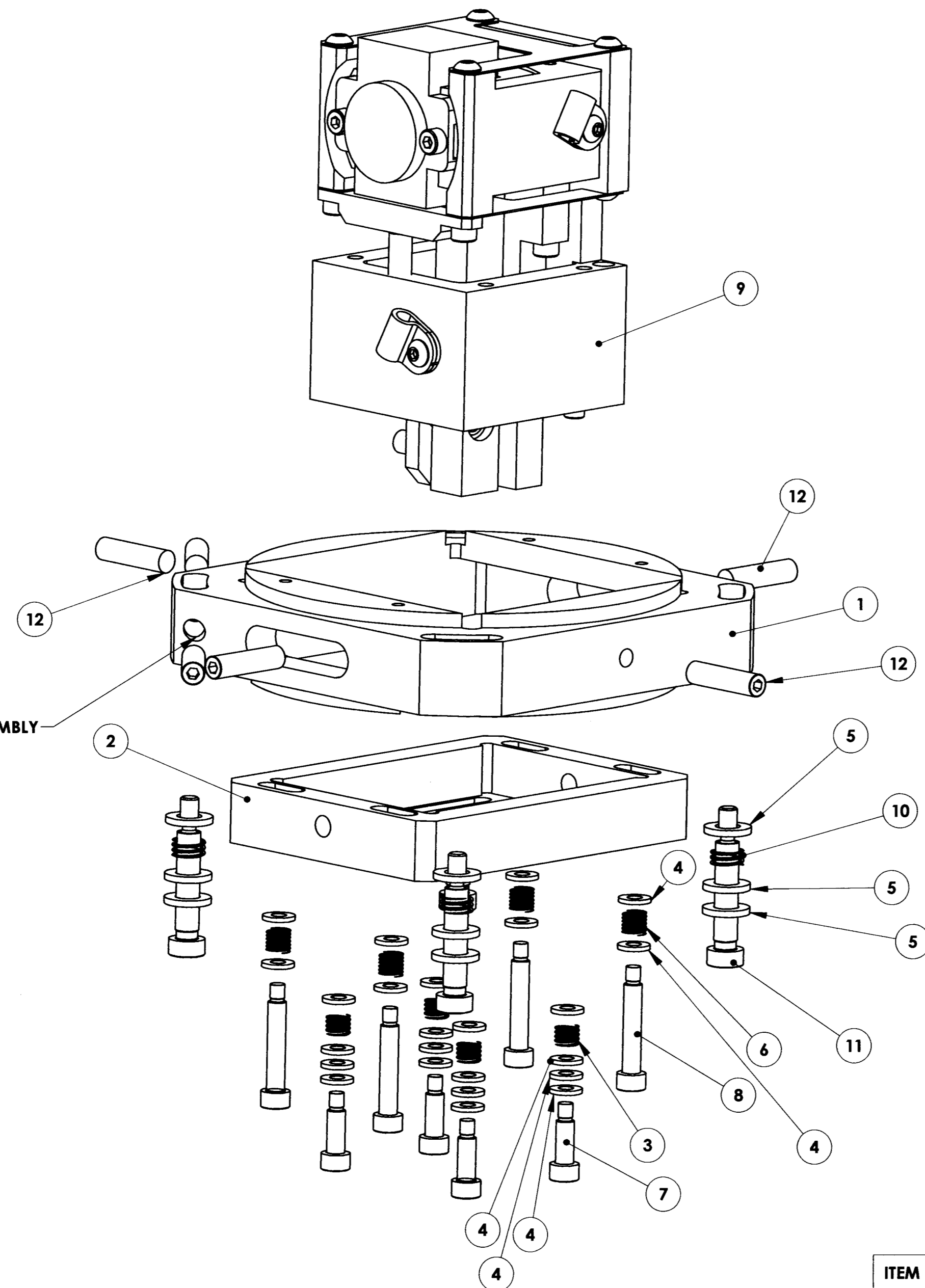


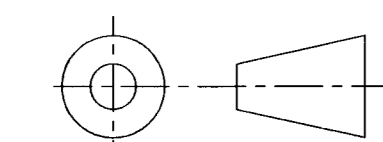
DRAWING NO. ASY-5964	REVISION REL-01
PROJECT CODE: LICK-51	
REQUIRED PER TELESCOPE: 8 ASSEMBLIES PER TELESCOPE	
MATERIAL: BY COMPONENT	
CONDITION: BY COMPONENT	
SURFACE FINISH: BY COMPONENT	
FINISH COLOR: BY COMPONENT	
APPROXIMATE MASS: 2884.10 gm	
REFERENCE DOCUMENTS:	

REV.	DATE	DESCRIPTION	CHKD	APPVD	ZONE
1	2/9/2005	INITIAL RELEASE	KLW	JSP	

Controlled Document
Confirm revision before using



2X CHASE THREADS THRU PRIOR TO ASSEMBLY
ORIENTATION OF THESE HOLES ARE CRITICAL FPR ASSEMBLY



DO NOT SCALE DRAWING

ITEM NO.	Default/QTY.	PART NUMBER	DESCRIPTION	Material	Weight
1	1	COM-5965	ENCODER MOUNT HUB	6061-T6 ALUMINUM	374.83
2	1	COM-5379	ENCODER TRANSLATION FRAME	6061-T6 ALUMINUM	140.24
3	4	spring_b_mcmaster94340k38_5mm			
4	24	B18.22M - Plain washer, 3.5 mm, narrow			
5	12	B18.22M - Plain washer, 6 mm, narrow	M6 FLAT WASHER ZINC PLATED ALLOY STEEL	ZINC PLATED STEEL	1
6	4	spring_b_mcmaster94340k38_6mm			
7	4	B18.3.3M - 6.5 x 10 SHSS --N			
8	4	B18.3.3M - 6.5 x 10 SHSS --N			
9	1	ASY-5380	ENCODER TOWER ASSY	BY COMPONENT	659.35
10	4	spring_a_mcmaster94340k7			
11	4	B18.3.3M - 6.5 x 30 SHSS --N	B18.3.3M - 8 x 60 SHSS --N		
12	6	1-4-80x1BallPlunger	THORLABS #F25SS-100		

COPYRIGHT

THIS DOCUMENT & ENCLOSED PROPRIETARY INFORMATION
REMAINS THE PROPERTY OF EOS TECHNOLOGIES, INC. THE
INTELLECTUAL PROPERTY AND INFORMATION HEREIN MAY NOT
BE COPIED NOR DISCLOSED WITHOUT WRITTEN CONSENT OF
EOS TECHNOLOGIES, INC. MANAGEMENT

UNLESS OTHERWISE SPECIFIED:

DIMENSIONS ARE IN MILLIMETERS
X.X = ±0.25MM
X.XX = ±0.10MM
ANGLES = ±0.5°

ROUNDS AND FILLETS ARE R3.0

BREAK ALL SHARP EDGES 0.25MM X 0.25MM

WELDS ARE: MAX SIZE FILLET OR
FULL PENETRATION GROOVE WELD
AS APPROPRIATE.

ALL WELDS ARE CONTINUOUS

NEAREST NOMINAL STOCK SIZE
MAY BE SUBSTITUTED UPON APPROVAL.

INDICATED MACHINED SURFACES 3.2

DESIGN	TW	DATE	1-Jan-02
DRAWN	AML	DATE	13-Jan-04
CHECKED	<i>Kevin Weeman</i>	DATE	2-10-05
APPROVED	<i>B.J. Pentland</i>	DATE	FEB 11 2005

EOS TECHNOLOGIES, INC.			
3160 E. TRANSCON WAY, SUITE 180, TUCSON, AZ 85706 PH: (520) 624-6399			
ENCODER MOUNT ASSEMBLY			
DRAWING NO.	ASY-5964	STATUS	Released
SCALE	1:1	REVISION	REL-01
SHEET	1 OF 1	SHEET SIZE	A1