

DRAWING NO. **ASY-5986** REVISION **REL-01**

PROJECT CODE: **LICK-51**

REQUIRED PER TELESCOPE: 4

MATERIAL: PER COMPONENT

CONDITION: PER COMPONENT

FINISH: SEE DOCUMENT 6400/340HP SERIES 6/01

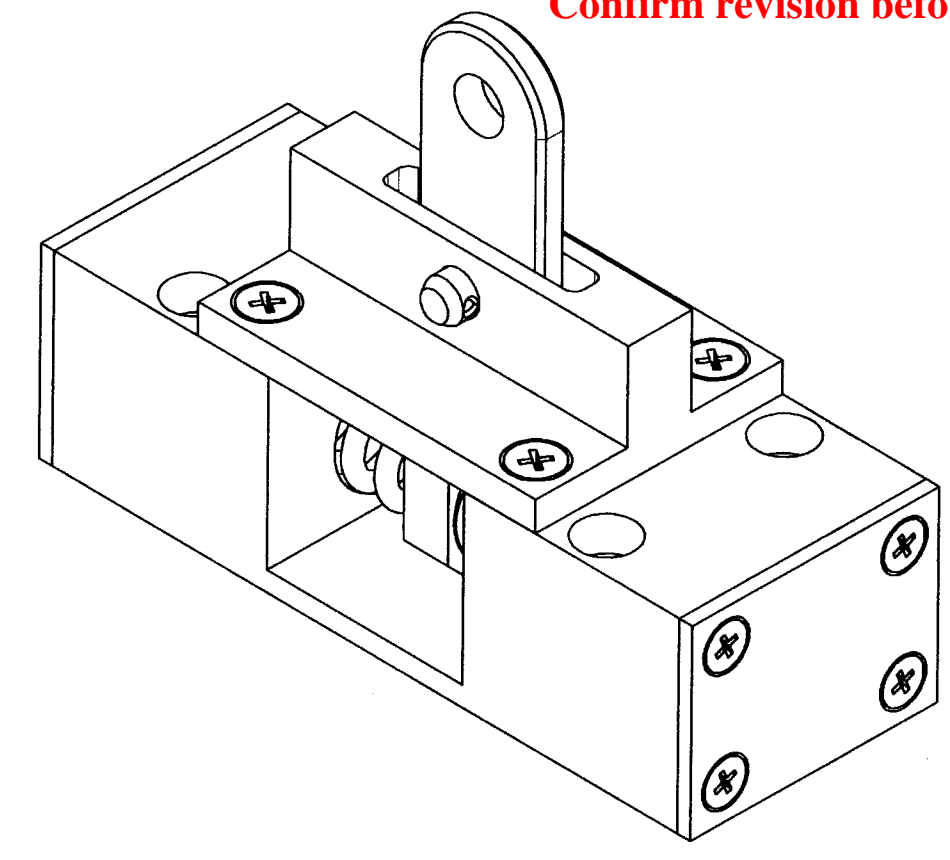
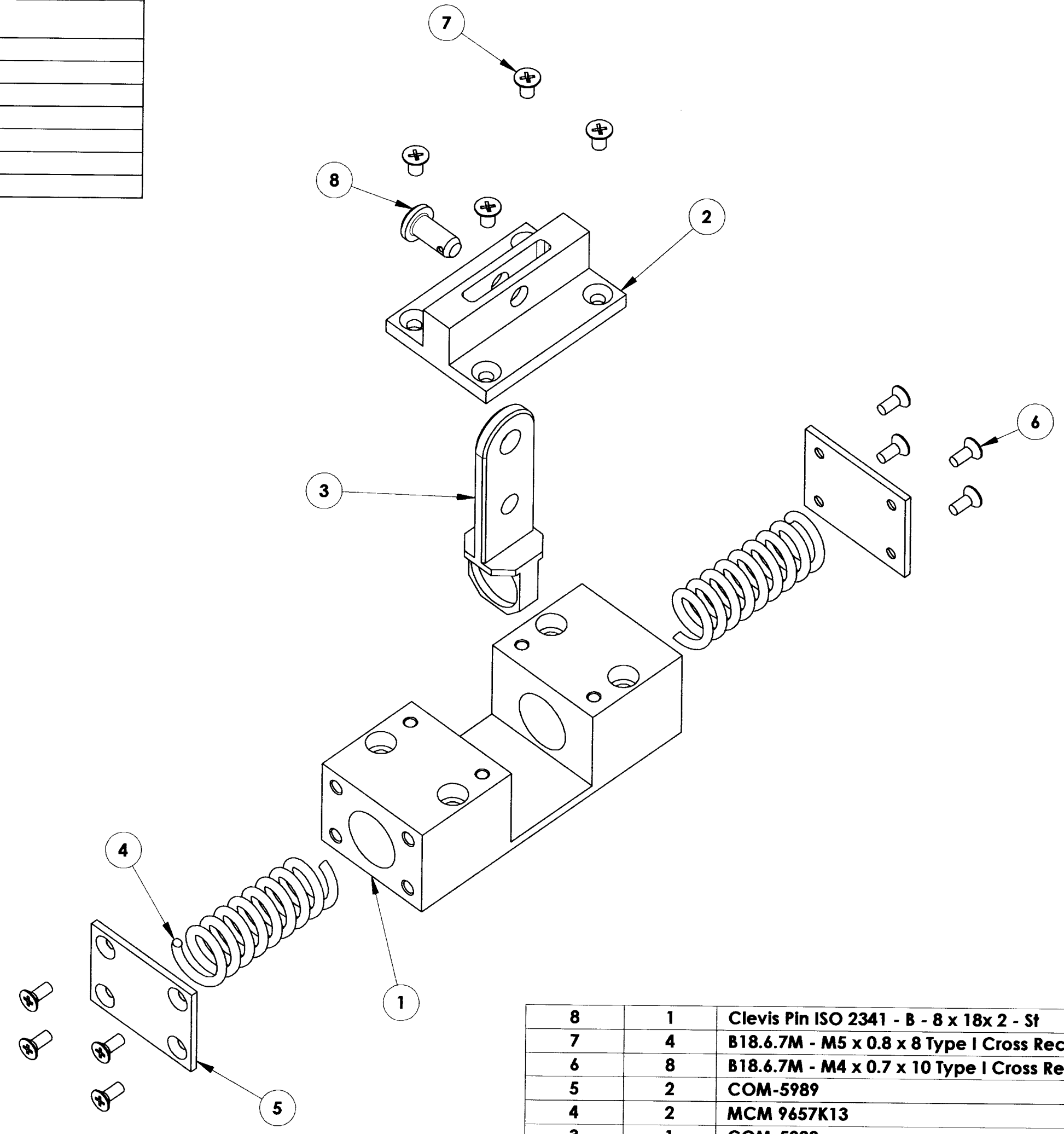
FINISH COLOR: WHITE

APPROXIMATE MASS: 1517.15 gm

REFERENCE DOCUMENTS:

REV.	DATE	DESCRIPTION	CHK'D	APPV'D	ZONE
1	4/27/05	INITIAL RELEASE	ETD	FJP	

Controlled Document
Confirm revision before using



ITEM NO.	QTY.	PART NUMBER	DESCRIPTION	Material	Weight
8	1	Clevis Pin ISO 2341 - B - 8 x 18x 2 - St			
7	4	B18.6.7M - M5 x 0.8 x 8 Type I Cross Recessed FHMS --8N			
6	8	B18.6.7M - M4 x 0.7 x 10 Type I Cross Recessed FHMS --10N			
5	2	COM-5989	ACTUATOR END PIECE COVER	12 GA. A-36 MILD STEEL	36.73
4	2	MCM 9657K13	STEEL COMPRESSION SPRING	ZINC PLATED STEEL	37.98
3	1	COM-5988	ACTUATOR END PIECE TAB	AISI 1020	98.04
2	1	COM-5990	ACTUATOR END PIECE PIVOT	AISI 1020	235.29
1	1	COM-5987	ACTUATOR END PIECE BODY	AISI 1020	1021.74

DO NOT SCALE DRAWING

COPYRIGHT
 THIS DOCUMENT & ENCLOSED PROPRIETARY INFORMATION REMAINS THE PROPERTY OF EOS TECHNOLOGIES, INC. THE INTELLECTUAL PROPERTY AND INFORMATION HEREIN MAY NOT BE COPIED NOR DISCLOSED WITHOUT WRITTEN CONSENT OF EOS TECHNOLOGIES, INC. MANAGEMENT

UNLESS OTHERWISE SPECIFIED:
 DIMENSIONS ARE IN MILLIMETERS
 TOLERANCES:
 X.X = ±0.25MM
 X.XX = ±0.10MM
 ANGLES = ±0.5°
 ROUNDS AND FILLETS ARE R3.0
 BREAK ALL SHARP EDGES
 0.25MM X 0.25MM

WELDS ARE:
 MAX SIZE FILLET OR
 FULL PENETRATION GROOVE
 AS APPROPRIATE.
 ALL WELDS ARE CONTINUOUS
 NEAREST NOMINAL STOCK SIZE
 MAY BE SUBSTITUTED.
 INDICATED MACHINED SURFACES

DESIGN	K. WASMER	DATE	4-20-05
DRAWN	K. WASMER	DATE	4-20-05
CHECKED	<i>S. Pole</i>	DATE	4/27/05
APPROVED	<i>E. J. Pentland</i>	DATE	4/28/05

EOS TECHNOLOGIES, INC.
 3160 E. TRANCON WAY, SUITE 180, TUCSON, AZ 85706 PH: (520) 624-6399

ACTUATOR END PIECE ASSEMBLY

DRAWING NO. **ASY-5986**

STATUS	Released	REVISION	REL-01	SHEET SIZE	A2
SHEET	1 OF 1	SCALE	3:4		