

DRAWING NO. **ASY-6519** REVISION **REL-03**

PROJECT CODE: **LICK-51**

REQUIRED PER TELESCOPE: 1

MATERIAL: PER COMPONENT

CONDITION: PER COMPONENT

SURFACE FINISH: PER COMPONENT

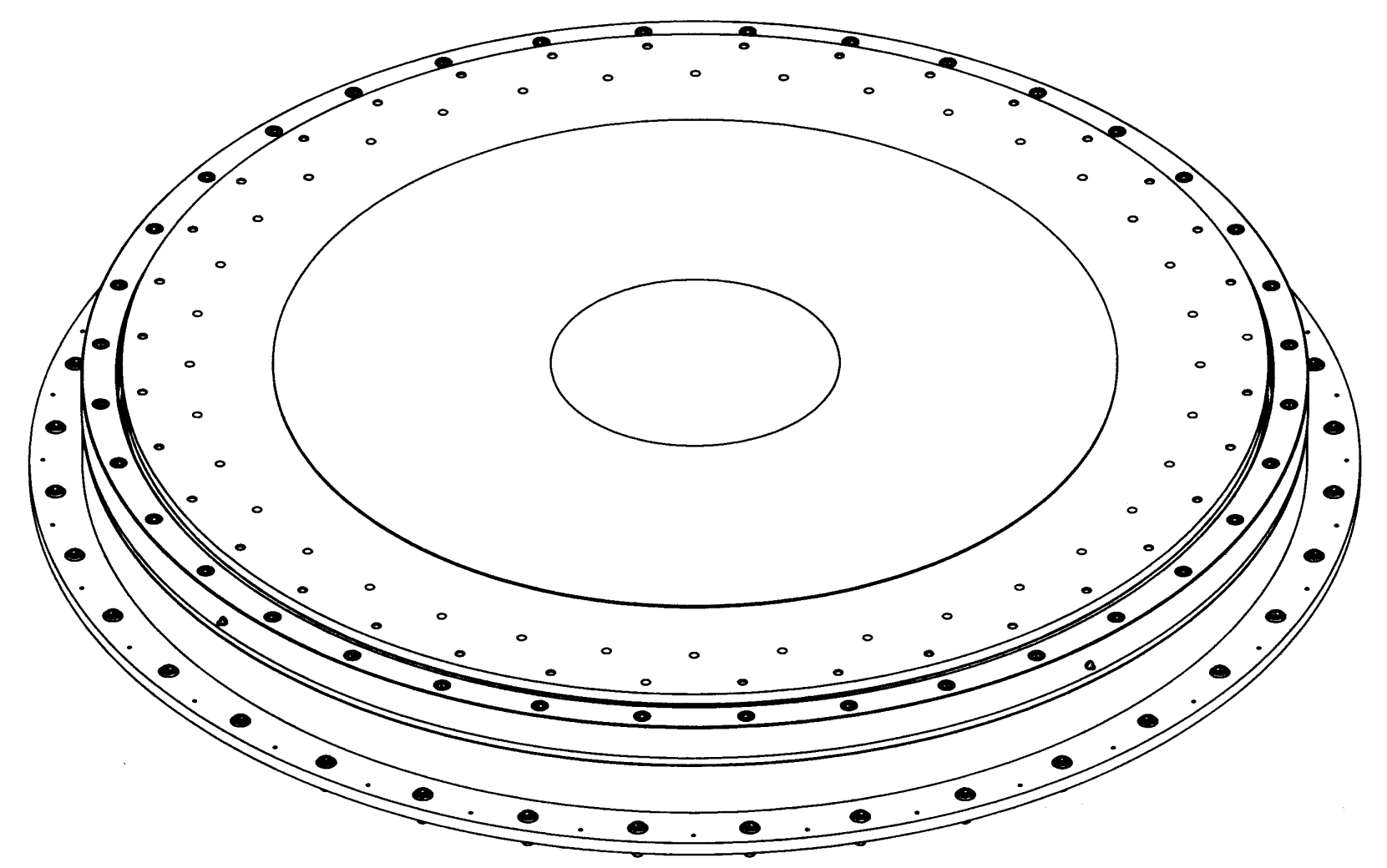
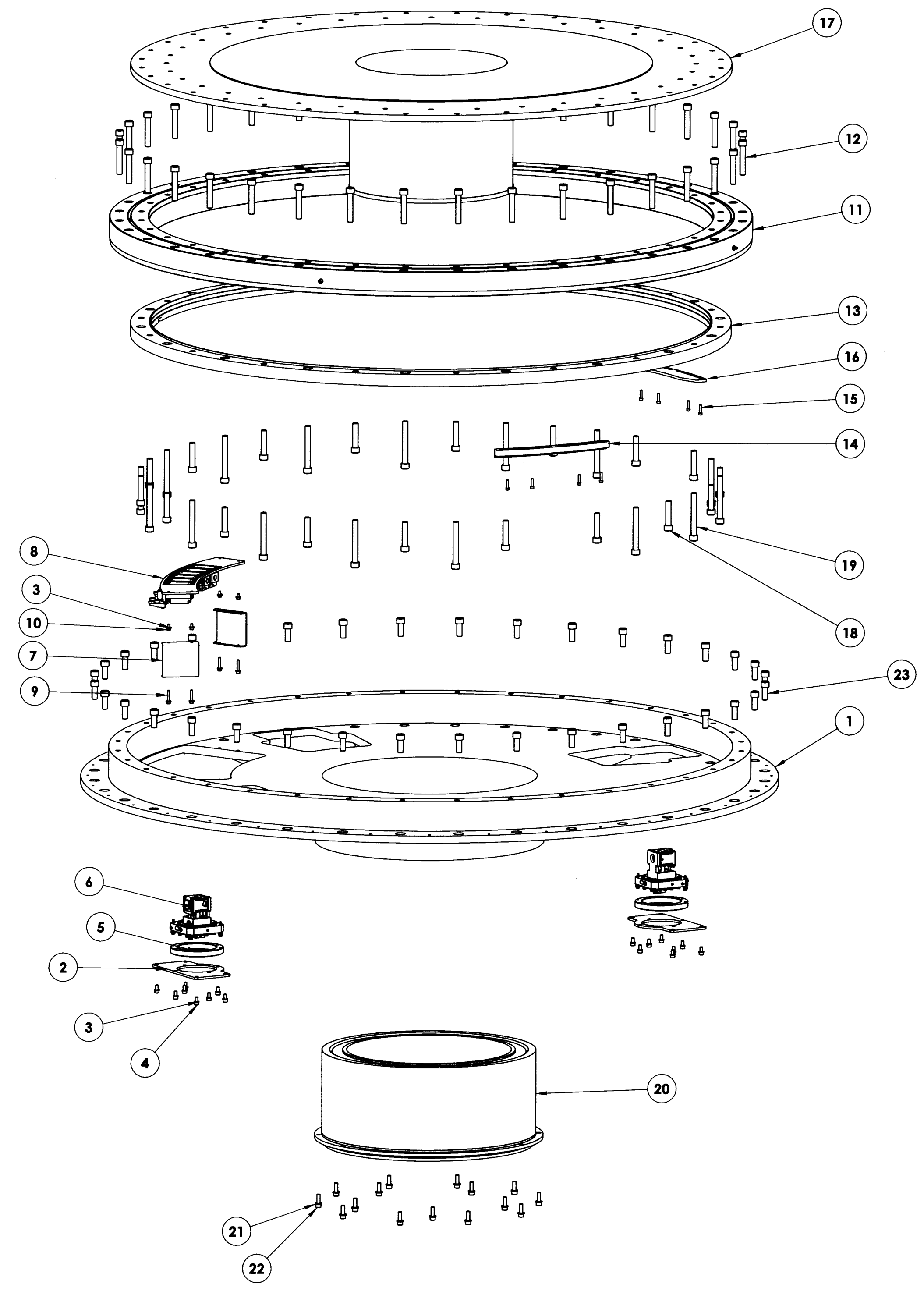
FINISH COLOR: PER COMPONENT

APPROXIMATE MASS: 2087936.75 gm

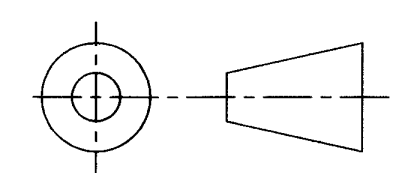
REFERENCE DOCUMENTS:

REV.	DATE	DESCRIPTION	CHKD	APPVD	ZONE
1	1-17-05	INITIAL RELEASE	E. DALE	G. PENTLAND	
2	9-16-05	REVISED PER ECO-0434	LRG	KG	
3	5-21-09	REVISE PER ECO-1179			

**Controlled Document**  
**Confirm revision before using**



ITEM NO.	Default/QTY.	PART NUMBER	DESCRIPTION	Material	Weight
23	36	B18.3.1M - 16 x 2.0 x 40 Hex SHCS -- 40NHX			
22	15	B18.3.1M - 10 x 1.5 x 30 Hex SHCS -- 30NHX			
21	15	Regular LW 0.4375			
20	1	MOTOR ASY QT 23512-10	QT-23515 10 IN STACK MOTOR		
19	16	B18.3.1M - 16 x 2.0 x 130 Hex SHCS -- 44NHX			
18	18	McM 91290A838	M16 X 2.0 X 75.0 LG SOCKET HEAD CAP SCREW	Plain Carbon Steel	160.745
17	1	COM-6524	DIRECT DRIVE TOP PLATE	AISI 1020	569370.64
16	1	COM-6528	AZIMUTH LIMIT SHORT DOG	304 STAINLESS STEEL	1020.63
15	8	B18.3.1M - 6 x 1.0 x 25 Hex SHCS -- 25NHX			
14	1	COM-6527	AZIMUTH LIMIT TALL DOG	304 STAINLESS STEEL	1885.28
13	1	COM-6531	AZIMUTH ENCODER RING	AISI 410 STAINLESS STEEL	91228.86
12	36	McM 91290A841	M16 X 2.0 X 90.0 LG SOCKET HEAD CAP SCREW	Plain Carbon Steel	184.269
11	1	ROTEK J8-72P3	BEARING	ROTEK J8-72P3	354924.97
10	4	B18.3.1M - 6 x 1.0 x 12 Hex SHCS -- 12NHX			
9	4	B18.3.1M - 6 x 1.0 x 35 Hex SHCS -- 24NHX			
8	1	ASY-5653	AZIMUTH LIMIT SWITCH ASSEMBLY	PER COMPONENT	9640.93
7	2	COM-6529	AZIMUTH LIMIT MOUNTING BRACKET	10 GAUGE SHEET - A-36	421.31
6	2	ASY-5964	ENCODER MOUNT ASSEMBLY	BY COMPONENT	2884.10
5	2	COM-6536	ENCODER MOUNT SPACER	ALUMINUM 6061 Alloy	392.17
4	16	B18.3.1M - 8 x 1.25 x 16 Hex SHCS -- 16NHX			
3	24	LW 0.3125			
2	2	COM-6530	ENCODER MOUNTING PLATE	1/4" PLATE - A-36	1287.20
1	1	COM-6523	DIRECT DRIVE BASE PLATE MACHINING	PER COMPONENT	827889.63



DO NOT SCALE DRAWING

<p><b>COPYRIGHT</b></p> <p>THIS DOCUMENT &amp; ENCLOSED PROPRIETARY INFORMATION REMAINS THE PROPERTY OF EOS TECHNOLOGIES, INC. THE INTELLECTUAL PROPERTY AND INFORMATION HEREIN MAY NOT BE COPIED NOR DISCLOSED WITHOUT WRITTEN CONSENT OF EOS TECHNOLOGIES, INC. MANAGEMENT</p>		<p>UNLESS OTHERWISE SPECIFIED:</p> <p>DIMENSIONS ARE IN MILLIMETERS</p> <p>X.X = ±0.25MM</p> <p>X.XX = ±0.10MM</p> <p>ANGLES = ±0.5°</p> <p>ROUNDS AND FILLETS ARE R3.0</p> <p>BREAK ALL SHARP EDGES 0.25MM X 0.25MM</p>		<p>WELDS ARE: MAX SIZE FILLET OR FULL PENETRATION GROOVE WELD AS APPROPRIATE.</p> <p>ALL WELDS ARE CONTINUOUS</p> <p>NEAREST NOMINAL STOCK SIZE MAY BE SUBSTITUTED UPON APPROVAL.</p> <p>INDICATED MACHINED SURFACES <sup>3.2</sup></p>		<p>DESIGN: K. WASMER DATE: 1-7-05</p> <p>DRAWN: K. WASMER DATE: 1-7-05</p> <p>CHECKED: E. DALE DATE: 1-17-05</p> <p>APPROVED: G. PENTLAND DATE: 1-17-05</p>		<p><b>EOS TECHNOLOGIES, INC.</b></p> <p>3160 E. TRANSCON WAY, SUITE 180, TUCSON, AZ 85706 PH: (520) 624-6399</p> <p>TITLE: <b>AZIMUTH DIRECT DRIVE ASSEMBLY</b></p> <p>DRAWING NO. <b>ASY-6519</b></p> <p>SCALE 1:10</p>		<p>STATUS: Released</p> <p>REVISION: <b>REL-03</b></p> <p>SHEET SIZE: <b>A1</b></p> <p>SHEET 1 OF 2</p>	
--	--	--	--	---	--	---	--	--	--	---	--