

DRAWING NO. **ASY-7054** REVISION **REL-03**

PROJECT CODE: **LICK-51**

REQUIRED PER TELESCOPE: 1

MATERIAL: PER COMPONENT

CONDITION: PER COMPONENT

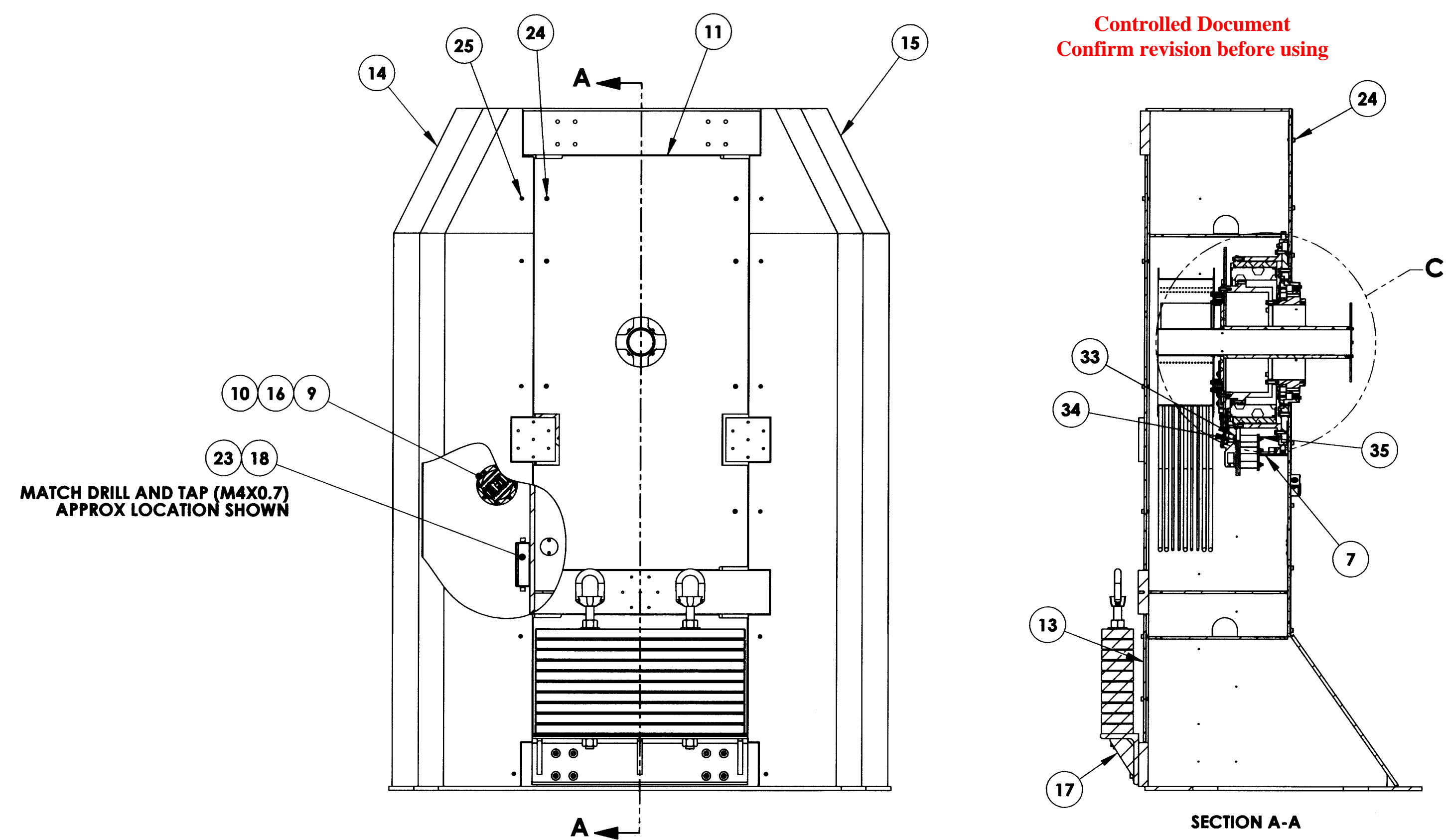
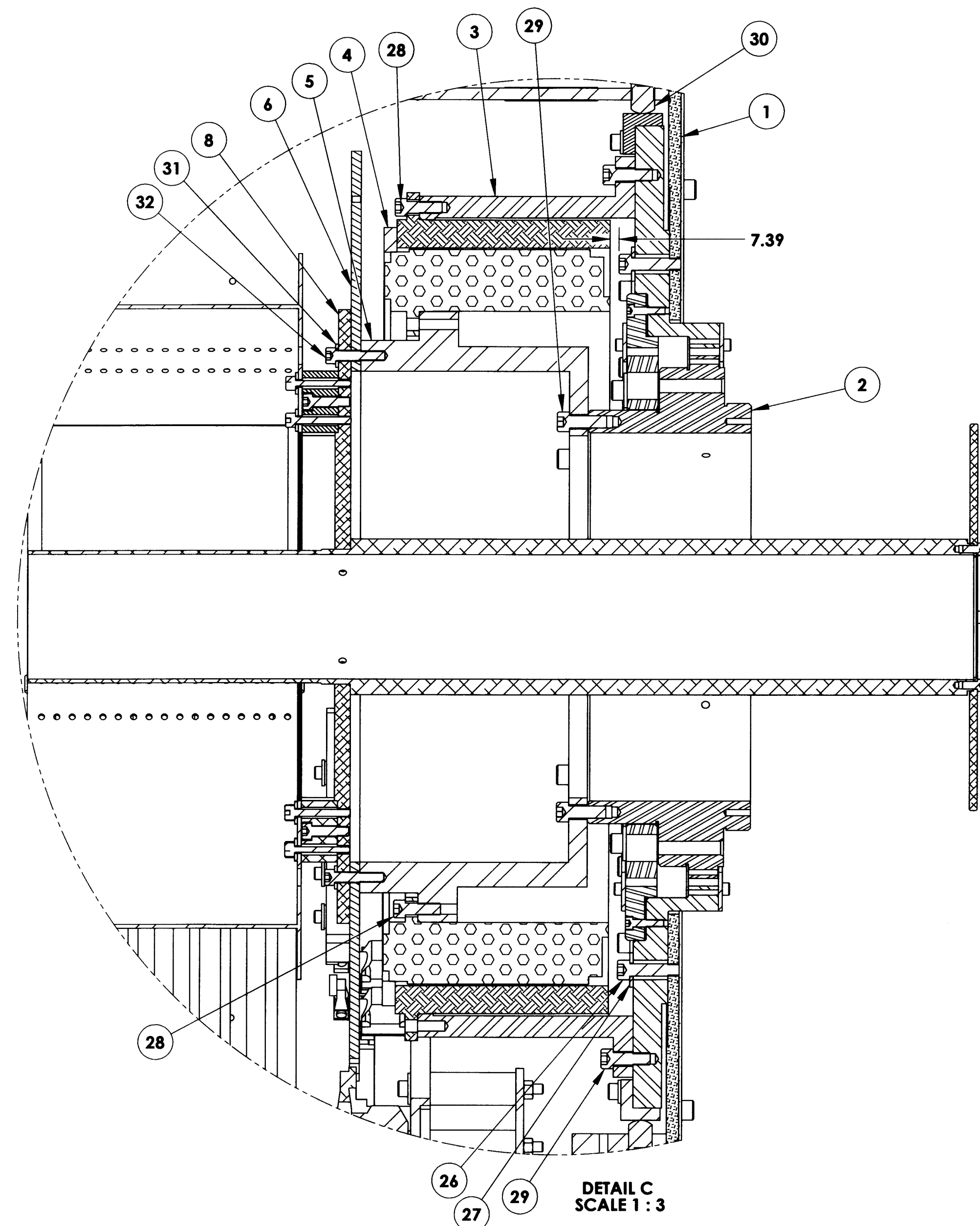
SURFACE FINISH: PER COMPONENT

FINISH COLOR: PER COMPONENT

APPROXIMATE MASS: 2588989.69 gm

REFERENCE DOCUMENTS:

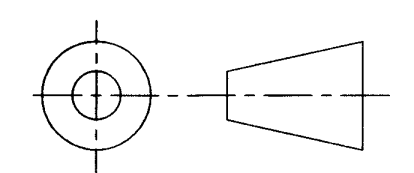
REV.	DATE	DESCRIPTION	CHKD	APPVD	ZONE
1	6/13/05	INITIAL RELEASE	ETD	GJP	
2	8/28/06	REVISED PER ECO #0796	KG	KG	
3	6/19/2009	REVISE PER ECO 1460	<i>FDG</i>	<i>UN</i>	



Controlled Document  
Confirm revision before using

LICK

ITEM NO.	Default/QTY.	PART NUMBER	DESCRIPTION	Material	Weight
36	8	B18.3.1M - 8 x 1.25 x 30 Hex SHCS -- 30NHX			
35	6	B18.2.4.2M - Hex nut, Style 2, M8 x 1.25 --D-N			
34	6	B18.3.1M - 8 x 1.25 x 110 Hex SHCS -- 28NHX		ZINC PLATED ALLOY STEEL	0
33	6	B18.22M - Plain washer, 8 mm, regular			
32	4	B18.3.1M - 8 x 1.25 x 40 Hex SHCS -- 28NHX			
31	4	B18.22M - Plain washer, 8 mm, narrow	M8 Plain washer, narrow	ZINC PLATED STEEL	4
30	4	SSOVALSKT 0.75-16x1.25-HX-N			
29	20	B18.3.1M - 10 x 1.5 x 30 Hex SHCS -- 30NHX			
28	10	HX-SHCS 0.375-24x1.125x1.125-N			
27	16	B18.22M - Plain washer, 10 mm, regular		ZINC PLATED ALLOY STEEL	0
26	16	B18.3.1M - 10 x 1.5 x 40 Hex SHCS -- 40NHX			
25	12	B18.3.1M - 8 x 1.25 x 16 Hex SHCS -- 16NHX			
24	30	B18.3.1M - 10 x 1.5 x 16 Hex SHCS -- 16NHX			
23	4	B18.3.1M - 4 x 0.7 x 20 Hex SHCS -- 20NHX			
22	20	0141317	BHCS, M6-1.0 X 10	FASTENAL, ZINC PLATED ALLOY STEEL	8.95
21	8	0141390	FHCS, M6-1.0 X 16	FASTENAL, ZINC PLATED ALLOY STEEL	3.40
20	2	COM-5809	STAYPIN RECEIVER	304 STAINLESS STEEL	189
19	4	COM-7996	FORK TINE HOLE COVER SMALL	AISI 1020 14 GA. SHEET	56.52
18	2	CPP-11690	INTERPOLATOR, ENCODER	VARIOUS, HEIDENHAIN EXE660B	813.28
17	1	ASY-7945	COUNTERWEIGHT ASSEMBLY	PER COMPONENT	372187.52
16	8	B18.3.5M - 6 x 1.0 x 45 Socket FHCS -- 24N			
15	1	ASY-7238	RH TINE SKIN WELDMENT	PER COMPONENT	25874.44
14	1	ASY-7232	LH TINE SKIN WELDMENT	PER COMPONENT	25873.48
13	1	COM-7236	TINE LOWER SKIN	A36 Structural Steel	31874.74
12	6	COM-7995	FORK TINE HOLE COVER LARGE	AISI 1020 14 GA. SHEET	300.16
11	1	COM-7235	TINE UPPER SKIN	A36 Structural Steel	99109.30
10	2	ASY-5964	ENCODER MOUNT ASSEMBLY	BY COMPONENT	1997.55
9	2	COM-6637	ELEVATION ENCODER STANDOFF	6061 Alloy	828.05
8	1	ASY-5937	ELEVATION CABLE WRAP	AS SUPPLIED	28583
7	1	COM-7544	ELEVATION LIMIT SWITCH BRACKET	PLAIN CARBON STEEL	10492.70
6	1	ASY-7781	ELEVATION LIMIT SWITCH ASSEMBLY	PER COMPONENT	41279.19
5	1	COM-7133	ROTOR COUPLING	A36 STEEL	56747.74
4	1	MOTOR ASY QT 23514-5			
3	1	COM-7134	STATOR COUPLING	A36 STEEL	58563.16
2	1	ASY-5076	ELEVATION DRIVE BEARING ASSEMBLY	BY COMPONENT	126251.51
1	1	COM-5372	TINE STRUCTURE - MACHINED	PER COMPONENT	1600519.81134797
ITEM NO.	Default/QTY.	PART NUMBER	DESCRIPTION	Material	Weight



DO NOT SCALE DRAWING

**COPYRIGHT**

THIS DOCUMENT & ENCLOSED PROPRIETARY INFORMATION REMAINS THE PROPERTY OF EOS TECHNOLOGIES, INC. THE INTELLECTUAL PROPERTY AND INFORMATION HEREIN MAY NOT BE COPIED NOR DISCLOSED WITHOUT WRITTEN CONSENT OF EOS TECHNOLOGIES, INC. MANAGEMENT

**UNLESS OTHERWISE SPECIFIED:**

DIMENSIONS ARE IN MILLIMETERS  
 X.X = ±0.25MM  
 X.XX = ±0.10MM  
 ANGLES = ±0.5°  
 ROUNDS AND FILLETS ARE R3.0  
 BREAK ALL SHARP EDGES 0.25MM X 0.25MM

**WELDS ARE: MAX SIZE FILLET OR FULL PENETRATION GROOVE WELD AS APPROPRIATE.**

ALL WELDS ARE CONTINUOUS  
 NEAREST NOMINAL STOCK SIZE MAY BE SUBSTITUTED UPON APPROVAL.  
 INDICATED MACHINED SURFACES

DESIGN	E. DALE	DATE	5-5-05
DRAWN	K. WASMER	DATE	5-12-05
CHECKED	E. DALE	DATE	6/13/05
APPROVED	G. PENTLAND	DATE	6/13/05

**EOS TECHNOLOGIES, INC.**  
 3160 E. TRANSCON WAY, SUITE 180, TUCSON, AZ 85706 PH: (520) 624-6399

**RIGHT FORK ASSEMBLY**

DRAWING NO. **ASY-7054** STATUS Released REVISION **REL-03** SHEET SIZE **A1**

SCALE 1:15 SHEET 1 OF 2