

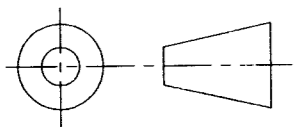
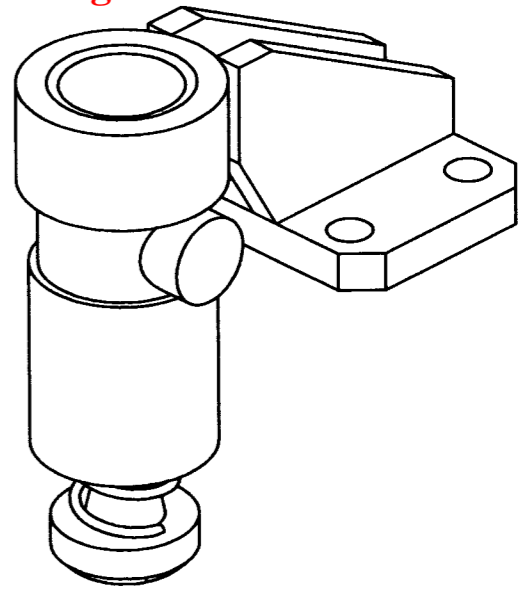
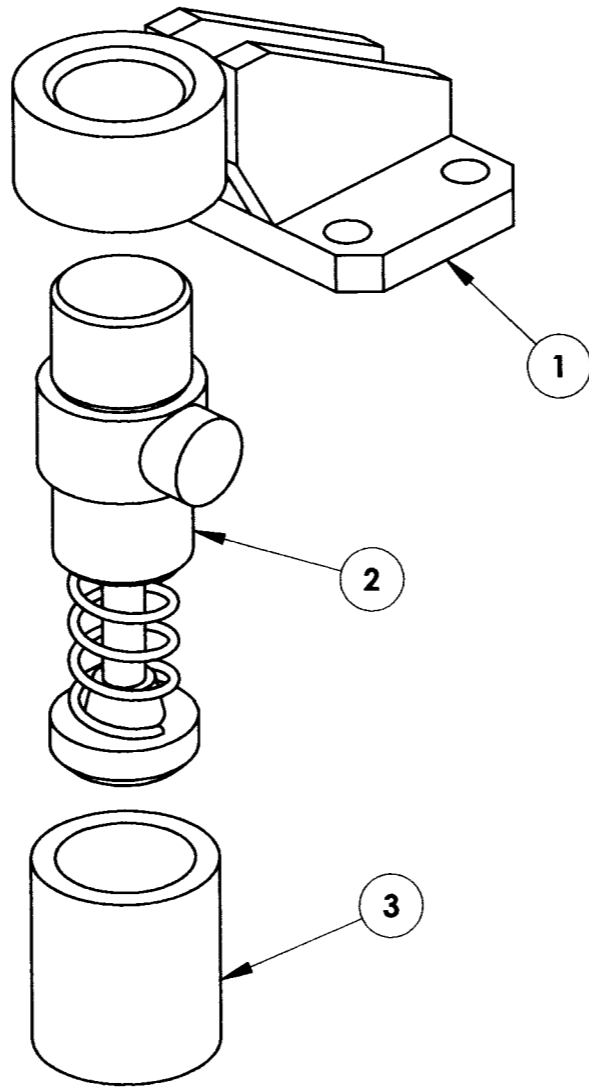
|                                |                           |
|--------------------------------|---------------------------|
| DRAWING NO.<br><b>ASY-7211</b> | REVISION<br><b>REL-01</b> |
| PROJECT CODE: <b>LICK-51</b>   |                           |
| REQUIRED PER TELESCOPE: 2      |                           |
| MATERIAL: PER COMPONENT        |                           |
| CONDITION: PER COMPONENT       |                           |
| SURFACE FINISH: PER COMPONENT  |                           |
| FINISH COLOR: PER COMPONENT    |                           |
| APPROXIMATE MASS: 3671.49 gm   |                           |
| REFERENCE DOCUMENTS:           |                           |

**COPYRIGHT**

THIS DOCUMENT & ENCLOSED PROPRIETARY INFORMATION REMAINS THE PROPERTY OF EOS TECHNOLOGIES, INC. THE INTELLECTUAL PROPERTY AND INFORMATION HEREIN MAY NOT BE COPIED NOR DISCLOSED WITHOUT WRITTEN CONSENT OF EOS TECHNOLOGIES, INC. MANAGEMENT

| REV. | DATE   | DESCRIPTION     | CHK'D | APPV'D | ZONE |
|------|--------|-----------------|-------|--------|------|
| 1    | 5/3/05 | INITIAL RELEASE | ETD   | RP     |      |

**Controlled Document**  
**Confirm revision before using**



**DO NOT SCALE DRAWING**

| ITEM NO. | QTY. | PART NUMBER            | DESCRIPTION                 | Material        | Weight  |
|----------|------|------------------------|-----------------------------|-----------------|---------|
| 3        | 1    | ENIDINE SC M42 X1.5X1  | SHOCK ABSORBER STOP COLLAR  |                 | 407.37  |
| 2        | 1    | ENIDINE LROEM 1.5M X 1 | HYDRAULIC SHOCK ABSORBER    |                 | 1459.84 |
| 1        | 1    | COM-7205               | ELEVATION BUMP STOP BRACKET | A-36 MILD STEEL | 1804.28 |

UNLESS OTHERWISE SPECIFIED:  
 DIMENSIONS ARE IN MILLIMETERS  
 X.X = ±0.25  
 X.XX = ±0.10  
 ANGLES = ±0.5°  
 ROUNDS AND FILLETS ARE R3.0  
 BREAK ALL SHARP EDGES  
 0.25MM X 0.25MM  
 INDICATED MACHINED SURFACES 3.2 ✓

|                                   |                        |
|-----------------------------------|------------------------|
| DESIGN<br><b>K. WASMER</b>        | DATE<br><b>3-21-05</b> |
| DRAWN<br><b>K. WASMER</b>         | DATE<br><b>3-21-05</b> |
| CHECKED<br><i>S. J. Pentland</i>  | DATE<br><b>5/3/05</b>  |
| APPROVED<br><i>B. J. Pentland</i> | DATE<br><b>5-3-05</b>  |

**EOS TECHNOLOGIES, INC.**  
TECHNOLOGIES, INC. 3160 E. TRANCON WAY, SUITE 180, TUCSON, AZ 85706 PH: (520) 624-6399

**ELEVATION BUMP STOP ASSEMBLY**

|                                |                           |                           |                         |
|--------------------------------|---------------------------|---------------------------|-------------------------|
| DRAWING NO.<br><b>ASY-7211</b> | STATUS<br><b>Released</b> | REVISION<br><b>REL-01</b> | SHEET SIZE<br><b>A3</b> |
| SCALE 1:2                      |                           |                           |                         |