

DRAWING NO. **ASY-7299** REVISION **REL-05**

PROJECT CODE: **LICK-51**

REQUIRED PER TELESCOPE: 1

MATERIAL: PER COMPONENT

CONDITION: PER COMPONENT

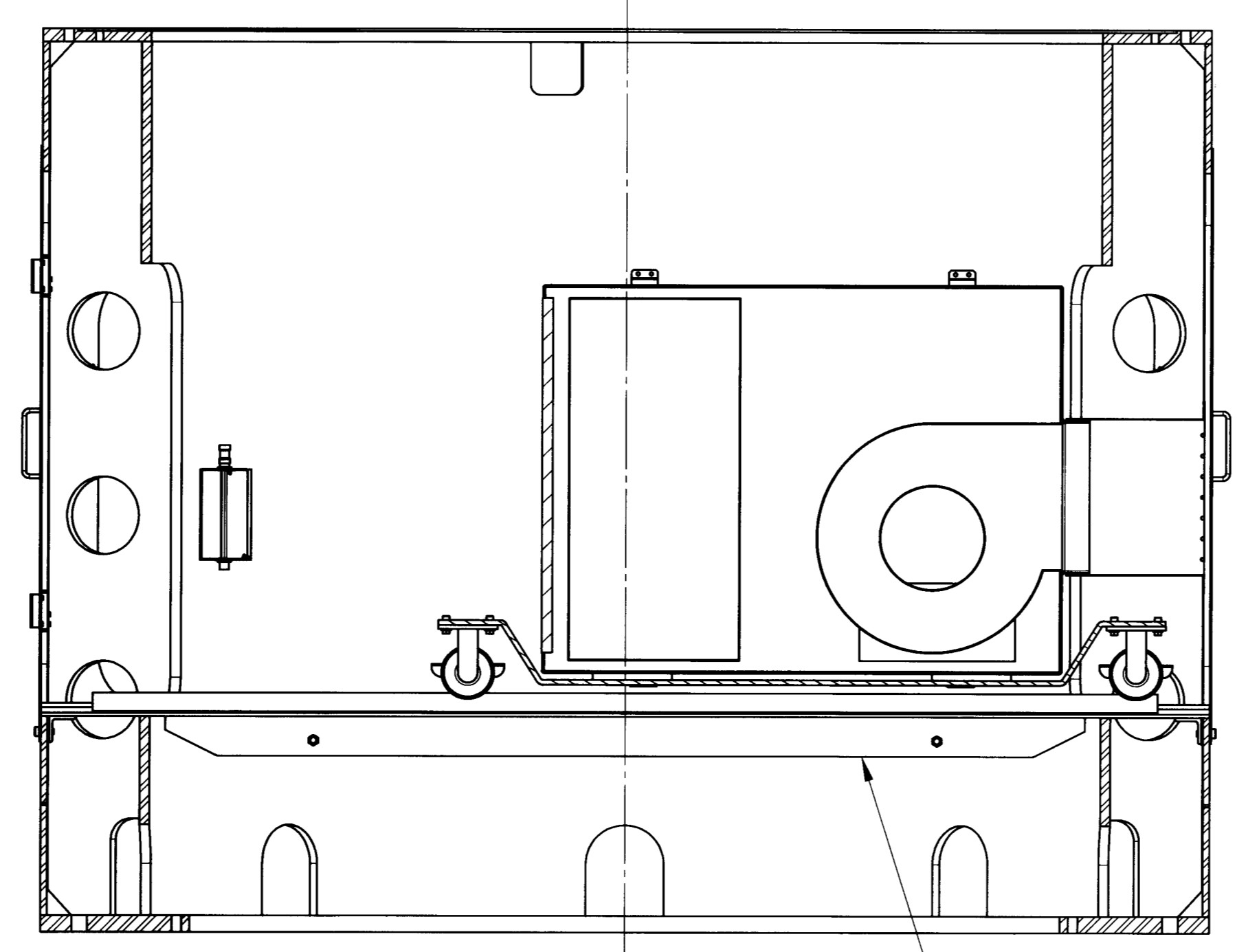
SURFACE FINISH: PER COMPONENT

FINISH COLOR: PER COMPONENT

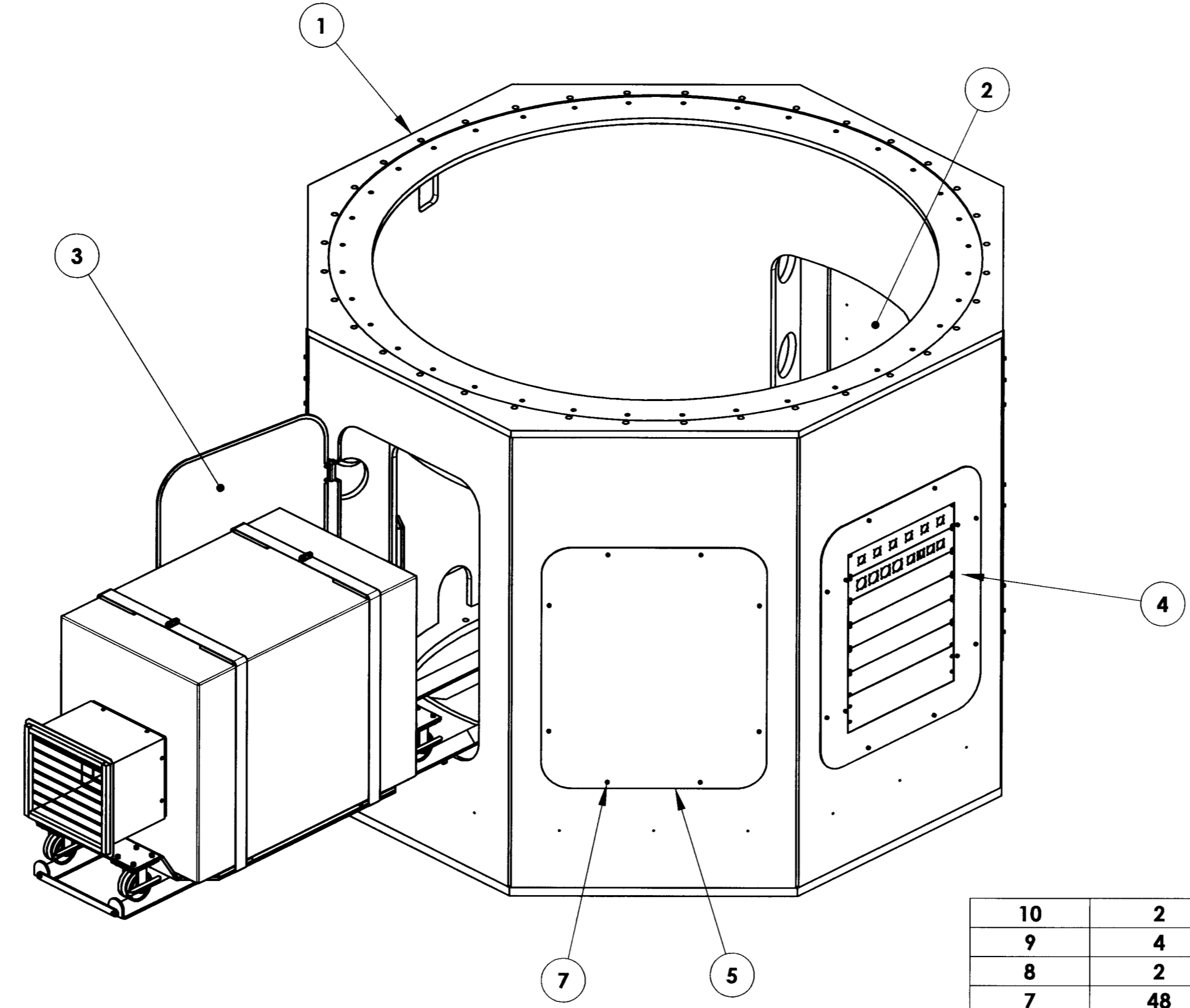
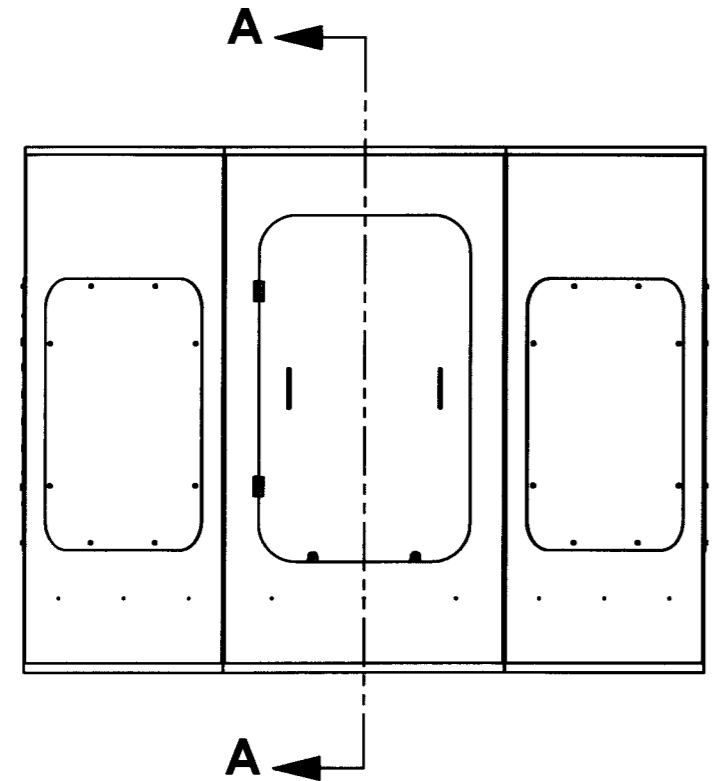
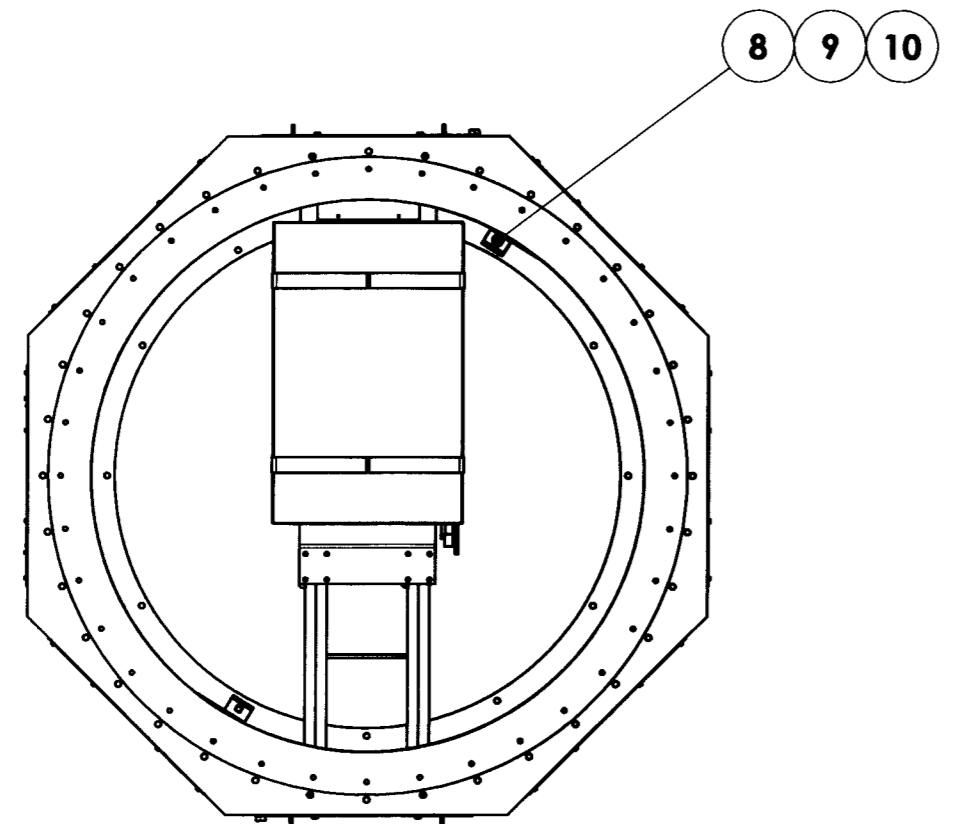
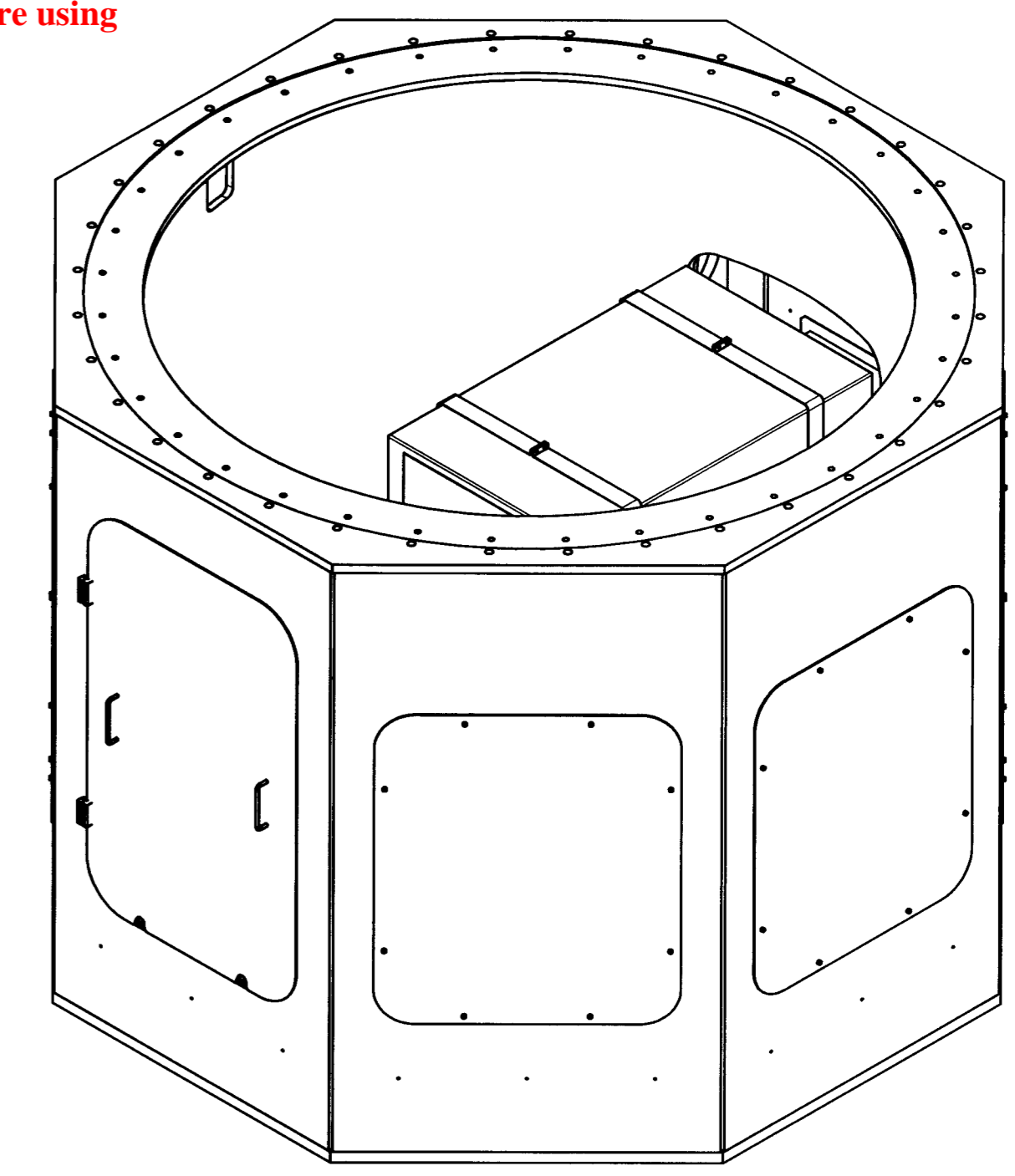
APPROXIMATE MASS: 3672000.61 gm

REFERENCE DOCUMENTS:

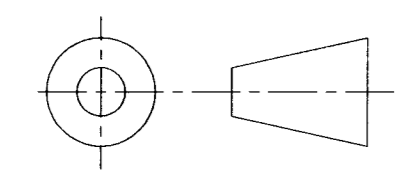
REV.	DATE	DESCRIPTION	CHK'D	APP'VD	ZONE
1	6-13-05	INITIAL RELEASE	E. DALE	G. PENTLAND	
2	7-29-05	REVISED PER ECO-0365	K. WASMER	K. GONZALES	
3	11-21-05	REVISED PER ECO 0501	KW. KC	KG	
4	8/28/06	REVISED PER ECO 0796	KC	KG	
5	9/2/2008	REVISED PER ECO-1178			



SECTION A-A



ITEM NO.	Default/QTY.	PART NUMBER	DESCRIPTION	Material	Weight
10	2	CPP-7862	CONNECTOR, ADAPTOR	VARIES, HEIDENHAIN 373848-01	52.51
9	4	B18.3.1M - 4 x 0.7 x 20 Hex SHCS -- 20NHX			
8	2	CPP-11690	INTERPOLATOR, ENCODER	VARIOUS, HEIDENHAIN EXE660B	813.28
7	48	B18.3.1M - 6 x 1.0 x 16 Hex SHCS -- 16NHX			
6	1	ASY-8477	BASE RAIL ASSEMBLY	PER COMPONENT	145496.64
5	5	COM-8034	BASE PANEL	A36 STEEL PLATE - 1/8" THK	16256.17
4	1	ASY-5635	BASE CABLE PANEL ASSEMBLY	BY COMPONENT	13209.18
3	1	ASY-8037	BASE ACCESS DOOR ASSEMBLY	PER COMPONENT	9074.89
2	1	ASY-10076	BASE ACCESS DOOR ASSEMBLY	PER COMPONENT	10381.16
1	1	COM-6938	BASE MACHINED	PER COMPONENT	3410504.52



DO NOT SCALE DRAWING

COPYRIGHT

THIS DOCUMENT & ENCLOSED PROPRIETARY INFORMATION REMAINS THE PROPERTY OF EOS TECHNOLOGIES, INC. THE INTELLECTUAL PROPERTY AND INFORMATION HEREIN MAY NOT BE COPIED NOR DISCLOSED WITHOUT WRITTEN CONSENT OF EOS TECHNOLOGIES, INC. MANAGEMENT

UNLESS OTHERWISE SPECIFIED:

DIMENSIONS ARE IN MILLIMETERS
 X.X = ±0.25MM
 X.XX = ±0.10MM
 ANGLES = ±0.5°

ROUNDS AND FILLETS ARE R3.0

BREAK ALL SHARP EDGES 0.25MM X 0.25MM

WELDS ARE: MAX SIZE FILLET OR FULL PENETRATION GROOVE WELD AS APPROPRIATE.

ALL WELDS ARE CONTINUOUS

NEAREST NOMINAL STOCK SIZE MAY BE SUBSTITUTED UPON APPROVAL.

INDICATED MACHINED SURFACES

DESIGN	DATE
K. WASMER	5-17-05
DRAWN	DATE
K. WASMER	5-17-05
CHECKED	DATE
E. DALE	6-13-05
APPROVED	DATE
G. PENTLAND	6-13-05

EOS TECHNOLOGIES, INC.
 3160 E. TRANSCON WAY, SUITE 180, TUCSON, AZ 85706 PH: (520) 624-6399

BASE ASSEMBLY

DRAWING NO. **ASY-7299** STATUS Released REVISION **REL-05** SHEET SIZE **A1**

SHEET 1 OF 1 SCALE 1:10