

DRAWING NO. **ASY-7990** REVISION **REL-02**

PROJECT CODE: **LICK-51**

REQUIRED PER TELESCOPE: 1

MATERIAL: PER COMPONENT

CONDITION: PER COMPONENT

SURFACE FINISH: PER COMPONENT

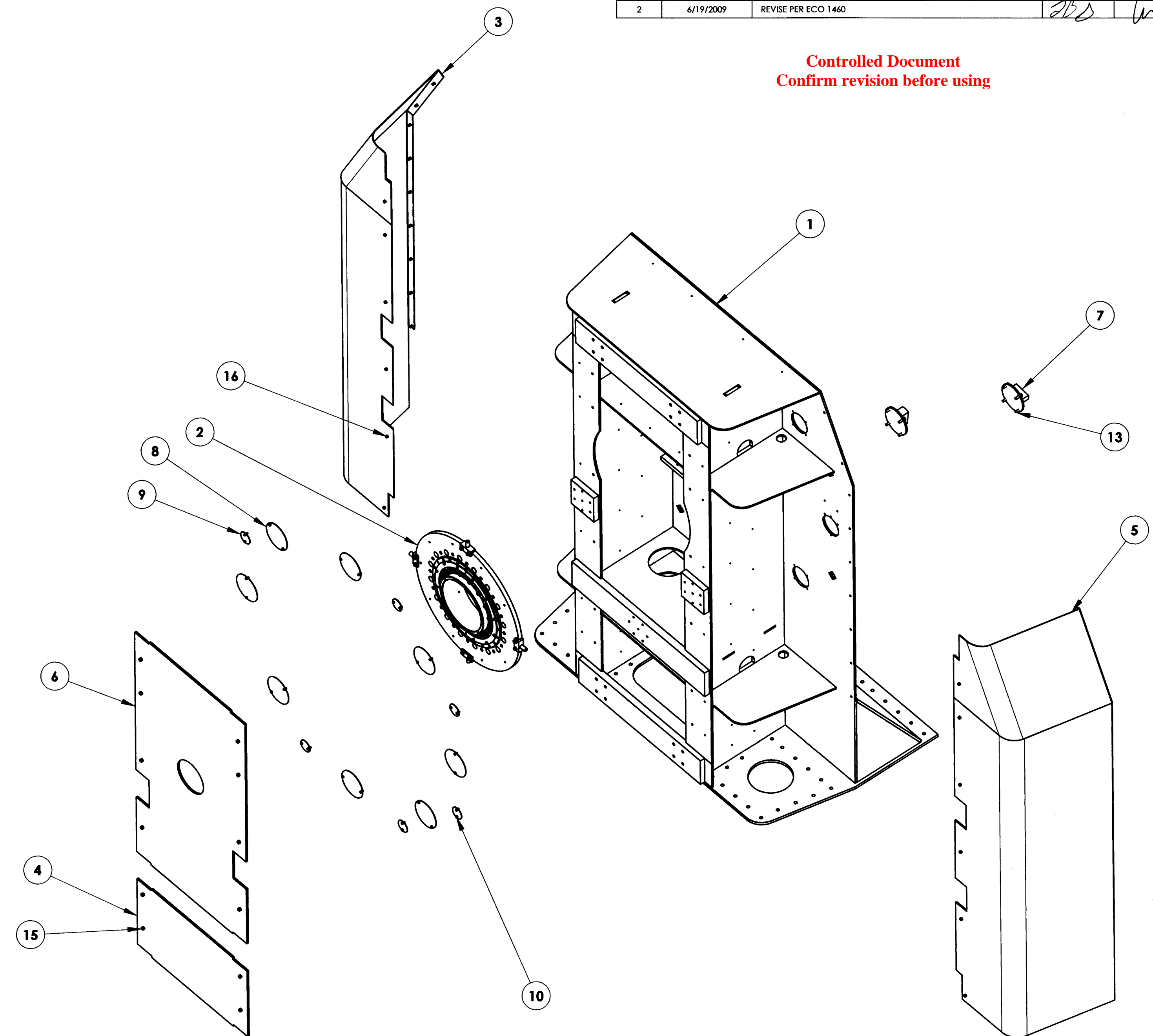
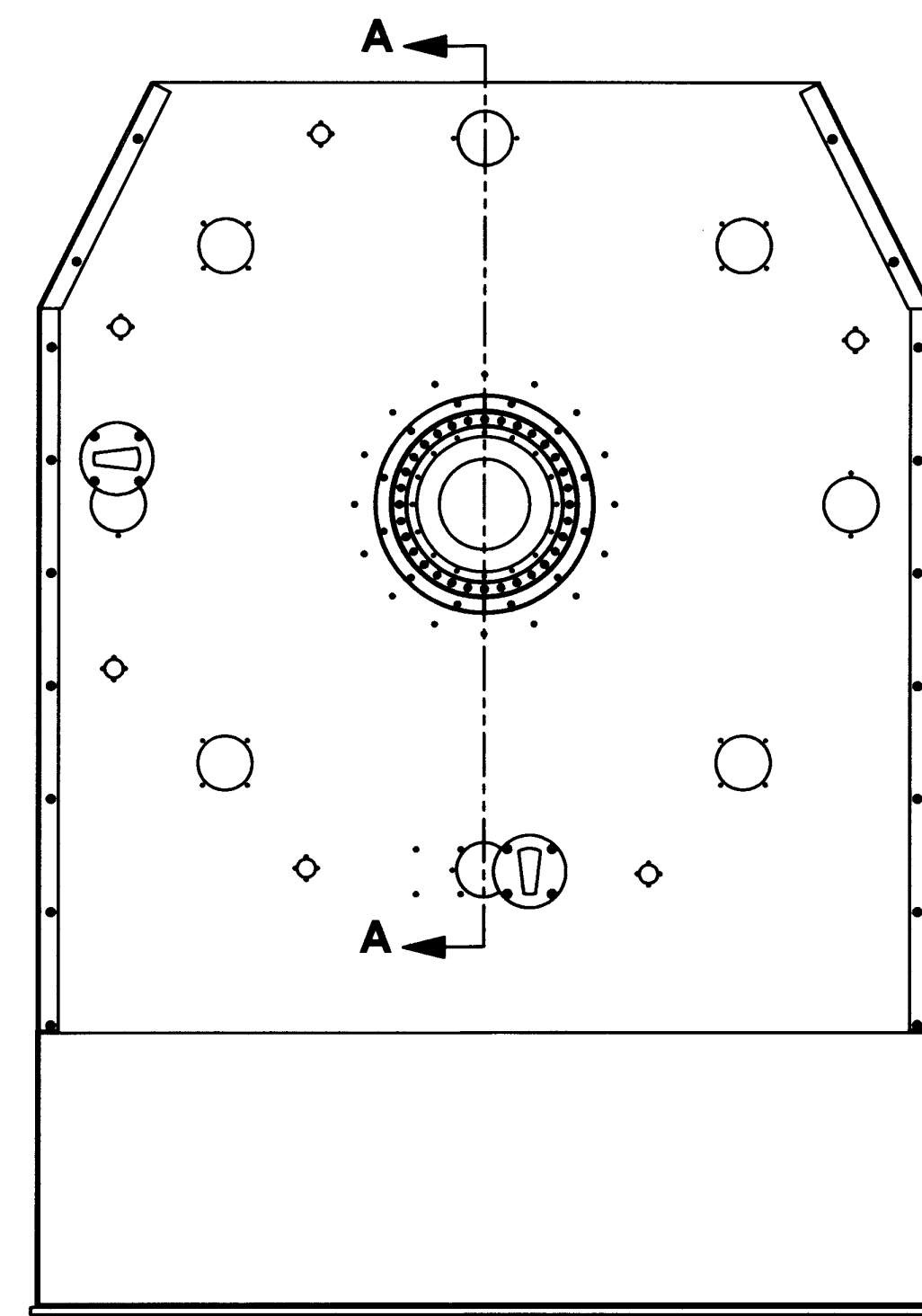
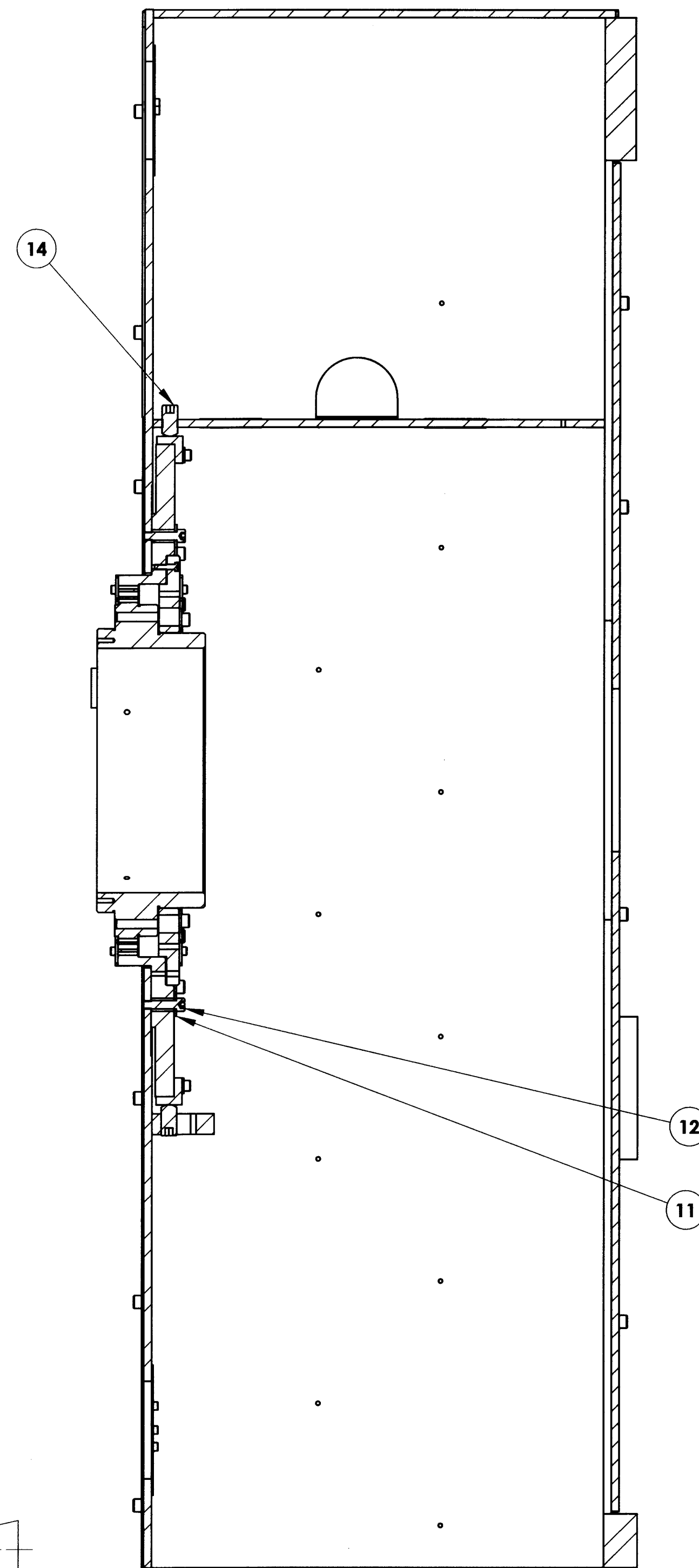
FINISH COLOR: PER COMPONENT

APPROXIMATE MASS: 1920132.14 gm

REFERENCE DOCUMENTS:

REV.	DATE	DESCRIPTION	CHK'D	APP'VD	ZONE
1	6/13/2005	INITIAL RELEASE	EJD	GJP	
2	6/19/2009	REVISE PER ECO 1460	ZBD	LN	

Controlled Document
Confirm revision before using



ITEM NO.	Default/QTY.	PART NUMBER	DESCRIPTION	Material	Weight
17	4	B18.3.1M - 6 x 1.0 x 16 Hex SHCS -- 16CHX			
16	12	B18.3.1M - 8 x 1.25 x 16 Hex SHCS -- 16NHX			
15	30	B18.3.1M - 10 x 1.5 x 16 Hex SHCS -- 16NHX			
14	4	SSOVALSKT 0.75-16x1.5-HX-N			
13	8	B18.3.1M - 10 x 1.5 x 30 Hex SHCS -- 30NHX			
12	16	B18.3.1M - 10 x 1.5 x 40 Hex SHCS -- 40NHX			
11	16	B18.22M - Plain washer, 10 mm, regular		ZINC PLATED ALLOY STEEL	0
10	24	B18.3.1M - 6 x 1.0 x 12 Hex SHCS -- 12CHX	M5-.8 X 16 METRIC SHC SCREW		
9	6	COM-7996	FORK TINE HOLE COVER SMALL	AISI 1020 14 GA. SHEET	56.52
8	8	COM-7995	FORK TINE HOLE COVER LARGE	AISI 1020 14 GA. SHEET	300.16
7	2	COM-7206	ELEVATION BUMP STOP POST	A-36 MILD STEEL	2920.30
6	1	COM-7235	TINE UPPER SKIN	A36 Structural Steel	99109.30
5	1	ASY-7238	RH TINE SKIN WELDMENT	PER COMPONENT	25874.44
4	1	COM-7236	TINE LOWER SKIN	A36 Structural Steel	31874.74
3	1	ASY-7232	LH TINE SKIN WELDMENT	PER COMPONENT	25873.48
2	1	ASY-5076	ELEVATION DRIVE BEARING ASSEMBLY	BY COMPONENT	126251.51
1	1	COM-5372	TINE STRUCTURE - MACHINED	PER COMPONENT	1600519,8113479 7

DO NOT SCALE DRAWING

SECTION A-A
SCALE 1:5

<p>COPYRIGHT</p> <p>THIS DOCUMENT & ENCLOSED PROPRIETARY INFORMATION REMAINS THE PROPERTY OF EOS TECHNOLOGIES, INC. THE INTELLECTUAL PROPERTY AND INFORMATION HEREIN MAY NOT BE COPIED NOR DISCLOSED WITHOUT WRITTEN CONSENT OF EOS TECHNOLOGIES, INC. MANAGEMENT</p>	<p>UNLESS OTHERWISE SPECIFIED: DIMENSIONS ARE IN MILLIMETERS X.X = ±0.25MM X.XX = ±0.10MM ANGLES = ±0.5°</p> <p>ROUNDS AND FILLETS ARE R3.0 BREAK ALL SHARP EDGES 0.25MM X 0.25MM</p>	<p>WELDS ARE: MAX SIZE FILLET OR FULL PENETRATION GROOVE WELD AS APPROPRIATE.</p> <p>ALL WELDS ARE CONTINUOUS</p> <p>NEAREST NOMINAL STOCK SIZE MAY BE SUBSTITUTED UPON APPROVAL.</p> <p>INDICATED MACHINED SURFACES ^{3.2}</p>	<p>DESIGN E. DALE DATE 5-5-05</p>	<p>EOS TECHNOLOGIES, INC. 3160 E. TRANSCON WAY, SUITE 180, TUCSON, AZ 85706 PH: (520) 624-6399</p>			
			<p>DRAWN K. WASMER DATE 5-16-05</p>	<p>LEFT FORK ASSEMBLY</p>			
<p>CHECKED E. DALE DATE 6-13-05</p>	<p>APPROVED G. J. PENTLAND DATE 6-13-05</p>			<p>DRAWING NO. ASY-7990</p>	<p>STATUS Released</p>	<p>REVISION REL-02</p>	<p>SHEET SIZE A1</p>
<p>SCALE 1:15</p>				<p>SHEET 1 OF 1</p>			

