

DRAWING NO. **ASY-8477** REVISION **REL-02**

PROJECT CODE: **LICK-51**

REQUIRED PER TELESCOPE: 1

MATERIAL: PER COMPONENT

CONDITION: PER COMPONENT

SURFACE FINISH: PER COMPONENT

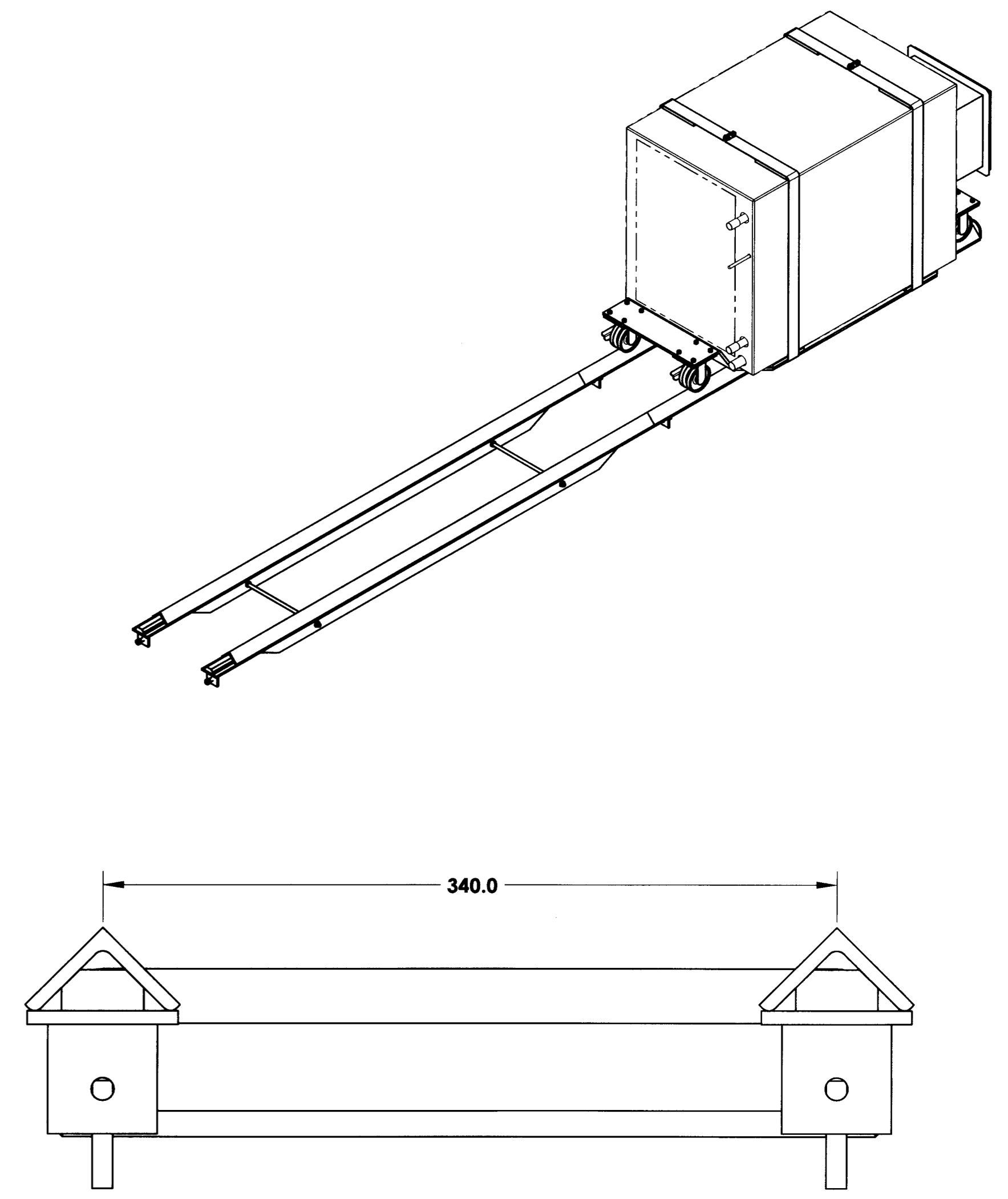
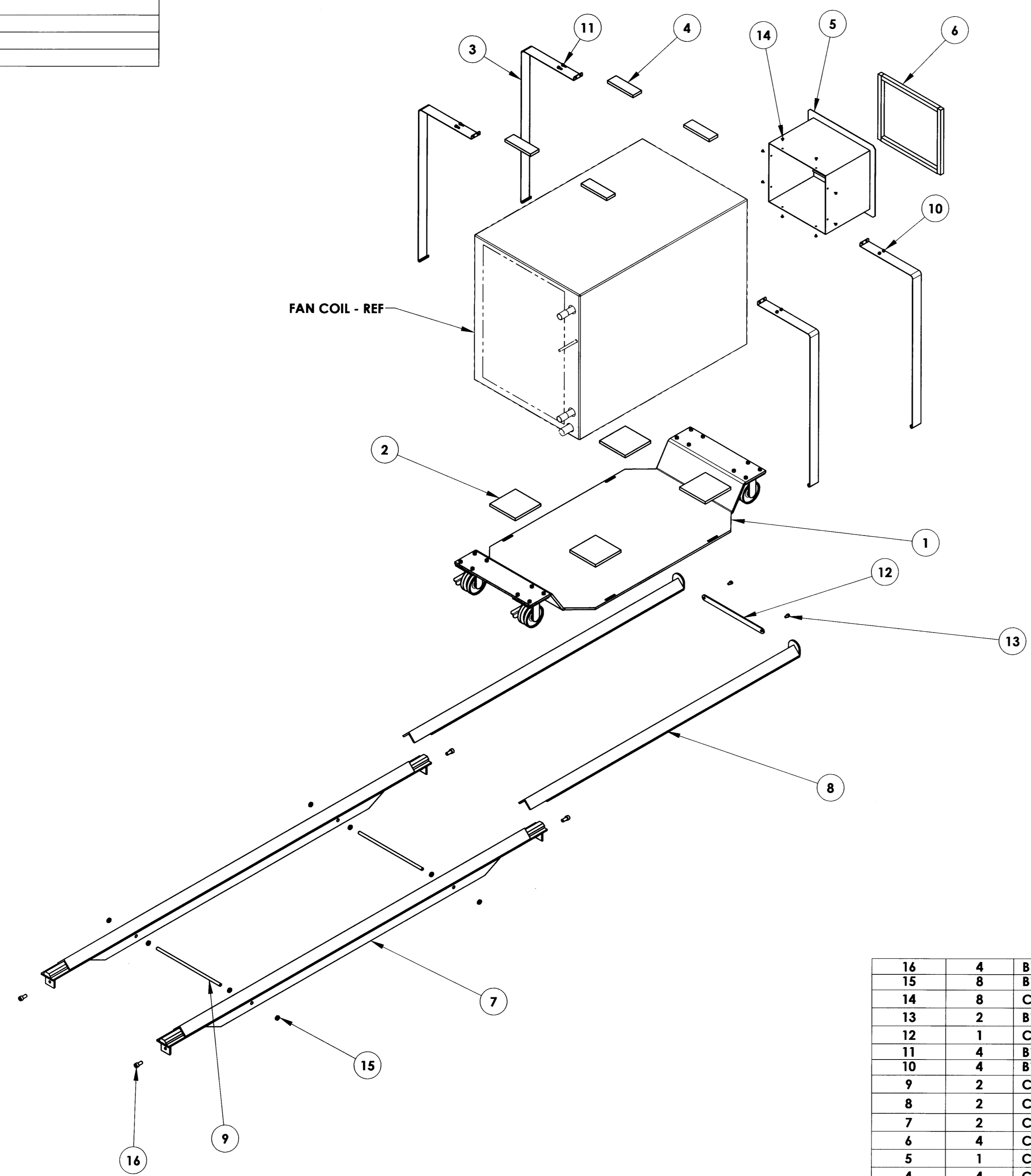
FINISH COLOR: PER COMPONENT

APPROXIMATE MASS: 145496.64 gm

REFERENCE DOCUMENTS:

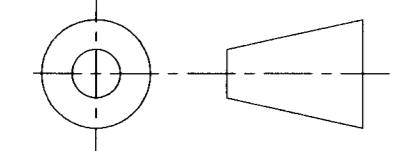
REV.	DATE	DESCRIPTION	CHKD	APPVD	ZONE
1	8/1/2005	INITIAL RELEASE	ETD	GJP	
2	9/2/2008	REVISE PER ECO-1178			

**Controlled Document**  
**Confirm revision before using**



**LICK**

ITEM NO.	Default/QTY.	PART NUMBER	DESCRIPTION	Material	Weight
16	4	B18.3.1M - 12 x 1.75 x 25 Hex SHCS -- 25NHX			
15	8	B18.2.4.5M - Hex jam nut, M12 x 1.75 --D-N			
14	8	CPP-9001	SCREW #8 X 3/8" LG. TR HD PH SHEET METAL	304 STAINLESS STEEL	1.24
13	2	B18.3.1M - 8 x 1.25 x 12 Hex SHCS -- 12NHX			
12	1	COM-9029	BASE RAIL BRACE	A36 Structural Steel	334.94
11	4	B18.3.1M - 6 x 1.0 x 16 Hex SHCS -- 16NHX			
10	4	B18.2.4.1M - Hex nut, Style 1, M6 x 1 --D-N			
9	2	COM-8593	BASE RAIL ROD	M12 X 1.75 THREADED ROD	334.41
8	2	COM-8479	BASE CART RAIL EXTENSION	A36 Structural Steel 2 X 2 X 1/4" ANG, 1/4" X 2-3/4" FLAT	12888.42
7	2	COM-8478	BASE CART RAIL	A36 Structural Steel	28815.55
6	4	COM-8997	DUCT GASKET	Rubber	121.57
5	1	COM-8973	AIR DUCT GRILL	A36 Structural Steel	5127.84
4	4	COM-8971	TOP LOAD PAD	NEOPRENE	98.32
3	4	COM-8970	FAN COIL STRAP	A36 Structural Steel 18 GA. SHEET	544.35
2	4	CPP-9002	PAD VIBRATION DAMPENING 1/2" THK	NEOPRENE	294.97
1	1	ASY-8475	FAN COIL CART ASSEMBLY	PER COMPONENT	76544.96



DO NOT SCALE DRAWING

**COPYRIGHT**

THIS DOCUMENT & ENCLOSED PROPRIETARY INFORMATION REMAINS THE PROPERTY OF EOS TECHNOLOGIES, INC. THE INTELLECTUAL PROPERTY AND INFORMATION HEREIN MAY NOT BE COPIED NOR DISCLOSED WITHOUT WRITTEN CONSENT OF EOS TECHNOLOGIES, INC. MANAGEMENT

**UNLESS OTHERWISE SPECIFIED:**

DIMENSIONS ARE IN MILLIMETERS  
 X.X = ±0.25MM  
 X.XX = ±0.10MM  
 ANGLES = ±0.5°  
 ROUNDS AND FILLETS ARE R3.0  
 BREAK ALL SHARP EDGES 0.25MM X 0.25MM

WELDS ARE: MAX SIZE FILLET OR FULL PENETRATION GROOVE WELD AS APPROPRIATE.  
 ALL WELDS ARE CONTINUOUS  
 NEAREST NOMINAL STOCK SIZE MAY BE SUBSTITUTED UPON APPROVAL.  
 INDICATED MACHINED SURFACES

DESIGN	DATE
K. WASMER	6-22-05
DRAWN	DATE
K. WASMER	6-22-05
CHECKED	DATE
E. DALE	8/1/05
APPROVED	DATE
G. PENTLAND	8/2/05

**EOS TECHNOLOGIES, INC.**  
 3160 E. TRANSCON WAY, SUITE 180, TUCSON, AZ 85706 PH: (520) 624-6399

**BASE RAIL ASSEMBLY**

DRAWING NO. **ASY-8477** STATUS **Released** REVISION **REL-02** SHEET SIZE **A1**

SHEET 1 OF 1 SCALE 1:12